



POTRERO GATEWAY PARK THE LOOP

PREPARED FOR
SAN FRANCISCO
PUBLIC WORKS

AUGUST 1, 2017

bionic
Planning
Landscape Architecture
Urban Design

endresstudio
ARCHITECTURE ENGINEERING

FUTURE CITIES LAB

Lotus Water
engineering solutions for a better environment

chs Consulting Group

CHARLES M. SALTER ASSOCIATES INC.
ACOUSTICS • AUDIOVISUAL • TELECOMMUNICATIONS • SECURITY

INTEGRAL
GROUP

RMA
RUSSELL D. MITCHELL
& ASSOCIATES, INC.

Oppenheim | Lewis

HELENE FRIED

K

HLB

NJM Management Group
Turning Public Space
into Community Value

JIM CAMPBELL

Table of Contents

1. Introduction & Executive Summary
2. Project Approach
3. Firm Qualifications
4. Team Qualifications
5. References

INTRODUCTION & EXECUTIVE SUMMARY





1. INTRODUCTION & EXECUTIVE SUMMARY

San Francisco Public Works
Contract Administration Division
Attn: Tiffany Dea
1155 Market Street, 4th Floor
San Francisco, Ca 94103

Dear Selection Committee for The Loop / Potrero Gateway Park,

We are writing with great interest in working with SF Public Works and The Loop Steering Committee as the landscape architectural consultant for The Loop / Potrero Gateway Park. As landscape architects, our work spans a wide variety of scales and project types. **While our portfolio is diverse, our projects enable life and stimulate culture in this increasingly complex world.** Our extensive experience with public parks, streetscapes, art installations, commercial projects, landscapes on structure, gardens, infrastructure, and creative programming are highly relevant to this project. They demonstrate our technical ability, attention to detail, cost controls, and collaboration. And they embody our core belief that invention can convert constraints and challenges into inspiring places with civic and social value, economic vitality, and enable life for profound lasting purpose.

Bionic is a certified San Francisco LBE and Micro-LBE with strong local and international experience. Our team is uniquely qualified for this project in every way.

Since 2012, **Bionic has lead the design of The Loop Master Plan** with the Steering Committee. Bionic was involved in all aspects of the project. Bionic attended all project-related and stakeholder meetings, led community workshops, gathered stakeholder input, and hosted focus group sessions to design key elements. In addition, our firm developed the marketing and branding vision for the project, supported on-going fundraising efforts, directed and produced a promotional video, and coordinated with all agencies having jurisdiction. **We are deeply knowledgeable about the project and its stakeholders, and will bring insights for a streamlined process to best utilize time and resources.**

We have a talented team to execute this project. All Bionic team members are current employees of Bionic. We have repeat experience delivering projects on time and on budget. **Marcel Wilson** is the design director and leads our firm's design efforts. Marcel's background with northwest Potrero and Dogpatch will offer the project stakeholder familiarity and extensive urban design knowledge and experience. **Scott Smith** is our technical director. Scott is a talented designer and a LEED-accredited landscape architect with 28 years of experience designing and documenting built projects. Scott is an expert in construction systems, and has unique specialization in building landscapes to budget. Additionally, he is certified by the Construction Specifications Institute as a Construction Contract Administrator.

Sarah Moos Thompson will be our project manager. She has been the Project Manager for The Loop since 2012. Sarah brings repeat experience managing large project teams, entitling public and private projects, and communicating complex landscape and urban design concepts to clients, communities, and agencies. She has a unique knowledge of San Francisco's eastern neighborhoods from her role as project manager for the Blue Greenway Brownfields Area Wide Plan and India Basin Development. Her graduate work and SPUR Piero N. Parti Fellowship focused on transforming remnant urban spaces similar to the Loop through urban ecology and public space activation. **Peter Frankel** will be the Project Landscape Architect and Streetscape Expert. Peter brings a distinct expertise in the design and construction of streetscapes and shared streets in the Bay Area. He led the design and coordination with the SF Public Works ADA Coordinator for the India Basin Development,

and 3rd Street Flashlight in Dogpatch. **Karthik Kumar** will be the Project Architect and Delivery Lead. Karthik has led the technical execution of Eagle Plaza, a public plaza and shared street in San Francisco with numerous site constraints. He is well versed in the requirements of city agencies and newly released asset protection standards.

We recognize the project's specific and technical needs, and have compiled an exceptional team for Phase 1 comprised of **internationally recognized design and technical experts** ready to take on this project. We have **collaborated before**, we are **San Francisco based firms**, we have repeat experience working with Caltrans and the City of San Francisco, and many of our team members are **located in Potrero Hill**. **EndreStudio** joins as the architect and structural engineer with expertise in distinctive structures within the public realm. **Future Cities Lab** joins as the expert in experiential design and has been recognized for their interactive installations. And **HLB** is internationally known for their lighting design.



Lightswarm // Future Cities Lab



Dogpatch Public Realm // CHS



Baker Beach Green Street // LotusWater

Our team also includes support resources for programs and operations & maintenance. **Lotus Water** joins as the civil engineer with creative expertise in stormwater management in San Francisco. **CHS Consulting** joins as the traffic engineer. CHS has repeat experience working with Caltrans and freeway off-ramps in San Francisco. **Charles M. Salter Associates** brings expertise in acoustical engineering and project examples of vertical gardens as soundwalls. **Integral Group** joins as the electrical engineer. They have worked closely with HLB to deliver projects similar in size and scope. **RMA** brings expertise in irrigation design and engineering. They have extensive experience with Caltrans projects and are familiar with Caltrans codes and requirements. **Oppenheim Lewis** joins as the cost estimator with repeat experience estimating projects with overlapping jurisdictions, many phases, and multiple funding sources. And **MJM** joins the team to advise on operations and maintenance, and property management. MJM is also experienced in preparation of Pro Formas to identify income and revenue generation for proposed developments of all scales.

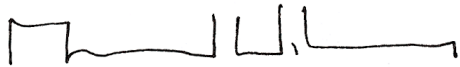
Our team also includes distinct advisors in public art and environmental graphics. **Helene Fried** joins the team as the curator and advisor in public art. Helene has over 3 decades of experience in public art curation and art programming for public spaces throughout San Francisco. **Keilani Tom Design Associates (KTDA)** will advise on environmental graphics for signage, wayfinding, and interpretive signage. KTDA developed the Hunters Point Shipyard Signage and Art Master Plan in collaboration with Helene Fried, as well as the Embarcadero streetscape and public realm signage program. And **Jim Campbell**, a light-based artist working out of his Potrero Hill studio, joins as artist and advisor for public art installations involving light and multi-media.

From our combined project experience, our team is **very familiar with the neighborhood and relevant regulatory agencies**. At India Basin in San Francisco, Bionic has **worked closely for the last 4 years with the PW ADA Coordinator** on the design of a progressive public realm integrating pedestrians, Class 1 bikeways, shared streets, fire lanes, retail, art, stormwater management, and ecology. CHS Consulting is working collaboratively with the MTA on numerous streetscape improvement and traffic calming projects

including the Waterfront/Dogpatch Public Realm Plan, 19th Avenue streetscape enhancement plan, and Lombard Street traffic management plan. Their proposal for the Transbay Transit Center Streetscape at the Fremont Street freeway off-ramp resulted in **millions of dollars saved to the project and an enhanced streetscape experience**. Lotus Water's portfolio includes over a decade of streetscape improvement projects for the SFPUC to **manage stormwater through inventive design strategies and often in tight urban conditions**. We have repeat experience working with Caltrans and the design, permitting, and construction of projects within the Caltrans right-of-way.

We hope the enclosed proposal give you a sense of our past collaborations, capacity, creative talents, and experience that we bring to projects. Please let us know if we can provide any additional information. We look forward to the possibility of working with SF Public Works and Steering Committee on Phase 1 of The Loop / Potrero Gateway Park.

Best Regards,



Marcel Wilson, ASLA, Founding Principal
mwilson@bioniclandscape.com

415.206.0648
833 Market Street, Suite 601
San Francisco, CA, 94103

Cover Images (from top) //

3rd Street Flashflight Park, Dogpatch / San Francisco

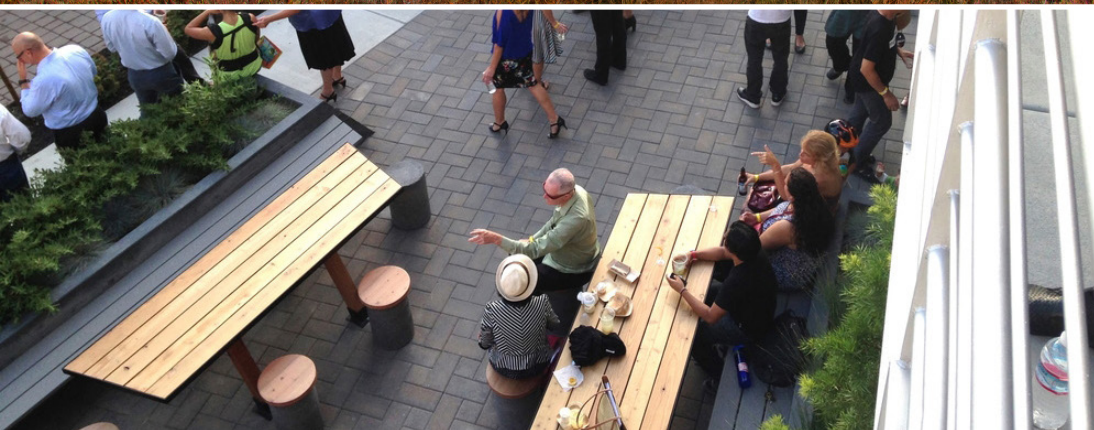
Solar Terrain, Museum of Craft & Design / San Francisco

LinkedIn Public Realm, Fence & Shared Way / Mountain View

Markings Freeway Art Installation / San Jose

Tech Deck / Mountain View

Illuminated Stormwater Pond & Shared Public Way / Mountain View



PROJECT APPROACH

2. PROJECT APPROACH

The Loop is an ambitious and timely project! The neighborhood is rapidly developing. It is located at a major entry to the city. And it has a motivated and organized community. Everyone knows that The Loop can be great! A destination open space that is fun, vibrant, and active. A high-tech public art exhibition of signature pieces unlike anything in San Francisco. And a **new model for public open space and progressive streetscapes**.

But like other freeway open space projects, there are a plethora of challenges to overcome to realize the Loop. The site is complex. The safety and security issues are a significant challenge. Unique conditions will require inventive environmental mitigation solutions. There are multiple agencies with overlapping jurisdiction and competing interests. And the Client has limited financial resources to realize the built project. **Our firm has a unique ability to resolve this complexity through design and invention.** Our portfolio demonstrates this ability with open space and streetscape projects, as well as a wide variety of other project types. While projects of similar size and scale are relevant, we will draw on our expertise from our full portfolio to realize the full potential of this project.

Our firm led the design of The Loop Master Plan and we were involved in all aspects of the project. From this leadership, we are deeply familiar with the stakeholders. We understand the physical and technical complexities, permitting nuances, design guidelines, and code compliance required. We **recognize the project's potential and we know how to lead it forward to success.**



Loop Steering Committee + Bionic // San Francisco City Hall



The Loop // 17th & San Bruno / rendering by Bionic, 2014

COMPREHENSIVE TEAM

To successfully implement the vision and realize The Loop Phase 1, we have organized a comprehensive team of **internationally-recognized designers and engineers** with the technical expertise specific to this project. Many of them are based in Potrero Hill. They will bring **fresh eyes and ideas to the project.** And they will add vision and expertise to the work already completed. They are excited about the project. They all recognize its potential.

DUE DILIGENCE & RISK ASSESSMENT

We believe it is important to set the project on a trajectory for success. This involves early due diligence and risk assessment. Gathering relevant base information and resources. Establishing a baseline from which the project will be designed. And reevaluating current assumptions early in the design process. From our previous experience on the project, we know what data and resources are needed and when. We offer a **tremendous value add and assistance to the Public Works staff** to navigate complex issues early and move this project forward through an efficient process.

REFRESHING THE VISION

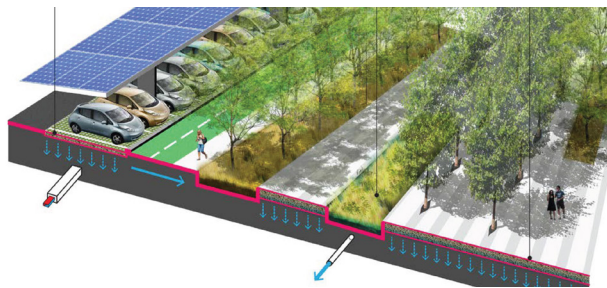
We also recognize that **since the completion of the Master Plan, the project has evolved.** There is feedback and direction from agencies. There is new data and technical resources. There are new opportunities and new ideas from the community. We understand that the Gateway Art Program is core to the project now. Our team includes specialists in experiential design, public art curation, and light art installations. We will work closely with the Steering Committee and community to devise a platform that sets the stage for a **lasting and iconic public art collection.**

Our team is comprehensive and has the design and technical capacity to refresh the vision. From our repeat experience with parks, streetscapes, and installations, we understand the most important step in developing a compelling design vision is to **embrace key stakeholder input** and **work collaboratively with public agencies** to incorporate code considerations early in the design process.

INNOVATIVE WAYS TO ACHIEVE CUTTING EDGE RESULTS

Visualization is key to the successful communication of urban design proposals and Bionic brings expert capacity to create clear and inspiring images and documents for The Loop. We will use this capacity to develop the project in 3D from a very early stage to model the subsurface and overhead conditions, and communicate how they influence the look and feel of the park. We also have the flexibility to craft renderings and other visualization tools in many different media to **speak simply to varied audiences**. Bionic employs the full range of techniques, from hand drawing and physical modeling to state of the art 3D digital modeling and rendering software in creating project visualizations that allow for quick study and clear communication of design ideas.

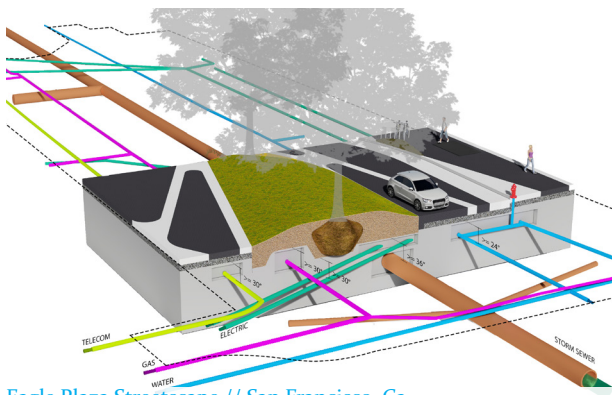
It is our team's capacity to **create inspiring concepts + strategies** that articulate complex issues and resolve competing interests, generate excitement and sustained enthusiasm, and build a broad base of support for implementation. Our approach to The Loop is to embrace the social and technical complexity of the project and to use our unique design ability and resources to reach the full ambitions of the project.



Streetscape Visualization // Sunnyvale, Ca



India Basin Vision Plan Public Meeting // San Francisco, Ca



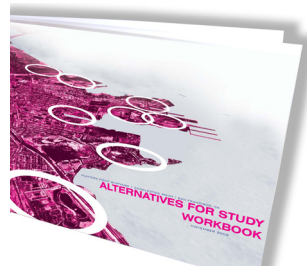
Eagle Plaza Streetscape // San Francisco, Ca



1532 Harrison Rendering // San Francisco, Ca



Hunters Point Shipyard Communications // San Francisco, Ca
Study



Comment workbook



Survey

SCOPE OF WORK

The following is an outline of our recommended overall scope of work including proposed tasks, services, and activities. It is designed to be efficient yet thorough. Our clients are valuable collaborators, and we will make it our first priority to review the scope, schedule of meetings per phase, approvals process, and allocation of resources with them to refine and optimize the plan and priorities.

PROJECT MANAGEMENT & QUALITY ASSURANCE

Bionic is committed to providing clients with quality work. We implement a quality management system based on the International Standard for Quality Assurance ISO 9001 to assure coordination between the disciplines regarding allied issues for completeness and conciseness. We believe in and practice the following: clearly define client needs, excellence in design, collective commitment by all staff, pro-active and preventative methods, continuous improvement, a client focus consistent with professional standards and ethics, innovative and collaborative approaches, maintaining superior resources and dedicated staff. A dedicated Quality Coordinator is authorized to ensure that the requirements of the Quality Assurance System procedures are adapted to the specifics of each project and implemented. Bionic will lead the design of the site and the team, be the liaison to Public Works, lead design team meetings, prepare meeting minutes, manage the master project schedule, and confirm the design conforms to appropriate and applicable Public Works & Caltrans Standards & Guidelines.

TASK 1: CONCEPT DESIGN - 17th Street / San Bruno Avenue / Vermont Streets

In this task, we will explore the issues, reevaluate current assumptions and the master plan, and layer program, systems, and code compliance to develop the preferred concept design through the following design process:

1. Start-Up
 - Attend (1) kick-off meeting/site visit for a project introduction to subconsultants, and to review and confirm schedule, project goals and elements list, data request, stakeholder roster, and client direction.
 - Review new project documents provided by Public Works / Steering Committee and update base drawings with new project survey provided by Public Works.
 - Develop refined list of program and project elements.
 - Initiate Traffic Analysis.
 - Prepare an Opportunities and Constraints Memo.
2. Using the background information, constraints, opportunities, our impressions, and experience, we will explore what is possible through drawings that conceptually illustrate the refined design of program elements which may include:

• ADA Accessible Circulation and Paths of Travel	• Bicycle Lanes
• Art Program & Flexible Platform	• Sidewalks & Bulb-outs
• Landscape Structures	• Curb-cuts & Crosswalks
• Lighting	• Parking & Striping
• Small-Business District	• Fencing & Paint
• Experiential Elements	• Signage & Wayfinding
• Living Screen	• Stormwater Treatment Areas
• Seating Areas & Furnishings	• Tree and Understory Plantings
3. In collaboration with the Steering Committee, develop a proposal for the Gateway Art Program flexible platform.
4. Develop and submit the preferred Concept Design Package (Community Meeting #1 Presentation)
5. Meet with respective public agencies to review the Preferred Concept Design and to determine the preferred permitting roadmap.

TASK 2: SCHEMATIC DESIGN (SD)

Based on the approved Concept Design and budget, we will develop the Site Design and presentation that details the landscape and functional areas at an SD level to serve as the Basis of Design Document and Community Meeting #2 presentation through the following:

1. Prepare drawings conceptually illustrating refined designs of program elements for the Phase 1 area.
2. Prepare and submit (1) Schematic Design package for the Phase 1 area at 50% and 100%.
3. Conduct a Code Compliance Review.
4. Prepare 100% Schematic Design cost estimate.

TASK 3: DESIGN DEVELOPMENT (DD)

Based on the approved Schematic Design and budget, we will develop the Site Design and presentation that details the landscape and functional areas in a DD level drawing package, organized to maximize efficiencies in preparing multi-jurisdictional permit packages, through the following:

1. Prepare and submit (1) Design Development Package at 50% and 100% for the Phase 1 area.
2. Prepare and submit 3-part draft Specifications as part of 100% DD Package.
3. Prepare Draft Stormwater Control Plan (SCP).
4. Prepare 100% Design Development cost estimate.
5. Provide design drawing package for CEQA environmental review, led by Public Works.
6. Prepare (1) permit application package based on the 100% DD Package to support Public Works in securing regulatory approvals for Authorities Having Jurisdiction AHJs. (To be confirmed with respective public agencies)

TASK 4: CONSTRUCTION DOCUMENTS

Based on the approved Design Development package, budget, and comments, we will develop the Sitework Construction Contract work requirements for contractor bidding and construction through the following:

1. Prepare and submit (1) CD package including 3-part Specifications at 60% CD, 90% CD, and 100% CD completion for Phase 1 area.
2. Prepare Final Stormwater Control Plan (SCP).
3. Prepare Cost Estimates at 60% and 90% Construction Document milestones.
4. Support PWD in submittal of General Plan Referral request at 60% Construction Documents.

TASK 5: BID AND AWARD OF CONSTRUCTION CONTRACT

Bionic will provide Bid support to Public Works for award of the construction contract through the following:

1. Provide (1) CD drawing package prepared as part of the process for Bid Documents.
2. Respond to one round of compiled Bidder questions and Requests for Information (RFIs).
3. Attend one Pre-Bid Conference.

TASK 6: CONSTRUCTION & CLOSEOUT

During construction, the team will provide the following general office and field support services to be confirmed at the end of the DD phase.

1. Field visits and memoranda describing findings.
2. Responses to General Contractor questions, day-to-day construction related issues, RFI responses, and review of submittals, substitution requests, and change orders.
3. Review one set of close-out documents and warranties provided by Contractor.
4. Participate in one site visit at Substantial Completion and one site visit to confirm completion of initial punch list and assist the Contractor with a back-punch list.

SUPPORT SERVICES

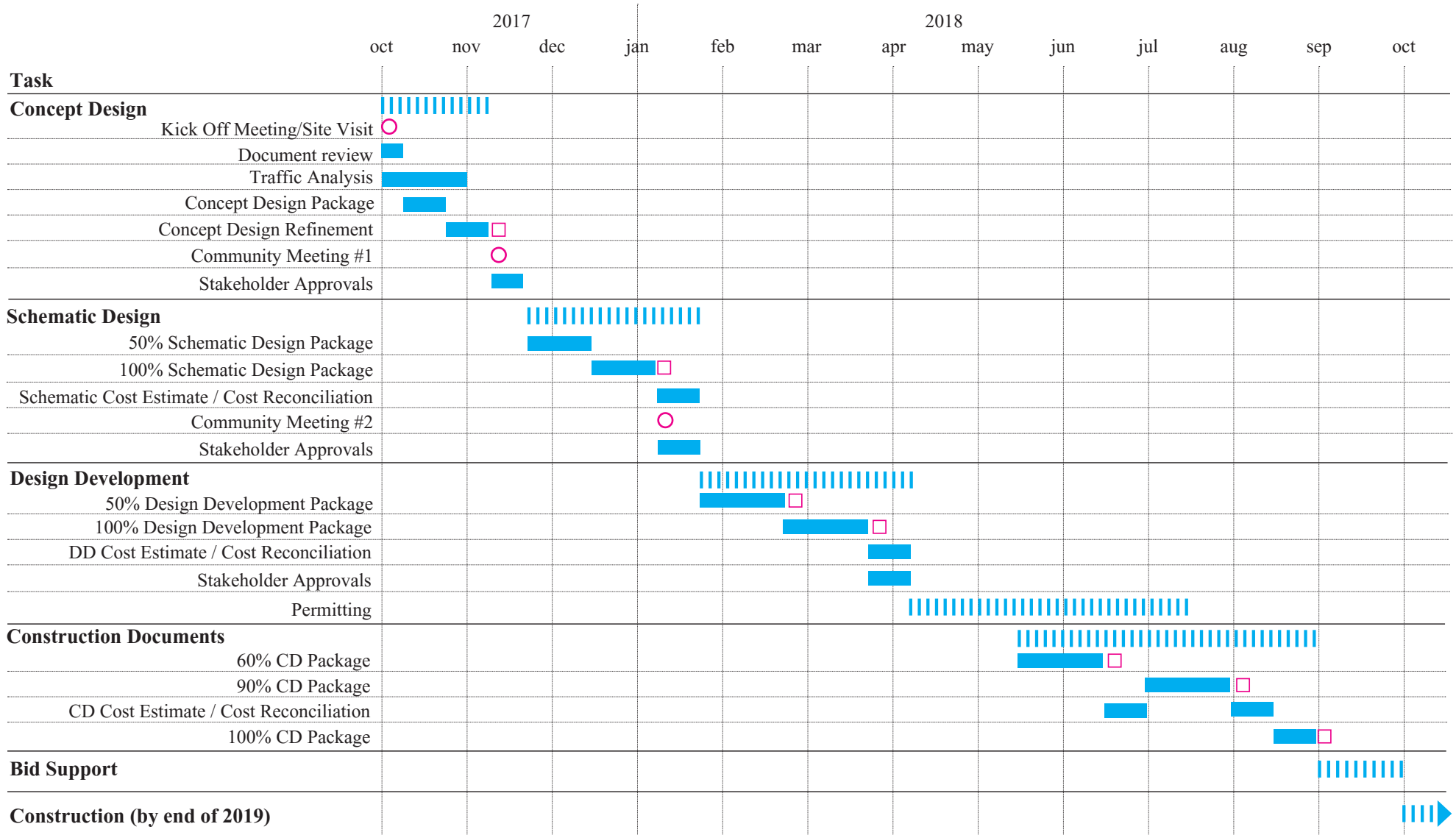
If the process calls for tasks not outlined in this scope of work, they can be added as an additional service. Our team includes some but not all of the additional services that our team has expertise to provide:

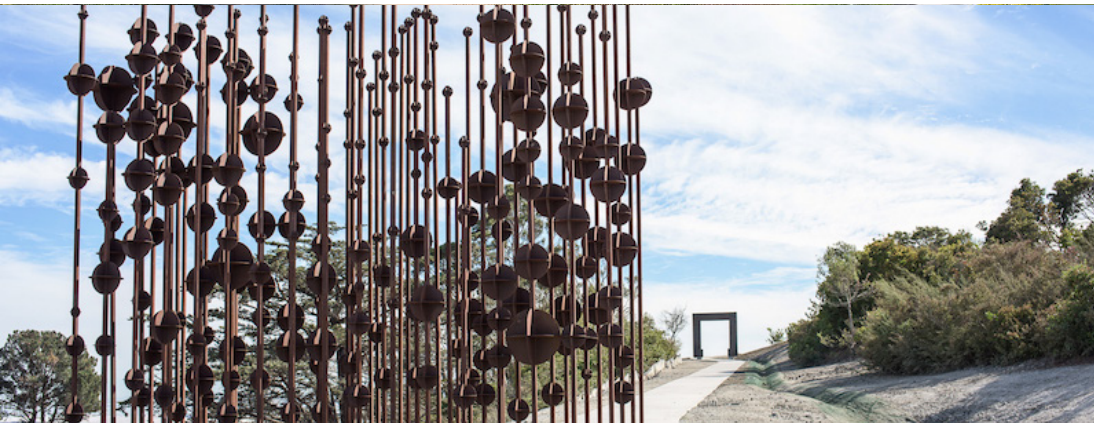
- Property Management Plan for the 17th
- Street Small-Business District.
- Pro Forma for the 17th Street Small-Business District.
- Preliminary Operations & Maintenance Plan for the Park.
- Attendance at Planning Commission Public Hearings or City
- Council Meetings.
- SFPUC Maintenance Agreement support.
- Maintenance period site visits.
- Additional Cost Estimates.
- Support to Public Works in the selection of a geotechnical consultant to prepare Geotechnical Report and manage any existing contaminated soils.
- Bid Document Packages not outlined in the scope. Additional Permit Support.
- Design and documentation of areas outside of 17th Street Corridor Limit of Work after concept phase.
- Marketing & Branding.
- Interpretive & Wayfinding Signage.
- Evaluate as-built documents for conformance with CD set.

THE LOOP SCHEDULE

We envision a collaborative and directed process to develop the design and construct Phase 1. Our team is prepared and able to commence work immediately and construct Phase 1 within the allocated time frame. We will make it our first priority to review the scope, schedule of meetings per phase, approvals process, and allocation of resources with them to refine and optimize the plan and priorities. This schedule is an approximate timeline for the outline scope of work included.

- Notes
- = deliverable
 - = meeting
 - ||||| = task duration
 - = subtask duration





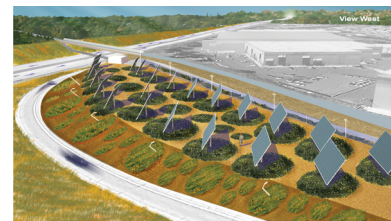
FIRM QUALIFICATIONS

3. FIRM QUALIFICATIONS

Bionic is a landscape architecture, urban design, and planning practice based in San Francisco, California. We are an established firm with mega project experience. The firm's mandate is simply to enable life. We combine and negotiate the relationship between things that are alive and things that are made. We excel at resolving the complexity of landscape, infrastructure, technology, architecture, transportation, ecology, politics, economics, and social factors. We employ a highly creative and collaborative approach to projects, and strive to invent contemporary forms of landscapes, systems, and urban places that support life. The creative and technical capability of Bionic is reflected in a wide-ranging portfolio that includes new urban developments, campuses, plazas, parks, waterfronts, housing, habitat restoration, industrial facilities, mixed use developments, art installations, and inventive urban spaces. Bionic is structured to design for excellence and to budget, to be extremely responsive and attentive to our clients, and to be excellent collaborators. Our firm directors have over 50 years of combined experience in design, construction, and management guiding complex projects through design processes in large organizations and the public. Our team is international, highly creative, professionally licensed, and uniquely skilled with expertise in landscape architecture, architecture, planning, urban design, and advanced computation.

EXPERIENCE WITH CALTRANS & CITY AGENCIES

We have repeat experience working with Caltrans and City agencies throughout the development process, and are very familiar with their varied procedures and permitting processes. We have lead projects adjacent to and surrounding freeways, and understand the safety and access requirements. In Sacramento, Bionic was commissioned to design a solar array for the Sacramento Municipal Utilities District. Bionic correlated the space and technical requirements of the solar units with the habitat and nesting requirements of the California Quail. The resulting site plan created optimized conditions for resident quail habitat and secure high performance local power generation. Bionic recently developed the design and documentation for multiple streetscape improvement projects and shared streets in San Francisco, including India Basin and Eagle Plaza. We collaborated extensively with the SF Public Works ADA Coordinator, the SF Planning Department, and SFPUC on these projects, and are well versed in the requirements of city agencies and newly released asset protection standards.



Solar Highways // Sacramento



Eagle Plaza // San Francisco



The Loop Public Meeting



The Loop Promotional Video

EXPERIENCE WITH COMMUNITY INPUT PROCESS

In addition to our primary role of providing design vision and technical expertise, we play two other essential roles in the consensus building process: facilitator and educator. As facilitators we develop a framework for productive dialogue. As educators we provide participants with an understanding of the design process and inform them of the breadth and complexity of project issues and concerns. We hold the belief that an open and inclusive community involvement process will inform the best plan for The Loop. We have extensive experience working with the stakeholders of The Loop already, and will continue to provide design leadership and communication through a range of engagement tools.

EXPERIENCE WITH PUBLIC ART

Bionic's portfolio includes expertise in public art installations. Markings was commissioned by the San Francisco Museum of Modern Art Revelatory Landscapes Exhibition. Situated under a freeway, the installation invited the public to experience the modern conditions of the site through simple, primitive, yet powerful means. The 24 pylons that supported the road deck above were coated with reflective silver paint. A scheme of Native American and English words was applied to the columns. Between the pylons a 500 foot long earthwork provided a view of the word scheme at eye level, and a view of the urbanized Guadalupe river at the end.



Markings // Caltrans, San Jose



INDIA BASIN WATERFRONT

San Francisco, CA

CLIENT	Build Inc.
SIZE	27 acres
BUDGET	Confidential
CREDITS	SOM Architects
REFERENCE	Michael Yarne, Partner Build Inc. 415.551.7612 michael@buildinc.biz
TEAM	Marcel Wilson, Design Director Scott Smith, Technical Director Sarah Moos Thompson, Project Manager Peter Frankel, Streetscape Expert/PLA
SCHEDULE	2014-2017 (Master Plan, Design Guidelines, and entitlements)

India Basin is a post industrial waterfront in a high tech city. Bionic is the lead landscape architect for its transformation from a feral and forgotten place to a new expansion of the city enabled with a super-natural landscape designed for the future. A new compact urban village hosts a 13-acre waterfront public park, residential, commercial, and institutional uses, and a complete neighborhood of services. A system of pond and wetland infrastructure aerates 100% of the site's stormwater and blackwater for re-use in the park and habitats. Excess water is sold to adjacent properties for district-scale sustainability. A micro-grid and extensive rooftop solar array creates independence from the city grid. The shoreline is designed to adapt over time to sea level rise through living shorelines. Elements including eel grass restoration, floating wetlands, terraced wetlands, and a bioengineered reef provide shoreline protection, wave attenuation, habitat creation, and upland habitat migration for a resilient Bay edge.



CLIENT	LinkedIn
SIZE	24 acres
BUDGET	\$26 million
CREDITS	Sera Architects
REFERENCE	Suzanne Blair, Associate Principal Sera Architects 503.445.7306 suzanneb@seradesign.com
TEAM	Marcel Wilson, Design Director Scott Smith, Technical Director Peter Frankel, PLA Sarah Moos Thompson, Master Plan Specialist
SCHEDULE	2015-2017 (Design & Construction)

Formerly a place for cars only, LinkedIn Middlefield transformed a roadway and parking lot by carefully weaving people and ecology for a distinct and varied user experience. Many of the existing mature trees were retained and incorporated into the new landscape, providing valuable shade and structure for the space. A boardwalk was designed to merge pedestrians, bikes, and fire lanes in a tight but coherent public realm.

At the heart of the campus, a playful boardwalk floats above a 35,000 SF meadow, built atop a former parking lot. The meadow provides site-scale ecological infrastructure via three bioretention cells that collect and treat all of the site's stormwater. The planting here and throughout the site provides rich, dynamic habitat for birds and pollinators as well as seasonal interest for human inhabitants.

An illuminated custom designed fence serves as an accent and divider between active and passive programmed spaces. A sound wall designed to block noise from the adjacent freeway creates a peaceful garden space for contemplation. The robust water system captures rainwater from the buildings to feed bird habitat and irrigate the site.





GATEWAY CENTER ISLANDS

Pittsburgh, PA

CLIENT	Western Pennsylvania Conservancy
SIZE	4.5 acres
BUDGET	Confidential
REFERENCE	Judy Wagner, Senior Director Western Pennsylvania Conservancy 412.586.2390 judywagner@paconserve.org
TEAM	Marcel Wilson, Design Director Chris Rousseau, Project Manager Sarah Moos Thompson, Designer
SCHEDULE	2010-2014 (Competition, Master Plan, Schematic Design)

The Gateway Center and Liberty Avenue streetscape improvements promised a modern, welcoming entry to the city and a destination for residents and visitors alike. After nearly six decades, deferred maintenance and neglect have left the streetscape and leftover pieces in need of complete renovation.

After winning a national design competition, Bionic was commissioned to redesign this iconic entry to the city, which links the Fort Pitt Bridge to the heart of the cultural district as well as Point State Park. Bionic's design extends the dramatic geometries of crossing the bridge and incorporates stormwater elements into the streetscape, accommodating new bicycle lanes, treating stormwater through bioswales, and adding nighttime lighting that will enrich and enhance the space for evening use while respecting the night sky. Rich textures in the planting palette and varied tree species assure visual interest throughout the seasons. A vibrant public art walk runs the length of the project and is elevated from the street for safe, accessible, and immersive art experience.



EndreStudio



PUC Building, with artist Ned Kahn; San Francisco, CA (2011)

CLIENT: SFPUC

PROJECT BUDGET: Not disclosed

To support a tower of sculptural wind turbines for Ned Kahn's artist commission for the new PUC building in San Francisco, EndreStudio provided a full integration of architecture and structure.



Klyde Warren Park; Dallas (2013)

CLIENT: Woodall Rodgers Park Foundation

PROJECT BUDGET: Not disclosed

Klyde Warren Park is a 5-acre public park built over the Woodall Rodgers freeway in the burgeoning Arts District in Dallas.



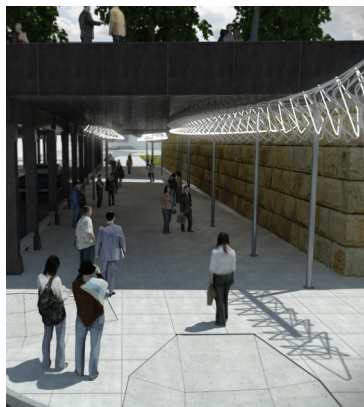
Portland Art Museum, with Andrea Cochran; Portland, OR (2013)

CLIENT: Portland Art Museum

PROJECT BUDGET: Not disclosed

This structural steel design for the public infrastructure of the Portland Art Museum included, movable steel display platforms for sculptures, pigmented concrete walks, and sculptural structural elements.

Future Cities Lab



Lightweave interactive light sculpture; Washington, DC (2017)

CLIENT: NoMA Benefits District

PROJECT BUDGET: \$500,000

Lightweave translates ambient urban sounds into dynamic patterns of light triggered by the noise and vibration of passing trains, cars and sounds of the neighborhood. The interactive light sculpture animates the Amtrak rail underpass.



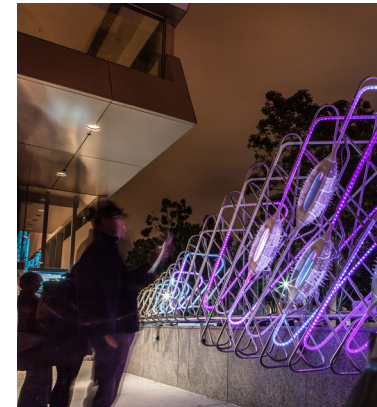
Anemone Canopy public sculpture; Albany, CA (2017)

CLIENT: The City of Albany,

Oppidan Development

PROJECT BUDGET: \$200,000

The Anemone Canopy, creates an immersive pedestrian experience that transforms the everyday into something unexpected, inspiring and contemplative



Murmur Wall interactive light installation; San Francisco, CA (2014)

CLIENT: YBCA

PROJECT BUDGET: \$300,000

Murmur Wall is an artificially intelligent art installation that reveals what the city is whispering, thinking and feeling by harvesting local online activity.

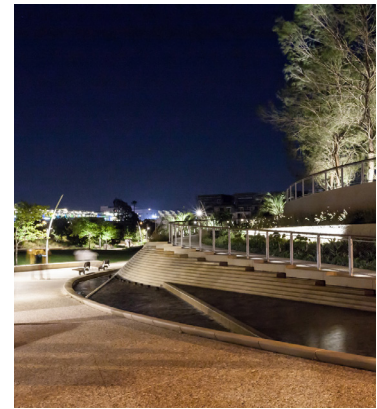
HLB Lighting



Mission Creek Sports Park; San Francisco, CA (2005)
 CLIENT: Mission Bay Dev. Group
 PROJECT BUDGET: \$18.5M
 Through custom lighting design, HLB helped transform this once industrial area into a thriving mixed-use urban landscape.



The Miami Underline; Miami, FL (ongoing)
 CLIENT: Friends of the Underline
 PROJECT BUDGET: \$120M
 HLB is currently collaborating with the James Corner Field Operations team to establish illumination strategies for the park, detailing the typical path approach and its adaptation to three feature areas.



Tongva Park; Santa Monica, CA (2013)
 CLIENT: City of Santa Monica
 PROJECT BUDGET: \$25M
 Lighting was designed with sensitivity to the surrounding neighborhood, while preserving views to the ocean. Lighting also provides a safe and comfortable environment for occupants while meeting local and California energy codes.

Lotus Water



UC Berkeley Lower Sproul Redevelopment; Berkeley, CA (2015)
 CLIENT: UC Berkeley
 PROJECT BUDGET: \$223M
 This project revitalizes the underutilized and aging space into the new heart of student life on campus.



Green Infrastructure Projects; San Francisco, CA (under construction)
 CLIENT: SFPUC
 PROJECT BUDGET: \$57M
 Lotus is the lead civil engineer or senior reviewer on seven green infrastructure demonstration projects being implemented by the San Francisco Public Utilities Commission (SFPUC).



Urban Watershed Assessments; San Francisco, CA (ongoing)
 CLIENT: SFPUC
 PROJECT BUDGET: \$1.2M
 Lotus Water, as part of the AECOM/Parsons JV team, is conducting watershed assessments to identify and evaluate capital improvement projects to meet the City's wastewater, stormwater, and non-potable water supply objectives.

CHS Consulting



Central Waterfront/Dogpatch Public Realm Plan; San Francisco (2016)
CLIENT: SF Planning Department
BUDGET: \$20,000

As part of a consultant team, CHS developed designs and a framework for the shared public spaces in the area, including street rights-of-way, parks, and other open spaces.



Transbay Transit Center Area Streetscape; San Francisco (2006)
CLIENT: SF Redev. Agency
BUDGET: \$35,000

This project provided for streetscape enhancements in the 400-acre area to improve overall livability and pedestrian, bicycle, and transit access.



Lombard Street Improvements TMP San Francisco (ongoing)
CLIENT: SFDPW
BUDGET: \$120,000

CHS Consulting Group is developing the Traffic Management Plan (TMP) for SFDPW.

Integral Group



The Hive Mixed-Use Development Oakland, CA (2014)
CLIENT: Signature Dev. Group
BUDGET: \$50M

The Hive is a mixed-use development in Uptown Oakland consisting of retail and office space, and 104 residential units.



Hayward Zero Net Energy Library Hayward, CA (2018)
CLIENT: City of Hayward
BUDGET: \$59.9M

Hayward's new 21st Century Library & Community Learning Center will be located in the heart of the Hayward's historic downtown district and serve as a gathering space for the local community.



Bosa Insignia Condominiums Seattle, WA (ongoing)
CLIENT: Bosa Development
BUDGET: not disclosed

The Insignia Tower development is a mixed use residential project comprising two high-rise towers located in downtown Seattle.

KTDA



Waterfront Transportation Projects San Francisco, CA

CLIENT: Various City agencies
BUDGET: not disclosed

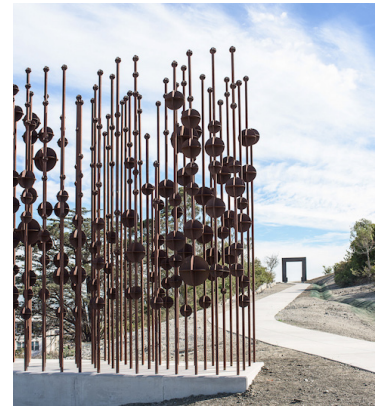
KTDA worked as subconsultant to Sasaki Associates to provide design review services for signage, graphics, public art and urban design.



Yerba Buena Gardens San Francisco, CA

CLIENT: Olympia & York, Developer, SF Redev. Agency
BUDGET: not disclosed

KTDA created branding, identity and marketing graphics a collateral for the development team of the largest public gardens and cultural district of San Francisco's South of Market.



Hunters Point Shipyard San Francisco, CA

CLIENT: SF Redev. Agency
BUDGET: not disclosed

KTDA worked in association with Helene Fried to provide graphic and project management support in the selection, commission, and installation of nine local and national artworks as part of the Hunters Point Shipyard Public Art Project.

MJMMG



Mission Bay San Francisco, CA (ongoing)

CLIENT: Office of the City Admin
BUDGET: not disclosed

More than 12 acres of parks are developed and managed by MJMMG.



Grand Park Los Angeles, CA (2009)

CLIENT: The Related Co's, LP
BUDGET: \$56M

MJMMG created a pro forma, management plan, events feasibility study, infrastructure plan and design layout. The final product was the Civic Park Business Plan.



Pearl Brewery San Antonio, TX (2005)

CLIENT: Silver Ventures
BUDGET: Not disclosed

MJMMG provided strategic consulting services on all aspects of property redevelopment in collaboration with the developer, city officials, and community to re-envision the site.

Jim Campbell



Ocean Mirror with Fragments
San Francisco, CA (2008)

CLIENT: UCSF

BUDGET: \$160,000

Ocean Mirror consists of a low resolution LED display that is contained within a freestanding six-by-six-foot glass wall. Nearby, 7 lit cubes of glass are scattered around the garden which light up in unison with the moving image of the ocean.

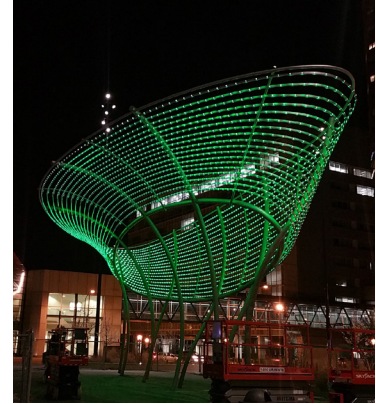


Scattered Light
Multiple locations (2010)

CLIENT: Multiple

BUDGET: \$200,000

Scattered Light consists of individually suspended light bulbs hung to create a 3 dimensional box that displays an image of Grand Central Station commuters. The randomness of the matrix creates an image that is only visible from certain perspectives.



Swirl
Des Moines, IA (2016)

CLIENT: City of Des Moines

BUDGET: \$1.4M

Swirl consists of 9 uprights and 18 stainless steel ellipses with embedded LEDs creating a form that functions as a static sculpture during the day.



Broadway-Webster Freeway Underpass; Oakland, CA (Ongoing)

CLIENT: City of Oakland

BUDGET: not disclosed

Providing acoustical input on a City of Oakland project to revitalize the underpasses at Broadway and Webster. Our focus will be on decreasing noise to these areas to help with the City's goal of

235 Ygnacio Valley Road LLC; Walnut Creek, CA

CLIENT: 235 Ygnacio Valley Road, LLC

BUDGET: not disclosed

Provided acoustical design for a living sound wall for this road; prrof of concept acoustically tested . After it was built, we tested the actual wall to verify that is provided the required noise reduction.

Devil's Slide Bypass; San Mateo, CA

CLIENT: DOT, Legal Division

BUDGET: not disclosed

Supplement noise analysis for proposed bypass on Highway 1; key focus was the noise effects on park areas.



Golden Gate Park; San Francisco, CA (ongoing)

CLIENT: SF Rec Park

BUDGET: not disclosed

Documented irrigation (well water) and potable water systems for 1,100 acre park and designed recycled water conversion plans for the irrigation systems.

Vasona Lake County Park; Los Altos, CA

CLIENT: Santa Clara County

BUDGET: not disclosed

Redesigned the 152 acre park's irrigation system, worked closely with park staff to identify underutilized turf areas that could be eliminated to provide immediate water savings.

Heather Farms Park; Walnut Creek, CA

CLIENT: SFRPD

BUDGET: not disclosed

Designed irrigation for the addition of new rotor systems to four existing softball fields and a large meadow area, documented the existing sprinkler and valve locations with survey grade GPS.

Oppenheim | Lewis

Presidio Parklands; San Francisco, CA (ongoing)

CLIENT: James Corner Field Operations

CONSTRUCTION BUDGET: \$68M

Currently providing cost consulting services for the project which involves reclaiming 14 acres of land over the top of the new Doyle Drive tunnel connecting the Marina District to the Golden Gate Bridge.

Alcatraz Embarkation Station; San Francisco, CA (ongoing)

CLIENT: EHDD Architects

CONSTRUCTION BUDGET: undetermined

Providing cost consulting services for the project to renovate portions of two piers along the waterfront and rework the plaza in between the piers.

San Francisco Tennis Center; San Francisco, CA (ongoing)

CLIENT: SF Parks Alliance

CONSTRUCTION BUDGET: \$16M

Providing cost consulting services as well as contract management and overall project budget and scoping. The project involves the replacement of the current tennis center in Golden Gate Park.

HELENE FRIED

AC Transit BRT; Alameda and Contra Costa Counties, CA (2018)

CLIENT: AC Transit

PUBLIC ART BUDGET: \$1.5M

With CD+A and PARSONS, developed a detailed memo outlining a public art plan including a corridor-wide plan, specific public art locations, types of public art elements, and selection process.

The Hanover Company; Oakland, CA (2018)

CLIENT: The Hanover Company

PUBLIC ART BUDGET: \$650,000

Two plazas located in Oakland's Valdez Corridor area, on public right of way and immediately adjacent to the new residential projects. Residential projects developed by The Hanover Company, while the

Hunters Point Shipyard Phase I Parcel A- Hillpoint Park; San Francisco, CA (2010-2016)

CLIENT: OCII

PUBLIC ART BUDGET: ~\$1.5M

Two plazas located in Oakland's Valdez Corridor area, on public right of way and immediately adjacent to the new residential projects. Residential projects developed by The Hanover Company,



TEAM
QUALIFICATIONS

4. TEAM QUALIFICATIONS

ASSIGNED PROJECT STAFF AND LEAD

The key individuals listed and identified will be performing the work and will not be substituted with other personnel or reassigned to another project without the City's prior approval. Our team is professional and highly accessible. See included resumes for recent experience, professional qualifications, and education.

Marcel Wilson - Design Director, Principal in Charge

Tasks to be Performed: lead the design, strategy, and communications of the project

Scott Smith - Technical Director

Tasks to be Performed: lead the operational, quality assurance, and delivery systems for the project

Sarah Moos Thompson - Project Manager

Tasks to be Performed: day-to-day contact, manage the design, deliverables, team and sub-consultants, oversee and manage entitlements, communications of the project.

Peter Frankel - Project Landscape Architect, Streetscape Specialist

Tasks to be Performed: develop the technical design and documentation of the project, provide expertise in streetscape design.

Karthik Kumar - Project Architect, Delivery Lead

Tasks to be Performed: oversee the technical design and documentation, and construction administration

EXPERIENCE OF FIRM AND SUBCONSULTANTS

We have an outstanding team comprised of internationally recognized design and technical experts specifically selected to meet the project's needs, schedules, deadlines, and budgets. Our combined portfolio includes recently completed exceptional projects similar in scope and scale to The Loop. See included resumes for sub-consultants, recent experience, professional qualifications, and educations.



Marcel Wilson

Founding Principal / Design Director

EDUCATION /

Master of Landscape Architecture with
Distinction

Harvard Graduate School of Design
Boston, Massachusetts

Bachelor of Landscape Architecture
Colorado State University
Fort Collins, Colorado

PROFESSIONAL REGISTRATIONS /

California RLA #5378

ASLA Certified

ACADEMIC POSITIONS /

Visiting Professor

UC Berkeley College of Environmental
Design

PUBLIC SERVICE /

Board of Directors
San Francisco Parks Alliance
San Francisco, California

Board of Directors
San Francisco Neighborhood Parks
Council
San Francisco, California

Design Advisor
SPUR
San Francisco, California

Mayor's Open Space Taskforce
San Francisco, California

Mayor's Blue Greenway Task Force
San Francisco, California

Marcel founded Bionic in 2007 on the belief that every project offers the possibility of invention. As design director, Marcel leads the design, strategy, and communications efforts for the firm.

Wilson is a recognized leader of a new generation of landscape architects who are expanding the field by addressing the complex environmental and cultural conditions presented by our world today. His work combines sharp analysis with social and environmental responsibility, experimentation, and inventive creativity. He has been featured in national design and professional publications including Landscape Architecture Magazine, Dwell, SF Chronicle, and the Harvard Design Magazine. In 2012 Bionic was nominated for the Cooper Hewitt Smithsonian National Design Award.

Marcel brings repeat experience in guiding challenging projects through design processes in large organizations and the public. In these realms he has demonstrated the ability to communicate issues and concepts and channel inputs and aspirations into the design process. This unique ability keeps large projects moving, benefiting our clients and saving time and money in the process.

His recent experience includes leading the design of projects for global tech companies, Build Inc, the California Coastal Conservancy, Fort Mason Center, and the San Francisco Recreation + Parks Department.



Scott Smith

Technical Director

EDUCATION /

Master of Landscape Architecture
Noyes Foundation Fellowship
Harvard Graduate School of Design
Bachelor of Science in Landscape
Architecture
ASLA Distinguished Undergraduate
Ohio State University

PROFESSIONAL REGISTRATIONS /

California RLA #2779
CLARB #7625
GBCI-LEED-AP
CSI-CCCA #706

PUBLIC SERVICE /

Land Use Chair
Environmental Forum of Marin
Marin County, California
Director
Mill Valley Fall Arts Festival
Mill Valley, California
President
Mill Valley Lion's Club
Mill Valley, California
Executive Board BSA
Marin Council
Marin County, California
Program Chair
Mill Valley Day in the Park
Mill Valley, California

Scott Smith has built a career on an ability to cross the disciplines of planning, urban design, and landscape architecture fluidly and collaboratively. This came about naturally through a distinctive combination of pragmatic methodology, scholarship, and civic vision across many assignments.

As technical director, Scott leads the operational, quality assurance and delivery systems for the firm. His work in China since 2005 has been in sixteen provinces for the public, educational, and corporate sectors, often engaged with fast-moving consultant teams on complex waterfront settings involving regional areas of land transformation. Domestically he has worked throughout the country with a focus on the western states where he holds professional certifications.

Scott is LEED-AP certified. He is a savvy Certified Construction Contract Administrator who has prepared permit packages, at all levels and jumbo financial and bid packages in multi-year commitments to implement high performance, green and sustainable infrastructure projects such as Brightwater Treatment Facility for King County Washington (1.5 billion USD) and One Island East in Hong Kong (23 million USD)

Scott has repeat experience leading time-critical commercial contracts with extraordinary architectural and horticultural complexity like the intricate Mandarin Oriental Resort at Las Vegas Citycenter with KPF and Gensler.

His approach to the infrastructure and aesthetic aspects of a project are rooted in a money management knowledge with the experience that positions innovative design to be measurable and acutely responsive to financial targets. Scott has earned awards of merit, honor, and excellence from the ASLA as well as the Judges Award from the CLCA, their highest award.



Sarah Moos Thompson

Associate / Project Manager

EXPERIENCE /

Associate- Bionic; San Francisco
AECOM; San Francisco
San Francisco Parks Alliance
Piero N. Patri Fellow- SPUR; San Francisco

EDUCATION /

University of California, Berkeley
Masters of Landscape Architecture with design excellence
Masters of City & Regional Planning: Urban Design

Scripps College, Bachelor of Arts with high honors

PROFESSIONAL REGISTRATIONS /

California RLA #6171

ASLA Certified

CLARB Certified

ACADEMIC EXPERIENCE /

Graduate Student Instructor - UC Berkeley
Graduate Student Researcher - UC Berkeley
Invited Jury Critic - UC Berkeley

AWARDS /

ASLA-NCC Professional Honor Award for Analysis, Research & Planning
ASLA Student Honor Award for General Design
ASLA-NCC Student Honor Award
ASLA-NCC Student Merit Award

Sarah Moos Thompson is a leader in innovative landscape systems thinking spanning the disciplines of landscape architecture, urban design, and planning. She is a licensed landscape architect also trained as a planner and urban designer.

As a project leader at Bionic, Sarah manages the design, entitlement, and documentation of projects ranging from waterfronts and coastal access systems to urban districts, parks, and tech campuses throughout California. She brings repeat experience managing large project teams, entitling public and private projects, and communicating complex landscape and urban design concepts to clients, communities, and agencies.

Sarah's portfolio includes entitlement of the 27-acre India Basin Waterfront Park & Mixed-use Development in San Francisco; a Public Works Plan for coastal access sites throughout Malibu; and a built \$10 million LinkedIn workplace in the South Bay that seamlessly merges people, ecology, and fire lanes in a public plaza, among others. From her project experience, she has an advanced knowledge of coastal resiliency planning and pioneering adaptation strategies in the Bay Area.

Sarah has been recognized as an emerging thinker in the profession and has been featured in professional publications including Landscape Architecture Magazine, Scenario Journal, and Built Environment. She has also been recognized with numerous international design awards including ASLA, Curbed, Re-Thinking the Future, Samsung Everland, and the SPUR Piero N. Patri Fellowship.



Peter Frankel

Associate / Project Manager

Peter is a licensed landscape architect also trained as a planner. As a project leader at Bionic, he manages projects through all stages of design from master planning through construction. He has experience with diverse project types and scales, including the design of landscapes on structure, public parks, campuses, and urban districts.

From his project experience including Fort Mason Center, India Basin, and 3rd Street Flashlight Park, Peter brings a distinct expertise in the design and construction of streetscapes and shared streets in the Bay Area.

He also brings repeat experience designing and building storm water management systems in public open space, including a built 24-acre LinkedIn workplace in Mountain View, the built UC Berkeley Law School in Berkeley, Bayfront Park (P23 & P24) in San Francisco, and the Water Treatment Plant Lands and Pond A18 Master Plan in San Jose. The Water Treatment Plant project received a 2016 National Award from the American Planning Association. Peter has also been involved in the design of concept and master plans for numerous large scale urban parks, including the 85-acre Urban Regional Park at former MCAS Tustin in Orange County, CA and the 70 acre Oklahoma City Central Park.

EXPERIENCE /

Associate- Bionic; San Francisco
Associate- Hargreaves Associates; SF
Peter Walker & Partners; Berkeley

EDUCATION /

University of California, Berkeley
Master of Landscape Architecture
Master of City & Regional Planning;
Urban Design



Karthik Kumar

Associate / Project Manager

Karthik draws upon his international experience working in India, Europe, and the United States to inform his context-sensitive approach to projects, and his ability to understand and analyze program and places to create meaningful landscape designs. Trained in landscape architecture and architecture, Karthik traverses interdisciplinary project teams and processes seamlessly. At Bionic, Karthik leads the technical execution of projects beginning in the conceptualization stage through construction. Karthik is an effective site work coordinator, interfacing with engineering scopes, agencies, client representatives and contractors to resolve potential issues and realize the design intent. His cost awareness of materials, landscape and architectural elements, and construction systems brings value to our clients and saves time and money throughout the process. From his project experience, he brings repeat expertise in landscapes on structure and workplaces that often involve tight urban conditions, demanding outdoor program, and storm water management requirements. His portfolio includes an infill housing project at 1532 Harrison Street in San Francisco, design and construction of large-scale workplace campuses in San Francisco and the South Bay, and entitlement of a mixed-use development 1900 Broadway in Oakland, among others. Karthik's Bay-Area experience also includes LEED, OSHPD, Bio-medical facilities, corporate campuses, public work, and Bay-Friendly Landscape projects.

EXPERIENCE /

Senior Designer/Project Manager-Creo
Landscape Architecture
Landscape Designer Level 1- MPA
Design, San Francisco
Landscape Designer/ Job Captain - K
Raghuraman Landscape Architect, India

EDUCATION /

University of Minnesota, Minneapolis
Master of Landscape Architecture



Endrestudio is an innovative and award-winning Emeryville design studio. The firm has built its reputation upon creative on-time and on-budget civic projects ranging from libraries to pedestrian bridges, public park facilities and mixed-use community centers. Endrestudio holds expertise in both engineering and architecture, which allows the designers to collaborate more efficiently on projects, quicken the pace of the design phase and increase the performance of structures. Endrestudio has successfully collaborated with public agencies, planners, and architects on a variety of retrofit, renovation, and new construction projects. **Paul Endres, FAIA SE LEED AP**, is a licensed architect and engineer with three decades of experience pioneering and perfecting innovative structures. Some of the highlights of a career spanning over one thousand buildings and iconic structures include: Dublin Pedestrian Bridge, a 700 foot long single tower shaped suspension bridge approved by city budget and scheduled to begin in 2015.



Future Cities Lab is an award-winning art and design studio located in the Dogpatch neighborhood of San Francisco, California. Since 2002, founding principals **Jason Kelly Johnson** and **Nataly Gattegno** have collaborated on a range of innovative projects exploring the intersections of art and design with advanced fabrication technologies, robotics, responsive building systems and public space. Future Cities Lab is an interdisciplinary studio employing an adventurous team of interaction designers, architects, technologists, digital craftspeople, urban ecologists and more. Future Cities Lab is at the forefront of exploring how advanced technologies, social media and the internet of things will profoundly affect how we live, work, communicate and play in the future. Their approach to design and making, which has been described as “high performance craft,” is also deeply experiential, interactive and materially rich.



Horton Lees Brogden Lighting Design is a women owned (WBE) internationally recognized architectural lighting design firm with offices in New York, San Francisco, Los Angeles, Boston, Miami, and Denver. Founded in 1968, HLB specializes in interior and exterior electric lighting, controls, and daylighting integration. Our dynamic team offers backgrounds in architecture, interior design, theater, and engineering, allowing us to create extraordinary solutions to the most complicated design challenges. Associate Principal Brandon Thrasher has worked on a wide range of project types including academic, corporate office, hospitality, residential, performing arts, and urban mixed use since joining HLB Lighting Design. He has served as the design lead for Biogen Idec’s 500,000 SF addition to their Cambridge, MA campus and the seven-building Commonwealth Honors College Residential Complex at the University of Massachusetts-Amherst. He led the design of the award winning renovation to the Langham Hotel lobby in Boston, MA.



Established in 2007, **Lotus Water** is a full service civil engineering consulting firm that specializes in delivering sustainable water management solutions and water-sensitive urban design systems. Our water quality and resource management systems are not just designed to meet city requirements, but are optimized to meet project financial goals, integrate seamlessly with site aesthetics, and exceed sustainability targets. In addition to our water resource specialty, Lotus delivers the full spectrum of economically, environmentally, and socially balanced civil engineering services. **Principal Eric Zickler, PE**, is a water resource engineer and sustainable infrastructure specialist and is the Principal-in-charge for community infrastructure at Lotus Water. He has 17 years of experience working for large public-sector clients on wet utility design and planning as well as over 11 years of regulatory consulting in San Francisco.



CHS Consulting Group is a solution-oriented company. We offer bold visions, and innovative and creative strategies, using state-of-the-art software to perform high quality technical analyses and creative graphics (such as animated simulation modeling results) to present recommendations. We are committed to providing our clients with efficient, effective and enduring transportation systems. **Principal Chi-Hsin Shao, TE, AICP**, has almost 40 years of experience in transportation planning and traffic engineering, specializing in multimodal transportation planning and systems. He is a visionary transportation planner noted for his ability to understand and articulate needs and to forge consensus among diverse groups using creative strategies and approaches. Mr. Shao has assisted urban designers and landscape architects in many streetscape and public realm improvement projects in cities throughout California and recently worked with the San Francisco Planning Department on the Central Waterfront/Dogpatch Public Realm Plan.



Charles M. Salter Associates, Inc. was founded in 1975. We consult in acoustics and design audiovisual, telecommunications, and security systems for buildings. With two offices in the Bay Area, we are involved in over 900 projects per year worldwide. Our team of 50+ includes professional engineers and LEED certified professionals, as well individuals with interdisciplinary and advanced degrees in engineering, architecture, music, linguistics, business, and forensics. We draw from this diverse expertise to develop solutions tailored to each project. **President Charles M. Salter, PE**, has practiced acoustical engineering for over 40 years, consulting in the areas of architectural acoustics, noise control engineering, and environmental noise impact. He has had project responsibility for various facility types including schools, recreation centers, offices, theaters, residences, hospitals, and civic buildings.



Integral Group is an interactive global network of mechanical, electrical, plumbing and energy engineers collaborating under a single deep green engineering umbrella. We provide a full range of building system design and energy analysis services, and with a staff of over 350, located in fourteen offices internationally, Integral Group is an innovative leader in building system design. As a member of both the US and Canada Green Building Councils, we have 90+ LEED Accredited Professionals with expertise that includes alternative energy sources, passive system design and green building systems. We focus exclusively on highly energy efficient and sustainable design projects. **Principal Ray A. Juachon, PE**, brings over fourteen years of experience to Integral Group. He has worked on a wide array of projects including educational, multi-residential, healthcare, industrial and commercial facilities. He has experience designing a wide array of technical systems, and is well versed in coordination issues between the architectural, structural, mechanical and construction disciplines that are critical to delivering projects to clients on-time and on-budget.



Russell D. Mitchell & Associates, Inc. (RMA) is a consulting firm devoted to the design of quality irrigation systems and the effective use of water management techniques and technologies since 1970. Our design projects have included private custom residences, housing developments, city parks, street improvements, foreign government projects, commercial business parks and private, public and overseas golf courses. Our expert staff is directly involved with the dynamic nature of the irrigation industry. This involvement allows for the selection of quality products and their appropriate application using professional design methods. The specific requirements of each project are addressed in order for our work to compliment the landscape and building architecture along with the client's needs. Our firm employs a team approach to irrigation design, each designer follows industry design guidelines and established principles and standards. It is RMA's goal to create high-quality finished designs that smoothly integrate with all aspects of the landscape and site improvements.

Oppenheim | Lewis

Oppenheim Lewis has provided innovative and wide-ranging consulting services for cultural educational institutions and a variety of other clients for the past thirty years. One defining characteristic is the niche nature of our projects: our client's projects are one-of-a-kind and each project meaningfully changes the life of the institution. We provide both cost consulting and project management services and our participation in the costing process and design workshops provide a balance between aesthetics, engineering requirements, and cost, as well institutional sustainability, operations costs, potential revenues, maximizing use of resources, and other factors of institutional value. Founding **Principals Paul Oppenheim** and **Scott Lewis** maintain a collaborative of work, both internally and externally, and both participate on most projects.

HELENE FRIED

Helene Fried Associates provides consultant services primarily in the areas of public art, cultural planning and curatorial and cultural animation to a wide range of private and public sector clients. Her client list includes public agencies and private real estate developers as well as non-profit and community groups and cultural organizations. She is nationally recognized for her work on complex, large-scale projects and often works in partnership with other design professionals and firms including independent artists, architecture and landscape architecture firms, civic and non-profit organizations, community groups and public agencies. She is known for achieving consensus among diverse groups with often-divergent views and for projects demanding the highest level of sensitivity such as the Center for the Arts at Yerba Buena Gardens, Oklahoma National Memorial, and the Flight #93 Memorial.



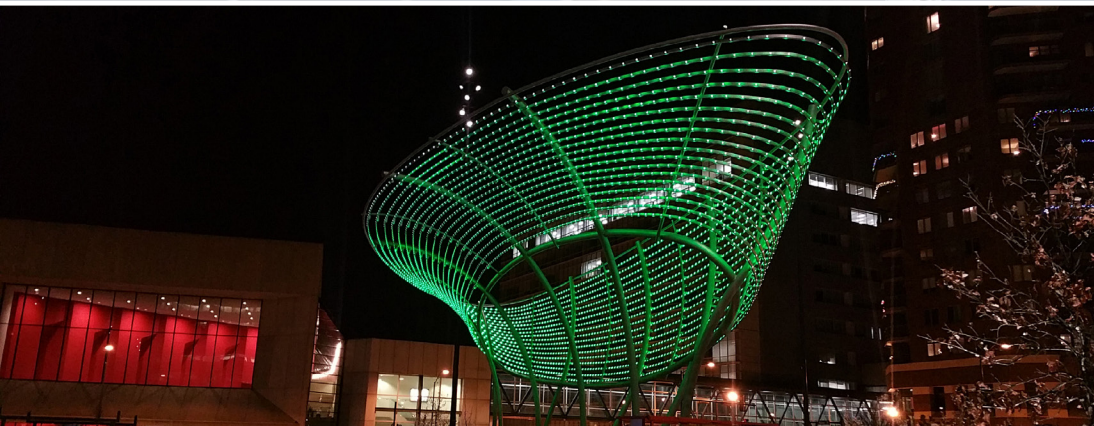
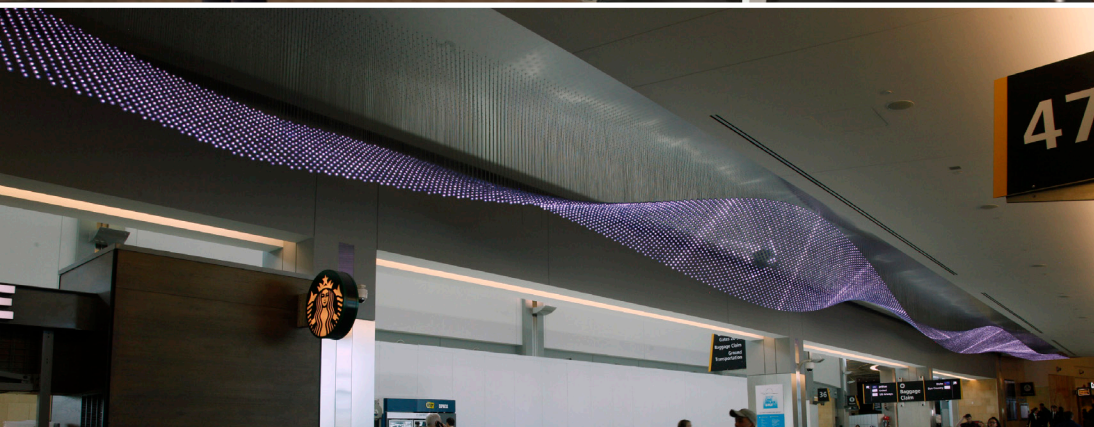
Keilani Tom Design Associates (KTDA) has provided award winning communications and environmental graphics and signage services to public agencies and development corporations for over 25 years. Our creative and analytical team's goals are to communicate and distill the message to its essentials in achieving visual clarity, and to guide visitors through unfamiliar places in the most efficient manner possible while complementing and enhancing the urban and architectural environment. **Managing Principal Keilani Tom** oversees the firm's projects, and has developed comprehensive identity and environmental programs for over thirty years. Highly adept at managing complex development projects for a broad base of clientele, Keilani is renowned for her abilities as a communicator, problem solver and collaborator by the real estate development community as well as numerous city departments of San Francisco.



Since 1991, the award-winning strategists, advisors and managers of **MJM Management Group (MJMMG)** have activated, re-envisioned and maintained parks, districts and developments to improve their financial and social performance. We are dedicated and involved community stewards offering a single source solution for full-service integrated property management needs, placemaking development, and special assessment district formation and services. **President/CEO Mary McCue** brings more than 20 years of management experience for urban public spaces and facilities. In her role as President and CEO, she leads a multi-disciplinary team managing Union Square Park, Mission Creek Park, the exterior setting for the Four Seasons Hotel and Yerba Buena Lane, as well as servicing four of the city's business improvement and community benefit districts.



Jim Campbell (b. 1956) is an artist. His work has been exhibited internationally and throughout North America in institutions such as the Whitney Museum of American Art, New York; the San Francisco Museum of Modern Art; and The J. Paul Getty Museum, Los Angeles. In 2012, he was the recipient of the San Francisco Museum of Modern Art's 13th Annual Bay Area Treasure Award. Previous honors include a Rockefeller Foundation Fellowship Award in Multimedia, three Langlois Foundation Grants and a Guggenheim Fellowship Award. He has two Bachelor of Science Degrees in Mathematics and Engineering from MIT and as an engineer holds nearly twenty patents in the field of video image processing. His recent work combine sculptural forms with light based displays and function as sculpture even when the lights are not seen.



REFERENCES

5. REFERENCES

LEAD PROPOSER

Philip A. Ginsburg, General Manager, San Francisco Recreation and Park Department
McLaren Lodge in Golden Gate Park | 501 Stanyan Street | San Francisco, CA | 94117
phil.ginsburg@sfgov.org, (415) 831.2701
Project: India Basin

Joan Cardellino, Regional Manager, Coastal Conservancy
1515 Clay Street, 10th Floor
Oakland, CA 94612-1401
joan.cardellino@scc.ca.gov, (510) 286-4093
Project: Coastal Trail / Malibu Public Access

Rich Hillis, Executive Director, Fort Mason Center
rich@fortmason.org, (415) 345-7505
Project: Fort Mason Center

JoAnn Edwards, Executive Director, Museum of Craft and Design
2569 Third Street | San Francisco, CA 94107
jedwards@sfmcd.org, 415.773.0303
Project: 3rd Street Flashlight

LEAD PROJECT MANAGER

Carol Bach, Environmental & Regulatory Affairs Manager, Port of San Francisco Planning & Development Division
carol.bach@sfport.com, 415.274.0568
Project: Herons Head Park

David Beaupre, Planner, Port of San Francisco Planning & Development Division
david.beaupre@sfport.com, 415-274-0539
Project: Patri Fellowship, India Basin Vision Plan

Jessica Nguyen, Project Analyst, Mountains Recreation & Conservation Authority
5810 Ramirez Canyon Road, Malibu, California 90265
jessica.nguyen@mrca.ca.gov, Office: (310) 589-3230 ext. 125
Project: Malibu Coastal Public Access

Courtney Pash, Senior Project Manager, BUILD:
315 Linden Street, San Francisco, CA 94102
Courtney@bldsf.com, 415 551 7626
Project: India Basin

Nicole Avril, Project Director, Capital Partnerships, SF Recreation and Parks Department
nicole.avril@sfgov.org, 415.305.8468
Project: India Basin Vision Plan

REPRESENTATIVE PROJECTS REFERENCES



[Rob Quigley](#), Main Library of San Diego

(619) 232-0888

Project: San Diego Main Library, City of San Diego, San Diego, CA

[Ron Mason](#), City of San Mateo,

(650) 740-3341

Project: Shoreline Bridge, City of San Mateo, San Mateo, CA

[Elizabeth Ames](#), City of Palo Alto

(650) 329-2502

Project: Adobe Creek Pedestrian Bridge, City of Palo Alto, CA

[Patrick Miller](#)

(510) 524-8132

Project: Berkeley Marina Bridge

FUTURE CITIES LAB

[Deborah Cullinan](#), Chief Executive Officer

Yerba Buena Center for the Arts, San Francisco, CA 94103

dcullinan@ybca.org, (415) 978-2700

Project: Lightswarm, Murmur Wall

[Jennifer Dunlop-Fletcher](#), Helen Hilton Raiser Curator and Head of the Department of Architecture and Design

SFMOMA, San Francisco Museum of Modern Art

jdunlop@sfmoma.org, (415) 357-4014

Project: Hydramax

[Jaime Austin](#), Director of Exhibitions and Public Programming, California College of the Arts Curator and Director of Programs,

ZERO1 Art and Technology Network, San Jose, CA

jasutin2@cca.edu, (415) 269-0191

Project: Datagrove

[Joann Edwards](#), Executive Director

Museum of Craft and Design, San Francisco, CA 94107

jedwards@sfmcd.org, (415) 773-0303

Project: Trilux

The logo for HLB, consisting of the letters 'HLB' in a bold, white sans-serif font inside a solid yellow square.

[Julia Groat](#), Architectural Associate, San Francisco Public Works

30 Van Ness Avenue, Suite 4100, San Francisco, CA 94102

415.557.4613

Project: San Francisco Public Library

[Ludwig Simpao](#), Electrical Engineer, Alameda Municipal Power
2000 Grand Street, Alameda, CA 94501
510.748.3987

Project: Alameda Point Site A & Ferry Terminal

[Molly Petrick](#), Program Development & Policy Manager, San Francisco Public Utilities
Commission

525 Golden Gate Avenue, 13th Floor
San Francisco, CA 94102
415.934.5767

Project: Treasure Island Master Plan



[Raphael Garcia](#), SFPUC

(415) 551-4872

Project: San Francisco Green Infrastructure Projects

[Jacob Gilchrist](#), SF Rec & Park

(415) 581-2561

Project: San Francisco Green Infrastructure Projects

[Lesley Wong](#), SFPDPW

(415) 554-8252

Project: San Francisco Green Infrastructure Projects

[Dan Provence](#), SFMTA

(415) 701-4448

Project: San Francisco Green Infrastructure Projects

[Karen Kubick](#), SFPUC

(415) 554-3155

Project: Urban Watershed Assessments



[Robin Abad Ocubillo](#), Planner

robin.abad@sfgov.org, (415) 575 9123

Project: Central Waterfront/Dogpatch Public Realm Plan

[Shannon Cairns](#), Project Manager

shannon.cairns@sfdpw.org, (415) 581 2576

Project: 19th Avenue Improvements TMP, Lombard Street Improvements TMP

[Mike Grisso](#), Former Senior Project Manager

p. mgrisso@kilroyrealty.com, 415.243.8803

Project: Transbay Transit Center Area Streetscape



Michael London, Assistant Vice President, USF Facilities
University of San Francisco
2130 Fulton Street, San Francisco, CA 94117
Phone: 415.422.4400 | Email: melondon@usfca.edu
Projects: Environmental noise projects for USF to address noise effects on neighbors.

Jonathan Piakis, MPH-IH, Noise Control Officer
San Francisco Department of Public Health
1390 Market Street, Suite 210, San Francisco, CA 94102
Phone: 415.251.3911 | Email: jonathan.piakis@sfdph.org
Projects: Noise studies throughout San Francisco

Jeremy White, Program Manager, Physical Access Compliance
University of California, Berkeley
200 California Hall #1500, Berkeley, CA 94720
Phone: 510.642.3172 | Email: jeremybwhite@berkeley.edu
UC Berkeley Zellerbach Hall - Acoustical study of the sound impact of installing a wheelchair lift/elevator in Zellerbach Auditorium.



Scott Salge, LEED AP, Principal, Noll & Tam
scott.salge@nollandtam.com
510.542.2200
729 Heinz Ave, Berkeley, CA 94710
Project: Hayward ZNE Library (including new public park with park lighting, rainwater cistern and a public stage)

Jamie Choy, Project Manager, Signature Development
510.251.9270
jchoy@signaturedevelopment.com
2335 Broadway, Suite 200, Oakland, CA 94612
Project: The Hive Mixed-Use Development (including outdoor plaza)

Matt Patzer, Construction Manager, BOSA Development
415.863.1451
mattp@bosadev.com
480 Mission St, San Francisco, CA 94105
Project: Bosa Insignia Condominiums (including large podium-level plaza)



[Ubaldo Perez](#), Associate Civil Engineer, County of Santa Clara, Parks and Recreation
Department, 298 Garden
Hill Dr Los Gatos, CA, 408.355.2231, ubaldo.perez@PRK.SCCGOV.ORG
Project: Vasona Lake County Park

[Eric Anderson](#), Superintendent of Parks & Open Spaces
San Francisco Recreation & Parks
501 Stanyan Street, San Francisco, CA, 94117,
415.831.6818, eric.anderson@sfgov.org
Project: Golden Gate Park

[Mike Vickers](#), Park Maintenance/Open Space Public Works Manager,
City of Walnut Creek
1666 North Main St, Walnut Creek, CA 94596
925.256.3538, vickers@walnut-creek.org
Project: Heather Farms Park

Oppenheim | Lewis

[Richard Kennedy](#), james corner field operations,
415.943.9197
Project: Presidio Parklands, San Francisco

[Paula Cabot](#), Project Manager, Presidio Trust,
415.561.5300
Project: Presidio Parklands, San Francisco

[Jennifer Devlin](#), EHDD Architects,
415.285.9193
Project: Alcatraz Embarkation Station, San Francisco

[Catherine Barner](#), GGNPC,
415.561.3000
Project: Alcatraz Embarkation Station

[Julie Exley](#), SF Tennis Coalition,
415.710.6279
Project: San Francisco Tennis Center

[Daliah Khoury](#), SFRPD,
415.831.2700
Project: San Francisco Tennis Center

HELENE FRIED

[Amabel Akwa-Asare](#)

Office of Economic and Workforce Development (formerly with OCII)

T: 415 554-6969 (Note: main department number, do not have her current direct line)

E: Amabel.akwa-asare@sfgov.org

OEWD

One South Van Ness Ave, 5th Floor

San Francisco, CA 94103

[Susan Pontious](#), Director of Public Art and Civic Art Collection

T: 415 252-2241

E: susan.pontious@sfgov.org

SF Arts Commission

War Memorial Veterans Building

401 Van Ness Avenue, Suite #325

San Francisco, CA 94102

[Rama Pochiraju](#), Executive Director of Planning and Engineering

T: 510 891-5448 or 510 520-7914 (cell)

E: rpochiraju@actransit.org

Alameda –Contra Costa Transit District

1600 Franklin Street 10th Floor

Oakland, CA 94612



KEILANI TOM DESIGN ASSOCIATES

[Ms. Kary Schulman](#), Grants for the Arts, City and County of San Francisco

Citywide Banner Program

415.554.6710

[Ms. Jill Manton](#), Director of Public Art, Waterfront Transportation Projects

San Francisco Art Commission

415.252.2585

[Ms. Annie Chung](#), CEO, Ms. Rosalyn Koo, Board Director

Self Help for the Elderly/Jackie Chan Senior Center

415.677.7600

[Ms. Alexandra Morgan](#), Chief Executive Officer

Family House

415.554.6920

[Mr. Gordon Ip](#), Developer, Genesis Realty Advisors

BayCrest Condominiums

972.404.8288



MJM Management Group
*Turning Public Space
into Community Value*

[Anson Lee](#), Corporate Manager
City of San Francisco Uptown Parking Corporation
(415) 982-7275, ext. 22
alee.sfupc@att.net
Project: Union Square Park & Garage

[Denise Zermani](#), Development Specialist, Real Estate Division
San Francisco Office of Community Investment and Infrastructure
(415) 749-2438
denise.zermani@sfgov.org
Project: Yerba Buena Gardens

[Doug Nelson](#), Principal-in-Charge
RHAA Landscape Architecture & Planning
(415) 383-7900
doug@rhaa.com
Project: Fulton Mall, Fresno