

POTRERO GATEWAY

MARCH 2, 2020



Potrero Gateway Project Plan:

- **Streetscape Improvements** – SF Public Works*
- **Landscaping, Fencing, Soil Stabilization at Caltrans Property** – Caltrans*
- **Public Art** – PGPSC (Steering Committee)*

* *Lead Organization*

Estimated Project Timeline- Streetscape Improvements:

Item	Task	Start	Finish
1	Planning – Site Feasibility / Master Plan	Winter 2019	Summer 2020
2	Design – Develop Construction Specs & Drawings	Summer 2020	Spring 2021
3	Advertise / Bid / Award	Spring 2021	Summer 2021
4	Construction	Fall 2021	Late 2021

Estimated Project Construction Budget:

- **Streetscape Improvements (17th Street & Corners)**

Construction Costs ~\$1,000,000

- **Public Art Installation**

Cost of Art ~\$500,000

PROJECT MASTER PLAN GOALS

- Improved Aesthetics
 - Place Making/ Gateway Announcement
- Improved Pedestrian Safety and Experience

Desired Improvements:

Lighting Art



Paving at 17th. Street Slope



Desired Improvements:

Vermont Street Landscaping + Soil Stabilization



Decorative Crosswalks

San Bruno Street Landscaping + Soil Stabilization

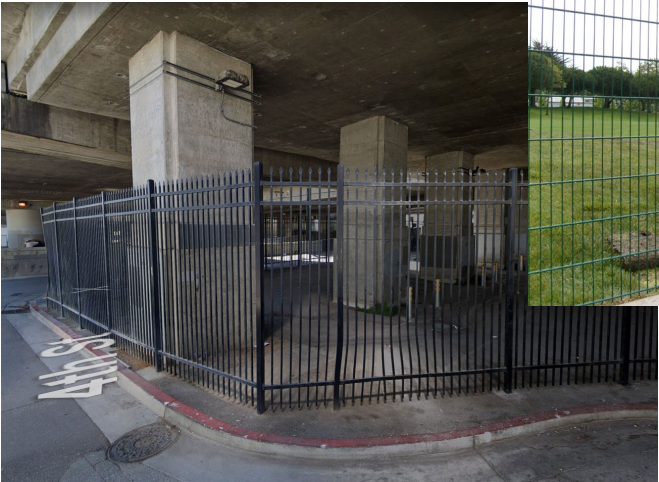


Sidewalk Planting



Desired Improvements:

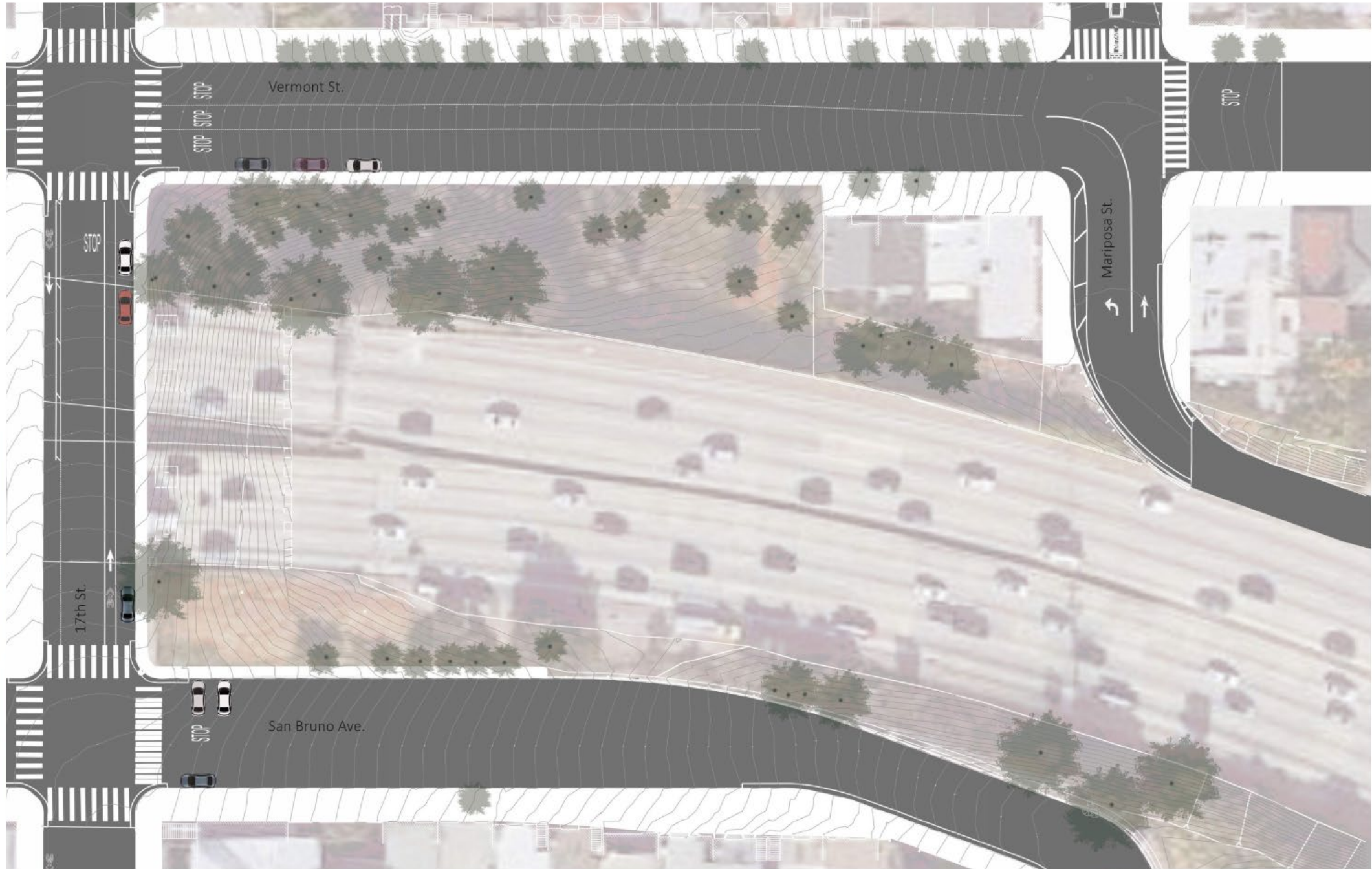
Fencing – Type, Locations and Limits ?



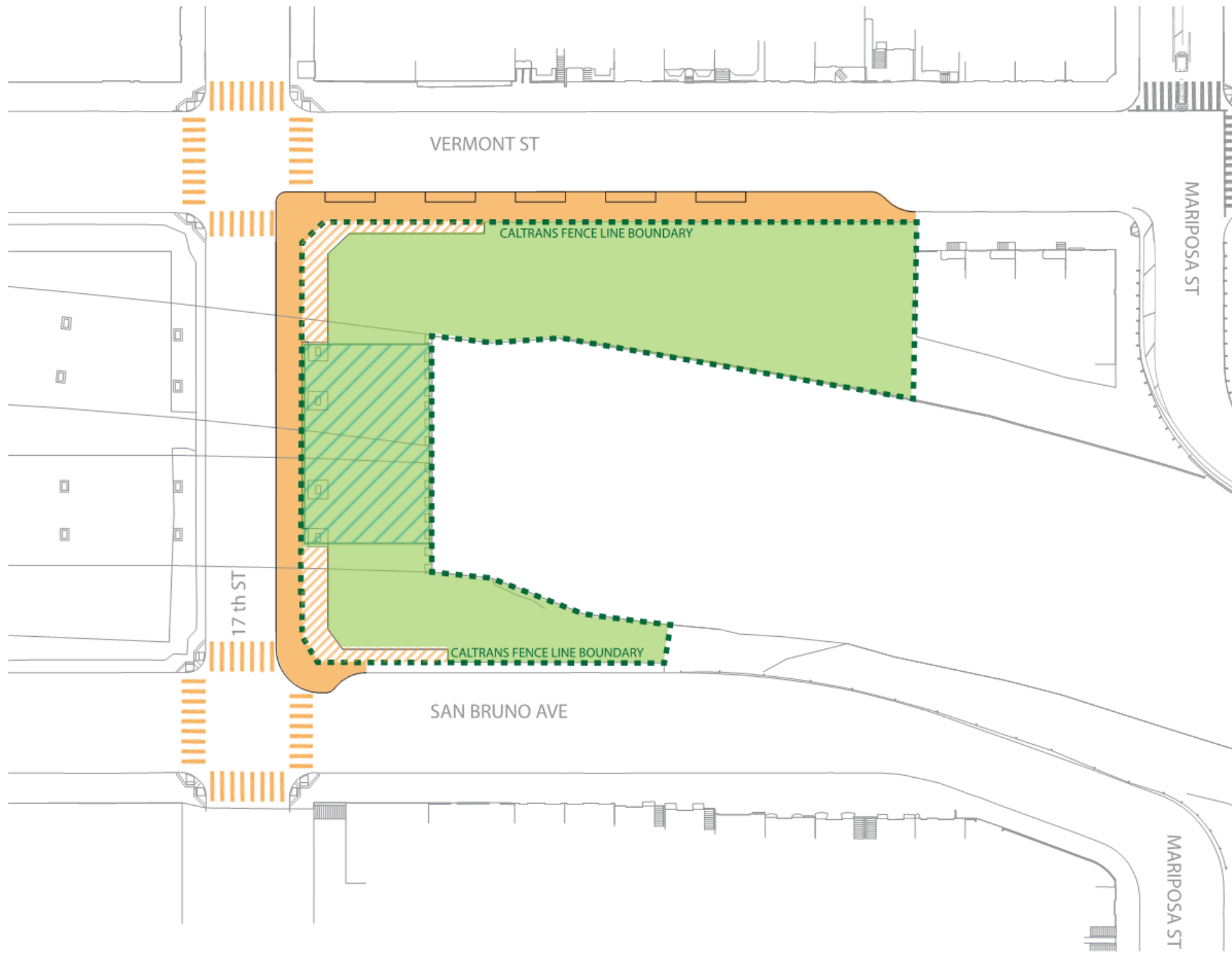
Caltrans Accepted Fence Types

Decorative Fencing

Existing Conditions



Extent of Work



Phase 1: STREETSCAPE IMPROVEMENTS

- widened sidewalk
- street trees
- decorative paving
- decorative crosswalk
- identity markers
- pedestrian lighting
- rain garden
- enhanced corners

Phase 2: CALTRANS PROPERTY IMPROVEMENTS

- fencing
- landscaping
- soil stabilization (hardscape)
- soil stabilization (vegetated)

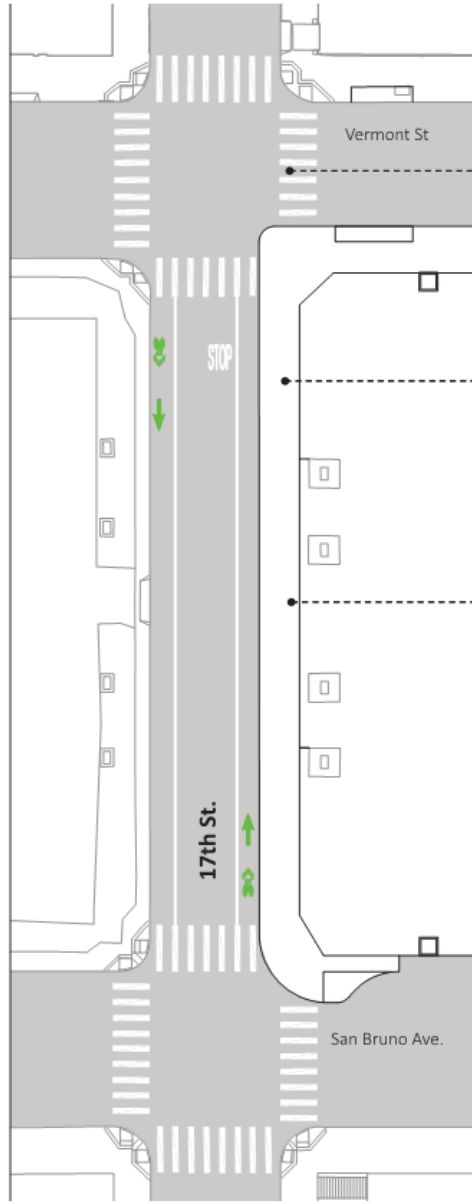
Phase 3: ART



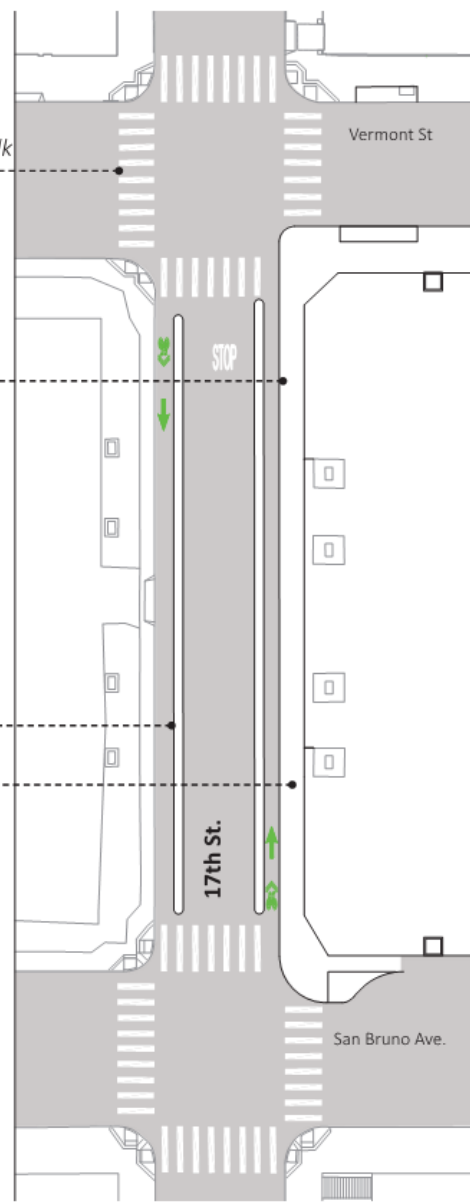
- lighting
- sculpture
- mural

17th Street- Sidewalk and Roadway Configurations Options

Option 1



Option 2



Decorative Crosswalk

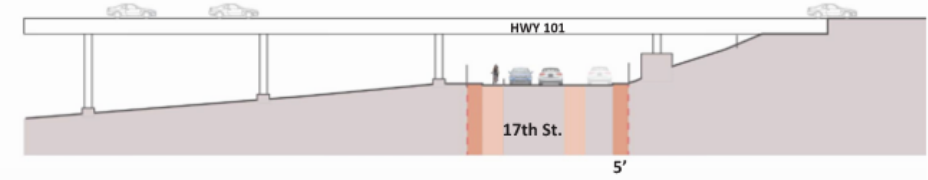
Decorative Paving

12' Sidewalk

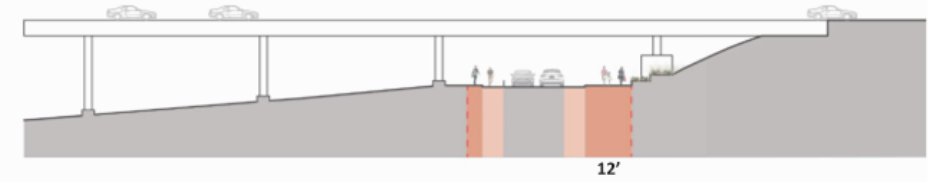
2' Median, typ.

7' Sidewalk

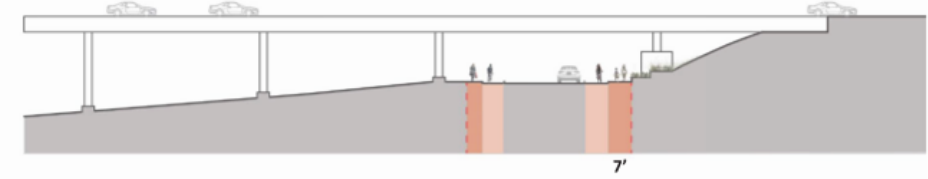
Existing



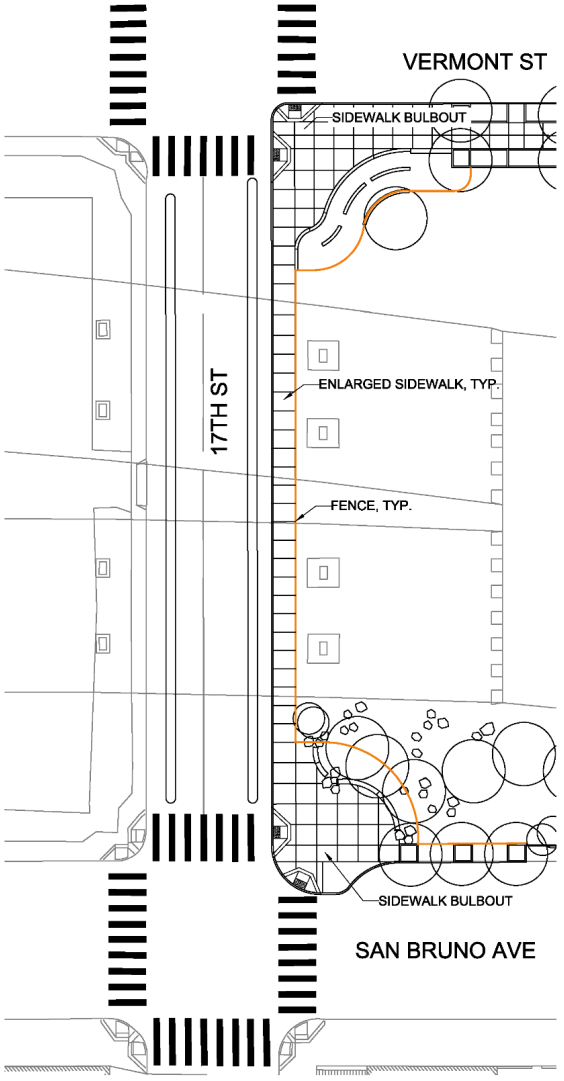
Option 1



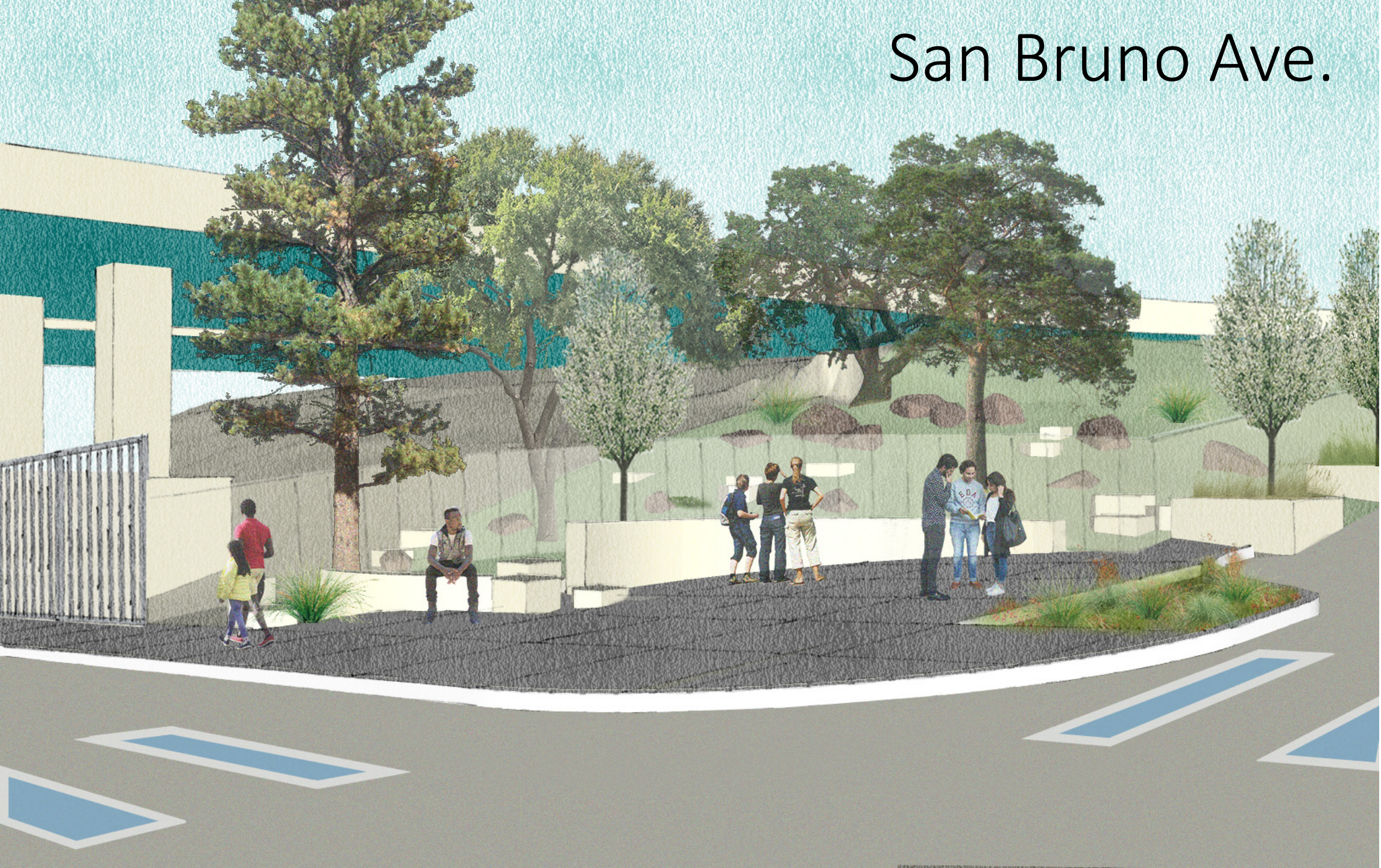
Option 2



17th Street Streetscape Plan



San Bruno Ave.



Vermont St.

