



Steering Committee Meeting  
December 28, 2020 11:00am  
ZOOM

**Steering Committee:** Daniel Sheeter, Dianne Bates, JR Eppler, Michael Kerbow, Sheldon Trimble, Kanwar Kelley, Steven Solomon, Patricia Fonseca, Peter Belden

**Guests:** Eddie Bartley, Noreen Weeden

**PW:** Trent Tieger, PW Manager

Meeting Notes

The Meeting opened at 11 with introductions to Eddie Bartley and Noreen Weeden.

Trent reported that he has given the Phase 1 document to Caltrans and is waiting for a meeting to discuss. Jean reported that an SFAC review meeting was being set for the end of January.

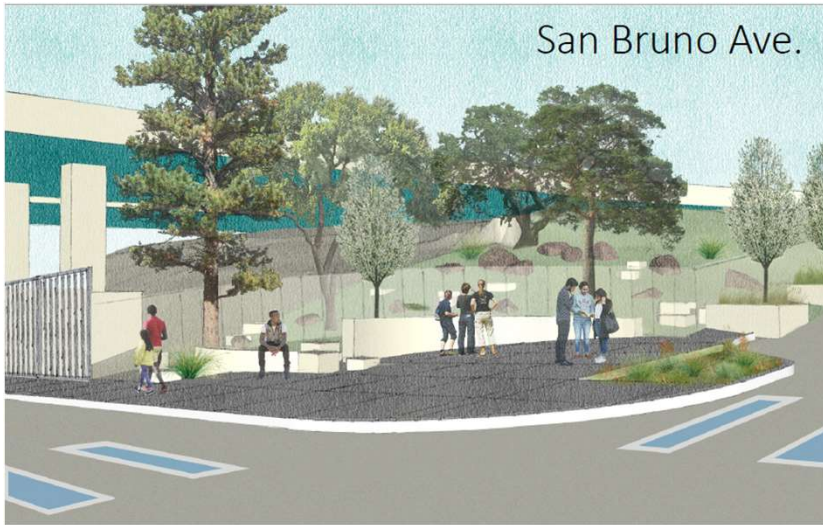
Trent presented the attached document to the group: "2949J Potrero Gateway - Phase 1 2020-12-10.pdf. "

Comments and issues made during the presentation are documented in the attached document: "Items from December 28 PGPSC review of the Phase 1 - 35% Plan"



## POTRERO GATEWAY PROJECT

17<sup>th</sup> Street from Vermont Street to San Bruno Avenue

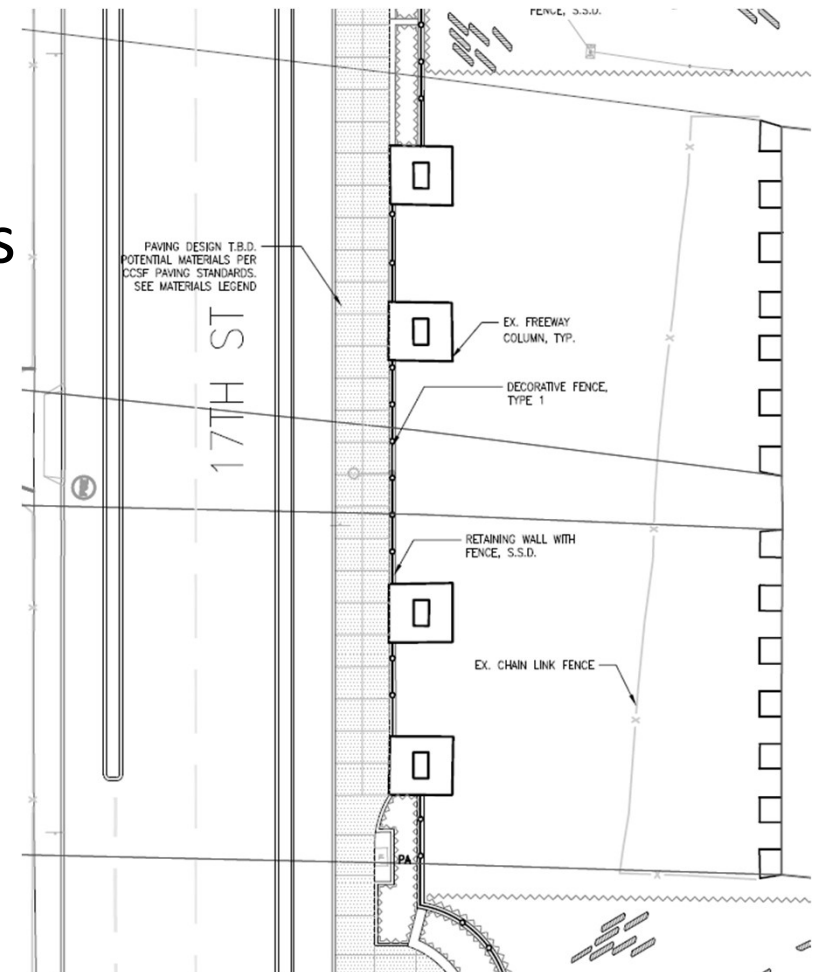


\*Crosswalk color will not be blue but decorative pattern/color possibilities available for discussion



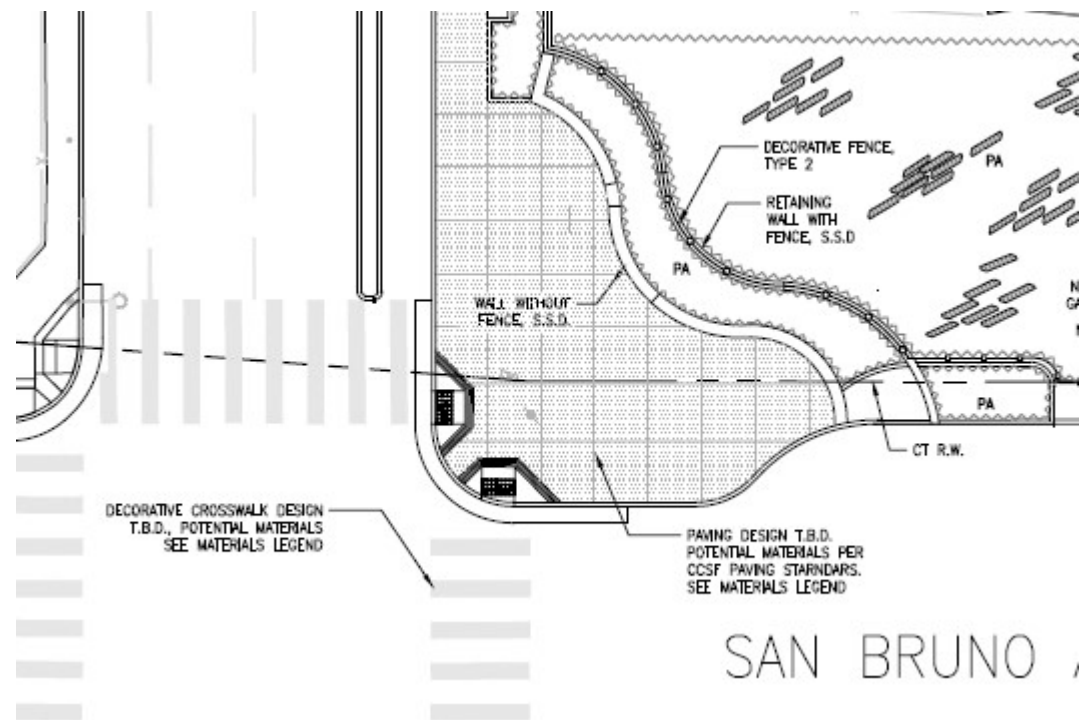
# PHASE 1 SCOPE – 17<sup>th</sup>

- Sidewalk widening (9ft)
  - To edge of freeway columns
- Protected bike lane
- Parking lane removal



# PHASE 1 SCOPE – SAN BRUNO CORNER

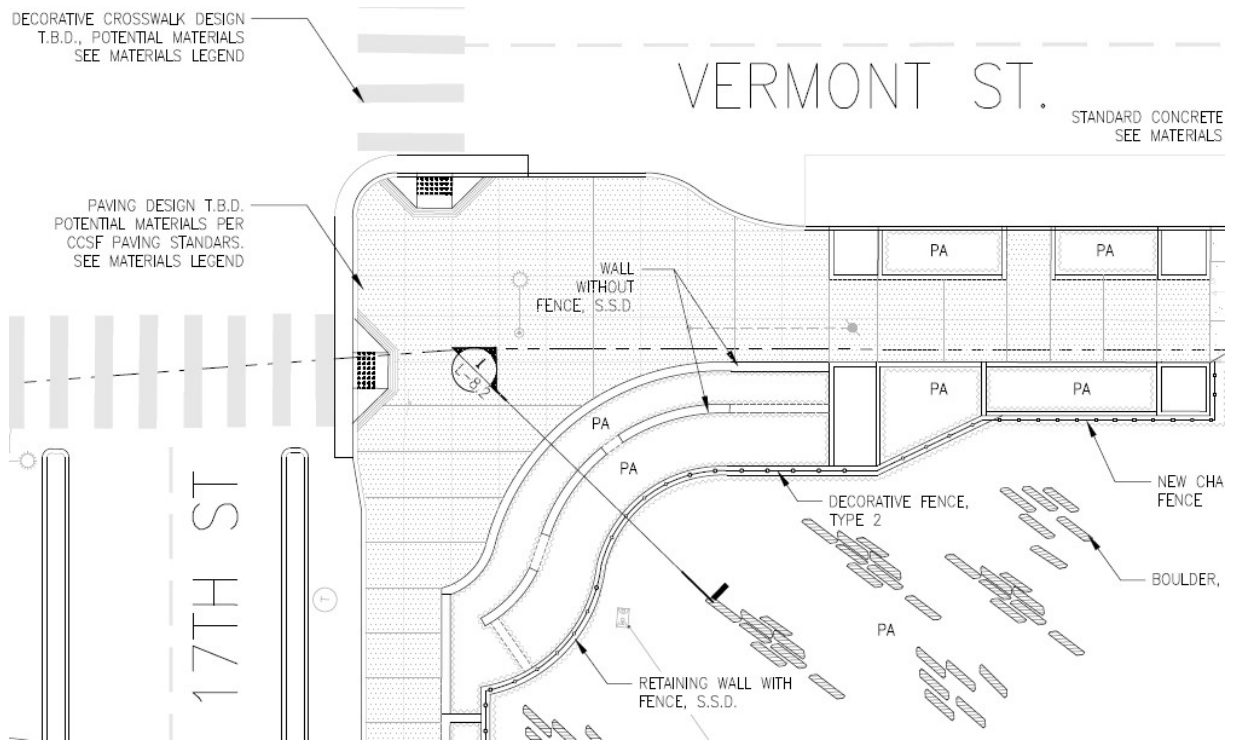
- Corner bulb-out
- Planted terraces & seating
- Flat plaza
- Decorative crosswalks
- Irrigation



SAN BRUNO

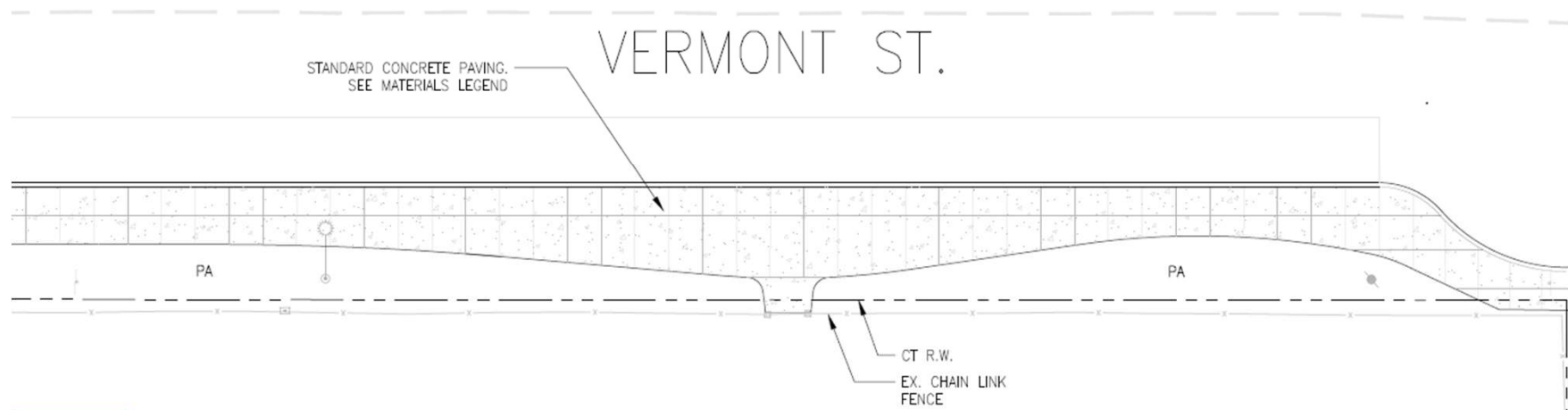
# PHASE 1 SCOPE – VERMONT CORNER

- Corner bulb-out (loss of parking spaces)
- Planted terraces & seating
- Flat plaza
- Decorative crosswalks
- Irrigation



# PHASE 1 SCOPE – VERMONT ST

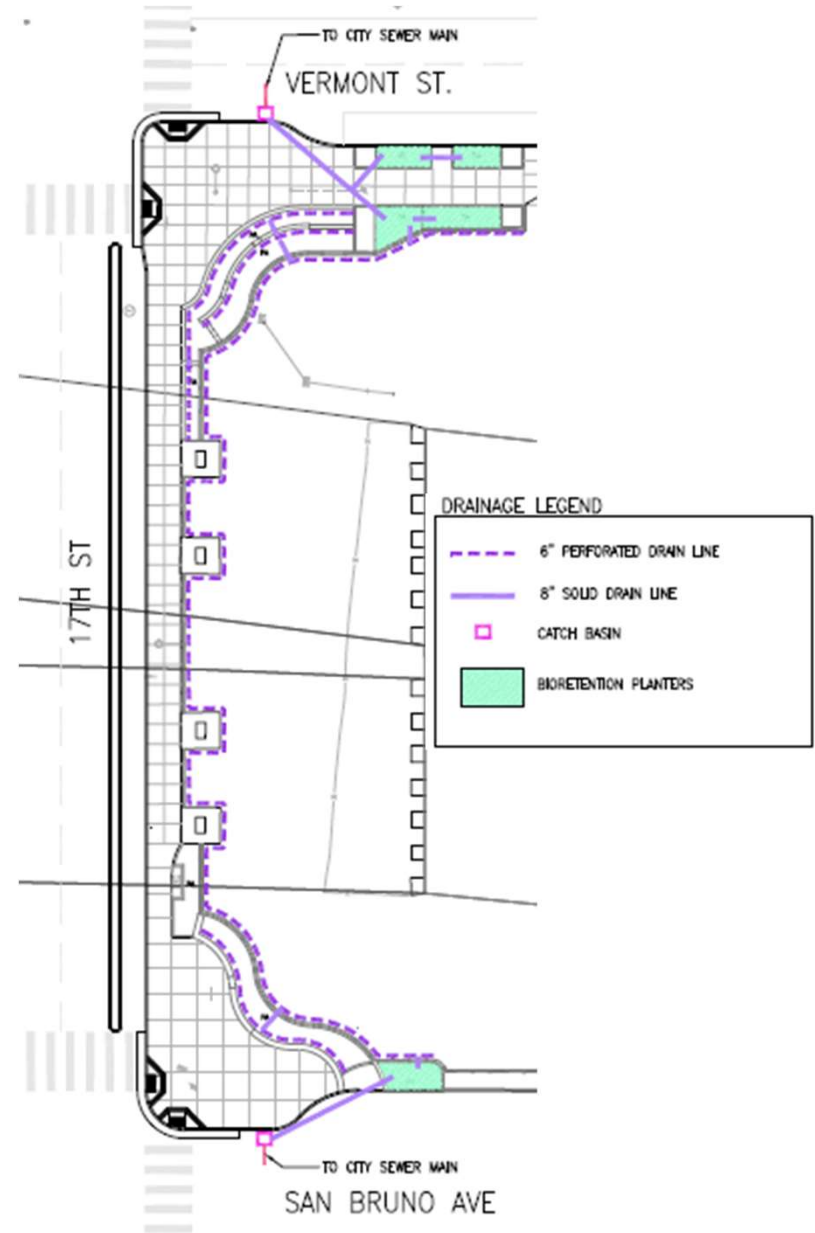
- Sidewalk widening (15ft)
  - 15ft CT fence to new curb
  - 6ft path of travel curb side
- Roadway diet (3→2 lanes)
- Community space (9ft)
  - 9ft from CT fence to path
  - Irrigation
- No parking configuration change



# DRAINAGE

- Drain lines along retaining walls
- Catchbasin relocations for bulb-outs
- Bioretention planters\*

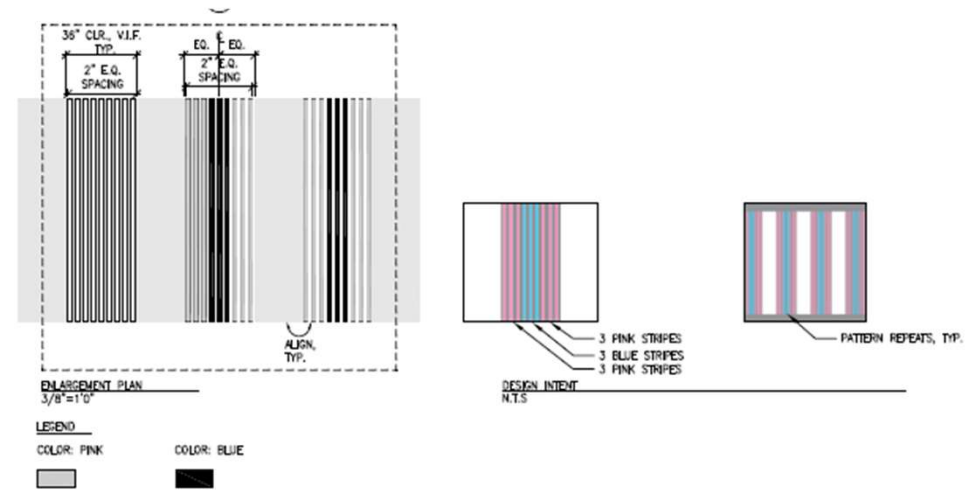
\*Note –Maintenance to be discussed before formal incorporation





# DECORATIVE CROSSWALK

- San Bruno & Vermont Intersections
- Unique color or pattern



## 2 SIMILAR/EXAMPLE DETAIL

N.T.S.

### Notes

- Must meet SFPW/SFMTA Paving & Crosswalk Guidelines
- One time installation only



## 3 COLORED ASPHALT PRINT, DESIGN T.B.D. CHARACTER IMAGES

# LIGHTING

- Accent lighting in retaining wall
- Tree uplights

## Notes

- Current budget will not allow installation of large scale lighting fixtures.
- Accent Lighting not confirmed, may change/remove as design continues and TBD maintenance agreements.

## LEGEND

◆	TYPICAL LED IN-GRADE UPLIGHTS FOR TREE LIGHTING.
▲	TYPICAL LED RECESSED COVE LIGHTING FOR LOW LEVEL HILSIDE LIGHTING
—	TYPICAL LED LINEAR WALL WASH FOR GAZING THE WALL

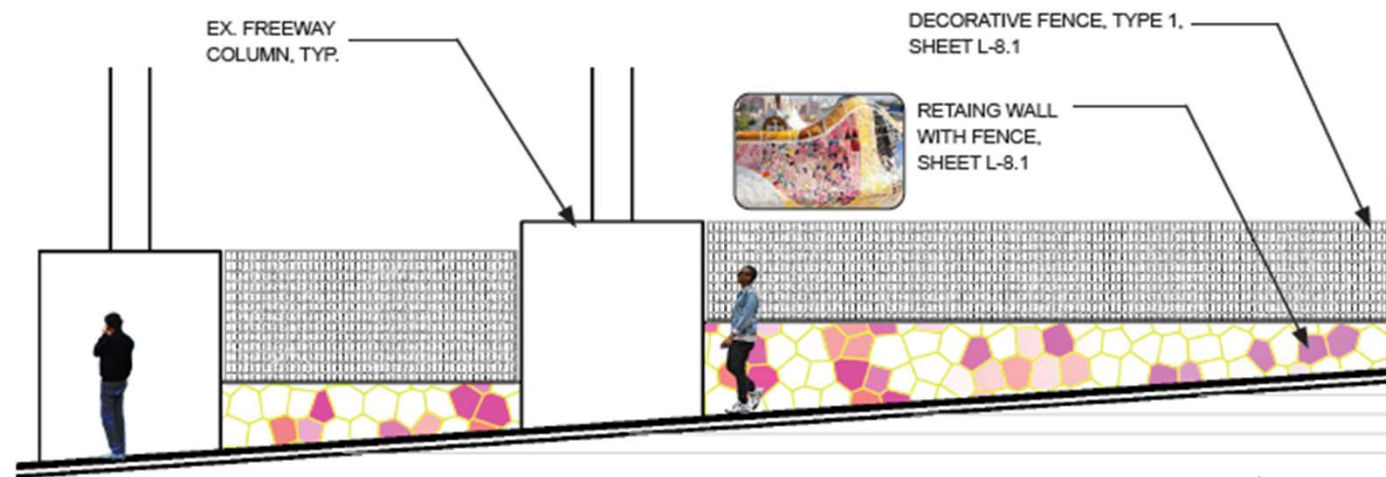
## NOTES

1. THE PROPOSED LIGHTING SCOPE IS PRIMARILY LANDSCAPE AND AESTHETIC LIGHTING FOR ACCENTING SITE FEATURES.
2. ALL LIGHTING FIXTURES SHALL BE LIGHTING COLOR CHANGING LED WITH DIMMABLE, COLOR CHANGING CONTROLLER AND ASTRONOMICAL TIME CLOCK.



# PHASE 1 – COORDINATION WITH ART

- Phase 1 Retaining Wall
  - Canvas for Murals/Tiles
- Phase 1 Accent Lighting
  - In retaining wall & tree uplights
  - Not confirmed – May change/remove as design continues and TBD maintenance agreements
- Phase 1 scope separate project and schedule from Art installation
- SFPW intends to coordinate with the selected artist the best we can given timelines
- Accent lighting, retaining wall, utility connections can be adjusted to interface with the art



Example retaining wall art feature

# GBD MOU Maintenance

- SFPW to add this location to the SFPW-Caltrans Landscape Maintenance Agreement (LMA)
- SFPW to develop MOU with GBD for maintenance of Phase 1
  - Landscaping including Bioretention Planters
  - Accent Lighting
- Art Installation – GBD to maintain or SFAC?

# PHASE 2

- SFPW to develop Conceptual Designs for San Bruno and Vermont green space not touched in Phase 1
- Landscape Architecture team to meet with Steering Committee to brainstorm ideas
- Phase 2 designs to be used as basis for further discussion with Caltrans

# TIMELINE

## Phase 1

- Design completion anticipated Summer 2021
- Construction anticipated Fall 2021 – Winter 2022

## Phase 2

- Conceptual Design beginning Winter 2021

## Art

- Artist selected/approved Spring 2021

# COMMUNITY CALTRANS REQUESTS

## Slope Stabilization

- 17<sup>th</sup> St. hillside in need of erosion protection
- Caltrans implement their standard erosion/roadside treatment
- *SFPW supports community push for Caltrans improvement*

### *Caltrans Roadside Management Options:*

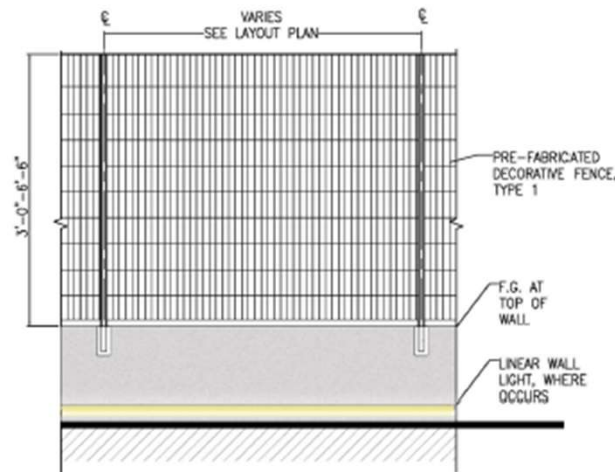
- *Rock Blanket: \$85-120/yd<sup>2</sup>*
- *Pattern Concrete: \$100-125/yd<sup>2</sup>*
- *Gravel Mulch: \$11-23/yd<sup>2</sup>*
- *Other wire/netting/vegetation options available but has shorter life cycle and needs planting/irrigation for aesthetics and upkeep*



# COMMUNITY CALTRANS REQUESTS

## Fencing

- Chain link constantly broken
- *SFPW plans to replace or repair fencing where Phase 1 work interacts (along 17<sup>th</sup> and the corners)*



DECORATIVE FENCE, TYPE 1



# COMMUNITY CALTRANS REQUESTS

## San Bruno Sound Wall

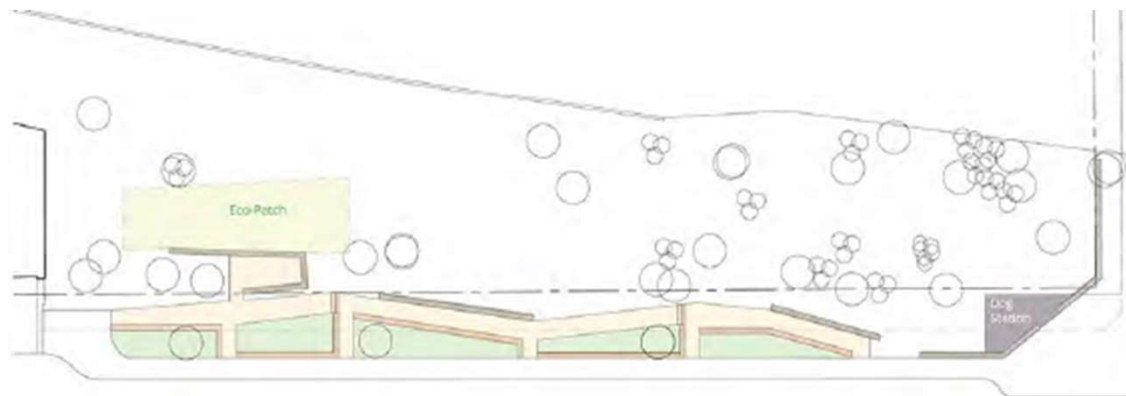
- Safety, noise, particulate concerns
- Green Wall or barrier as alternatives
- Trees that previously shielded now mostly gone
- *SFPW supports community push for Caltrans to implement safety improvements at minimum*



# COMMUNITY CALTRANS REQUESTS

## Vermont St. ROW

- Community requesting 10ft setback to the traditional ROW returned and SFPW to relocate fence as part of Phase 1
- *SFPW current design does not modify the fence along Vermont St.*
  - *Note - SFPW intends to request removal of Vermont St. fence altogether during discussions with Caltrans and installation of a fence extending the existing Sound Wall to block freeway access*
  - *TBD - Including a 10ft setback in Phase 1 (moving or replacing the existing fence) may be out of budget*



# COMMUNITY CALTRANS REQUESTS

## Encampment Mitigation – Top of 17<sup>th</sup> St. Slope

- Enclose with more robust fence or barrier
- *SFPW supports community push for Caltrans to modify the existing condition, blocking access entirely or a better deterrent*
- *Slope Stabilization treatment may resolve some issues (e.g. rock blanket)*





[www.sfpublicworks.org](http://www.sfpublicworks.org)

## Items from December 28 PGPSC review of the Phase 1 - 35% Plan

Topic	POGP Request	Resolution
<b>Bike Safety</b>		
	17 <sup>th</sup> St Bike Route - What Safety Features will PW and SFMTA include?	Peter will send an email from JR, Steven and Peter to Trent and Mike with the requests.
<b>Bridge Hill Vertex</b>		
	Need A Solution to Close off the top of the hill to prevent camping	PW wants Caltrans to address this issue and has no PW plans
	Could use Vegetation under the Bridge to tie into the Art	Trent needs to get a response from Caltrans.
	Suggested components of Solution: <ul style="list-style-type: none"> <li>• No flat area on top</li> <li>• Steel Plates over opening</li> <li>• No fence, since it encourages camping.</li> </ul>	
<b>Caltrans Contact</b>		
	Who is everyone talking to? PGP/Boosters/GBD are talking to Caltrans Public Information Officers: <ul style="list-style-type: none"> <li>• Stephen Chun</li> <li>• Vince Jacala</li> <li>• Cheryl Chambers</li> </ul> Trent is talking to a Caltrans Encroachment Engineer	The community, Represented by Boosters, DNW, GBD and PGS is talking with Caltrans PI.  Trent is talking with Caltrans engineers.
<b>Fences</b>		
	PGPSC needs to review fence locations <ul style="list-style-type: none"> <li>• Vermont Street</li> <li>• 17<sup>th</sup> Street</li> <li>• San Bruno Ave</li> </ul> PGPSC needs to review fence types	PW needs to present options to the PGPSC for fence types and locations.
<b>Lighting</b>		
	<ul style="list-style-type: none"> <li>• Night lighting is important for Safety.</li> <li>• Minimize vegetation lighting focus on lighting the hardscape area with little bleed to the vegetated areas.</li> <li>• Isn't lighting the responsibility of Caltrans?</li> </ul>	Lighting choices will be more obvious once the SFAC design is chosen
<b>Crosswalks</b>		
	Color suggested for crosswalks - California Poppy Gold	We will needs to follow PW sidewalk striping policy which will offer color for us to chose from.
<b>Budget</b>		

	<ul style="list-style-type: none"> <li>PGPSC needs to see a budget estimate to understand how much will be left for Phase 2 construction</li> <li>PGPSC will give PW it's approval once costs are understood and adjusted if need be.</li> </ul>	We need a 35% Budget estimate. We want to be able to prioritize items.
<b>Vermont</b>		
	<ul style="list-style-type: none"> <li>Request for an additional bulbout at the south end of the 6 ft sidewalk</li> <li>Integrated plan for Eco-Patch in Phase 2</li> <li>Integrate CCG grant into design</li> </ul>	<p>Bulbout at Mariposa and Vermont is not part of the PGP project, but PGP agrees it should happen.</p> <p>Bulbout at the end of the PGP scop can be mimiced with painting from MTA</p>
<b>Bulbouts</b>		
	Does SFMTA support the bulbouts?	The bulbout will not extend into 17 <sup>th</sup> Street. MTA will review plans with SFFD.
<b>San Bruno Ave</b>		
	<p>Will neighbors have access to green space at corner for walking, sitting?</p> <p>Will the existing sidewalk remain (It is blocked by wall in drawing)?</p>	This will be discussed at the San Bruno Meeting 12/9
<b>17<sup>th</sup> St Hillside</b>		
	Is the drainage appropriate?	The hillside drainage is not part of an engineering design, but is there to suggest that drainage will be addressed.

Answers Public Works needs to get from Caltrans

- How can PW work with Caltrans to alter the design at the vertex so there camping can not take place there
- Will Caltrans apply their [Rock Blanket](#) in order to stabilize the hillside under the bridge
- List the fence locations that Caltrans will permit in order to give Public Works the largest amount of open space to manage
- Can Caltrans and Public Works split the cost of a retaining wall for San Bruno Avenue?