



Steering Committee Meeting
March 10, 2021 4:00pm
ZOOM

Steering Committee Attending: JD Beltran, JR Eppler, Michael Kerbow, Sheldon Trimble, Kanwar Kelley, Sheldon Trumble

PW: Trent Tieger, PW Manager

GBD: Julie Christensen, Executive Director

GBD Candidates: , Terry McGlone

300 Kansas Project: Ethan McCall

Minutes

Meeting started at 4:05 and will be recorded as requested by Daniel and Peter. Terry and Ethan were introduced.

The attached Meeting presentation was shared with the group.

Art

Sheldon spoke about the SFAC Potrero Gateway Public Art status and progress. He described the available canvas, which is limited to pain on concrete pillars, retaining walls, fences, lighting.

Bike Route

Trent presented a new drawing (attached) that he received from SFMTA. Safety proposals were discussed.

35% PS&E

Trent reported that Caltrans has pretty much accepted the 35% design ideas. Trent pointed out that Public Works can do some work to help with he issues, but Caltrans needs to help with the stabilization of the hillside too. He had discussed the idea of the rock blanket. Julie pointed out the importance of coming up with a good solution for the area under the bridge. Caltrans also mentioned that there is a metal rail project that may address the problem of a car that runs from the freeway to the road. However, it does not address the sound and dirt pollution as well as folks living in the right-of-way. The San Bruno Avenue group and Public Works had a field trip. A conceptual design presentation will follow.

Trent is still working on updating the budget. Schedule wise, Trent anticipates the project award be assigned in December 2021. Ethan reported that Spears is interested in the biking and sidewalk improvements.

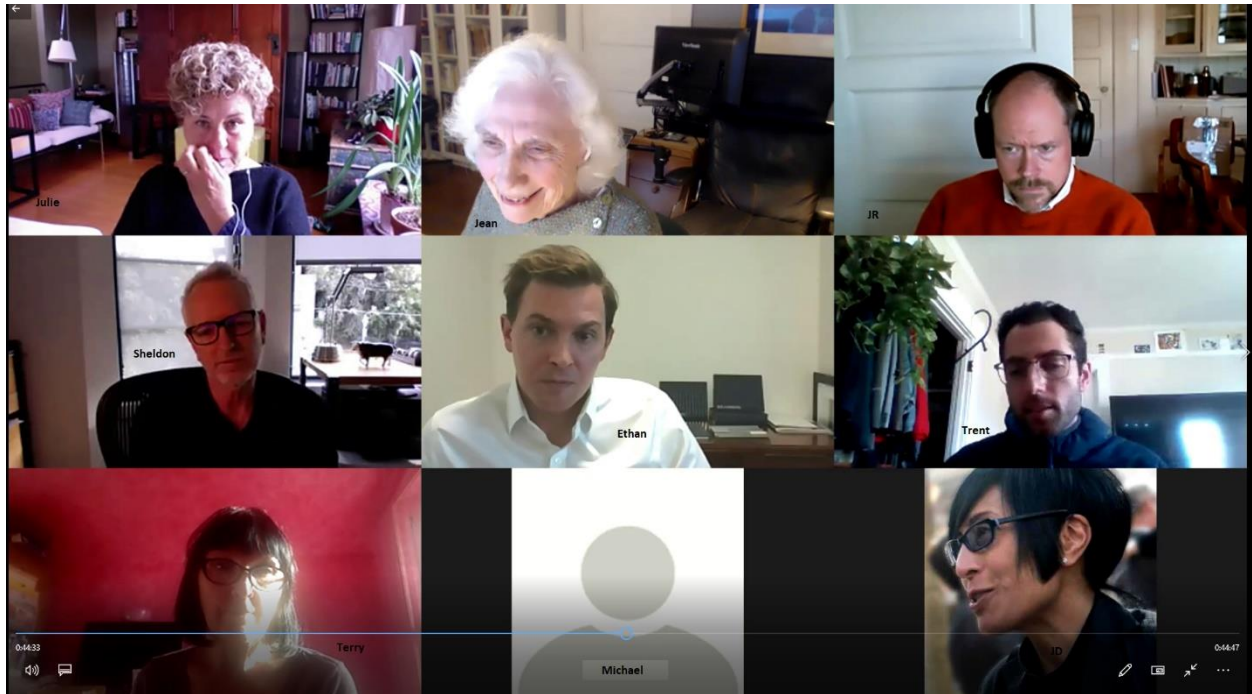
Eco-Patch

Jean mentioned that the AAH permit or adding the area into the Public Works maintenance encroachment agreement.

NW Potrero GBD Budget development

Julie presented a GBD budget overview. The document is attached.

The meeting ended at 5:30



Attendees - PGP Steering Committee Meeting 3/10/2021



Potrero Gateway Project

Steering Committee Meeting

March 10, 2021 4:00pm

ZOOM



Potrero Gateway Project

Agenda

1. Potrero Gateway Public Art
2. 17th Street Bike Lane Improvements
3. 35% PS&E (Plans, Specification and Estimate)
 - Caltrans Review Report
 - San Bruno Conceptual Design Schedule
 - PGPSC Comment List – Highlights
 - Updated Schedule including Art project interface
4. Eco-Patch Project on Vermont Street right-of way
5. NW Potrero Hill GBD Budget Process
 - Review FY 19-20 Budget Categories
 - Budget Setting Process
6. Action Items

Potrero Gateway Project

SFAC Potrero Gateway Public Art - Overview

- Artwork will be located on Caltrans property, bordering the 101 freeway on 17th Street between Vermont Street and San Bruno Avenue.
- Opportunities at this site include:
 - Murals on the four 8' x 8' concrete blocks at sidewalk level
 - Murals and or tile on retaining walls and concrete planters/seaters that will be added to the site
 - Ground embedded up-lighting installed along the sloped area may possible if budget and site constraints allow.
 - Possible artistic treatment of DPW site lighting (new since RFQ)
 - Possible artistic treatment of DPW walkway design (new since RFQ)
- Budget = \$217,000 inclusive of artist fees, design, fabrication, transportation, and installation of artwork.

Potrero Gateway Project

SFAC Potrero Gateway Public Art – Process Schedule

November 30, 2020	RFQ Issued	Completed
January 25, 2021	RFQ Application Deadline	Completed
February 16, 2021	Review Panel 1	Completed
February 17, 2021	VAC approval fo finalists	Completed
March 1, 2021	Full Commission approval of finalists	Completed
March 12, 2021	Public Art Orientation	
Late April 2021	Public Display of Proposals	
May 2021	Review Panel 2	
May 19, 2021	VAC approval of recommended artist	
June 7, 2021	Full Arts Commission approval of recommended artist	
June 2021	Artist under contract	

Potrero Gateway Project

SFAC Potrero Gateway Public Art – Art Canvas

Vermont Street

- Bulbouts
- Retaining Walls
- Landscaping
- Lighting



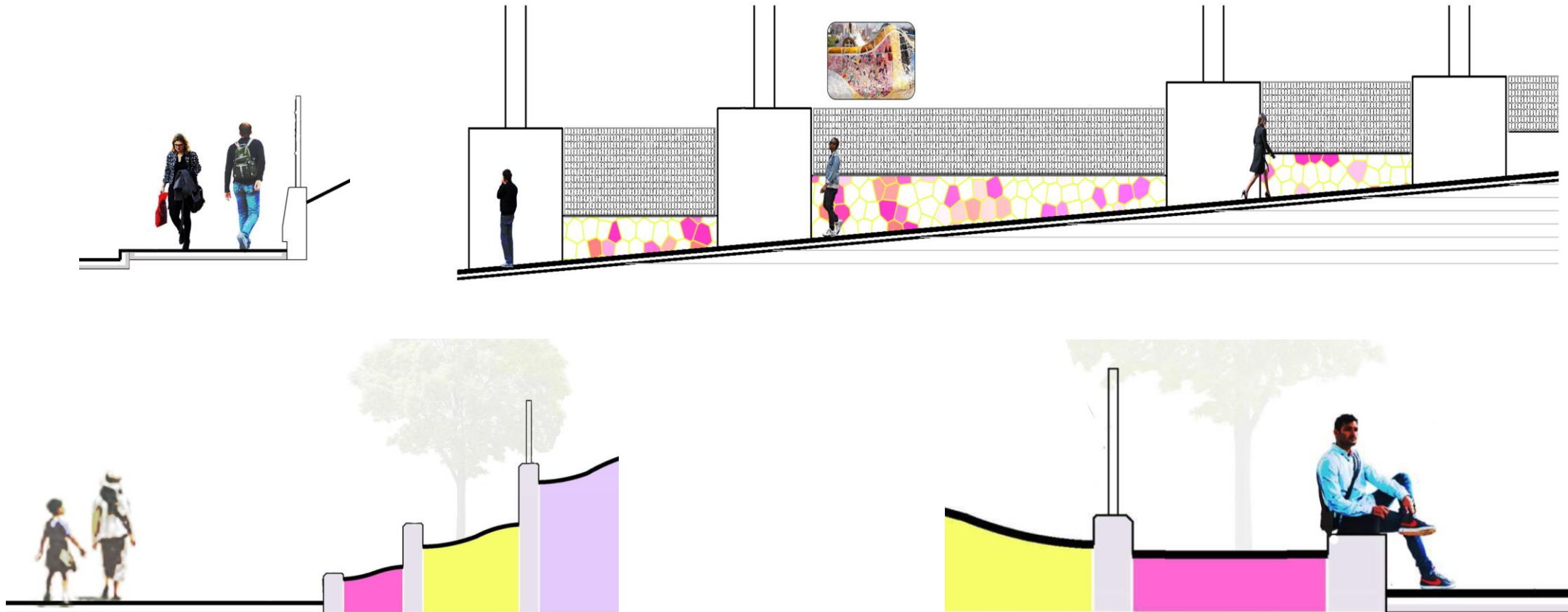
San Bruno Ave

- Bulbouts
- Retaining Walls
- Landscaping
- Lighting



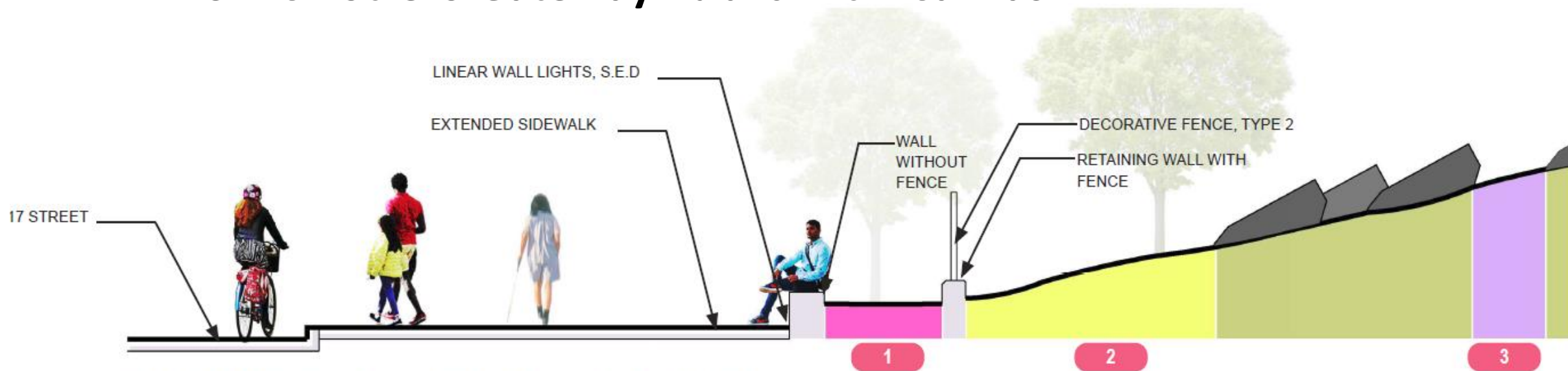
Potrero Gateway Project

SFAC Potrero Gateway Public Art – Canvas

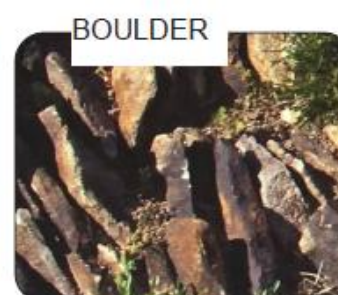


Potrero Gateway Project

SFAC Potrero Gateway Public Art – Canvas



1 SECTION D-D - SAN BRUNO AVE. CORNER



CONCEPT IMAGES

Potrero Gateway Project

SFAC Potrero Gateway Public Art – Finalists



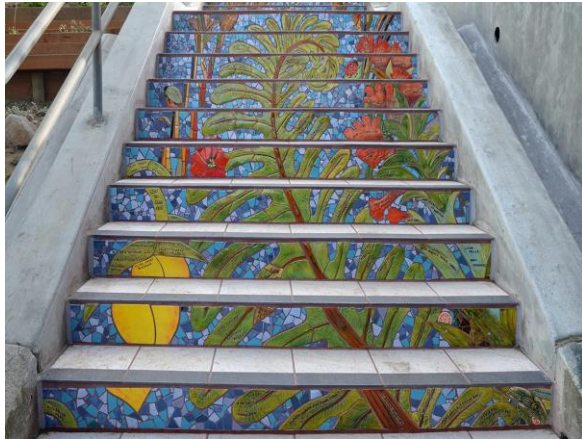
Miguel Arzabe



Gordon Huether



FutureForms



Aileen Barr and Colette Crutcher

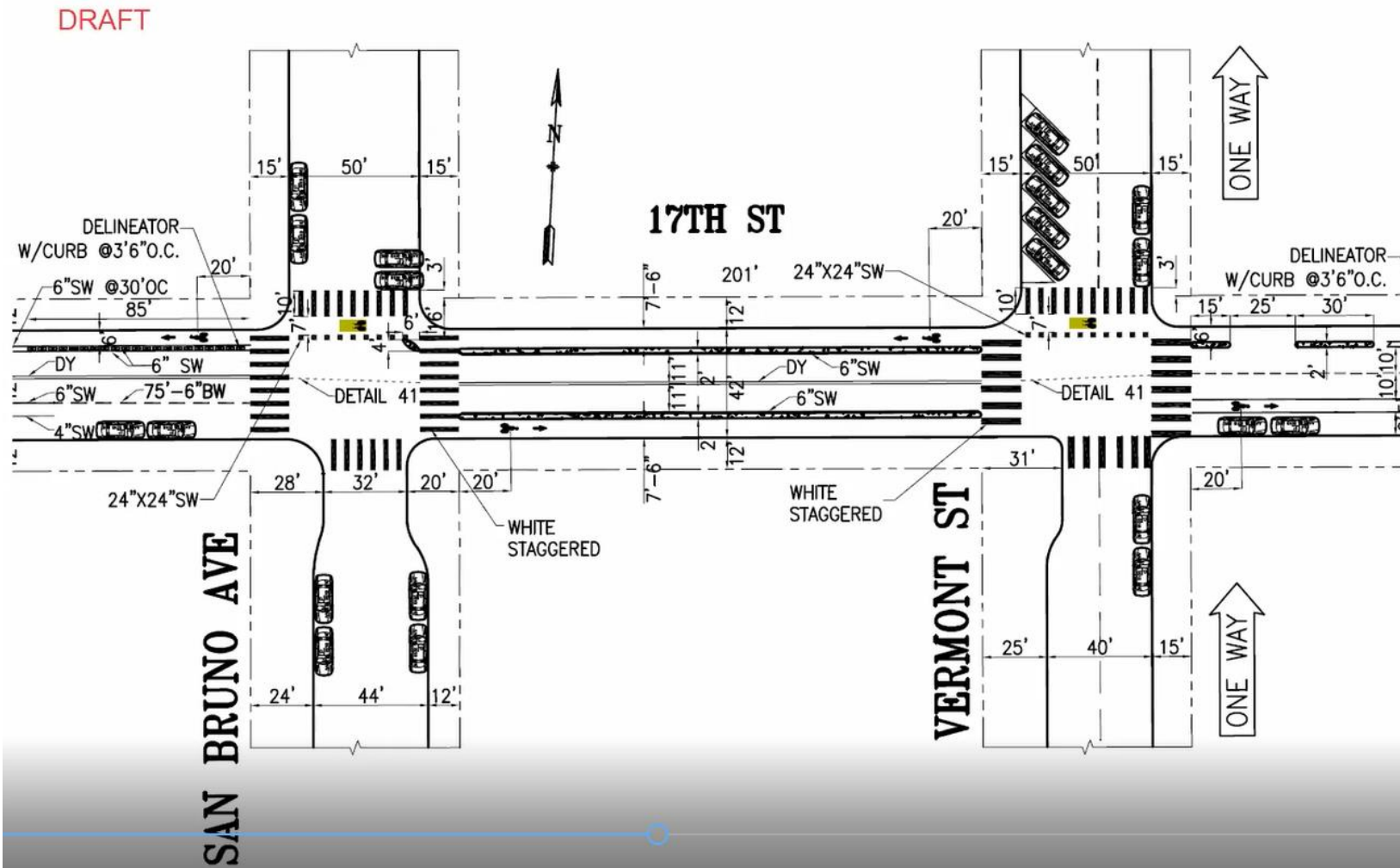
The total budget for the art enrichment is \$217,000 which includes design, fabrication, materials and the artist's fee which will be implemented by the selected artist in collaboration with current stakeholders (Caltrans, DPW, Dogpatch & NW Potrero GBD). Design expected to be completed by the end of June and project construction by the beginning of January 2021. Semifinalists paid \$2,500 for design.

Bike and Sidewalk safety improvements

Very Draft

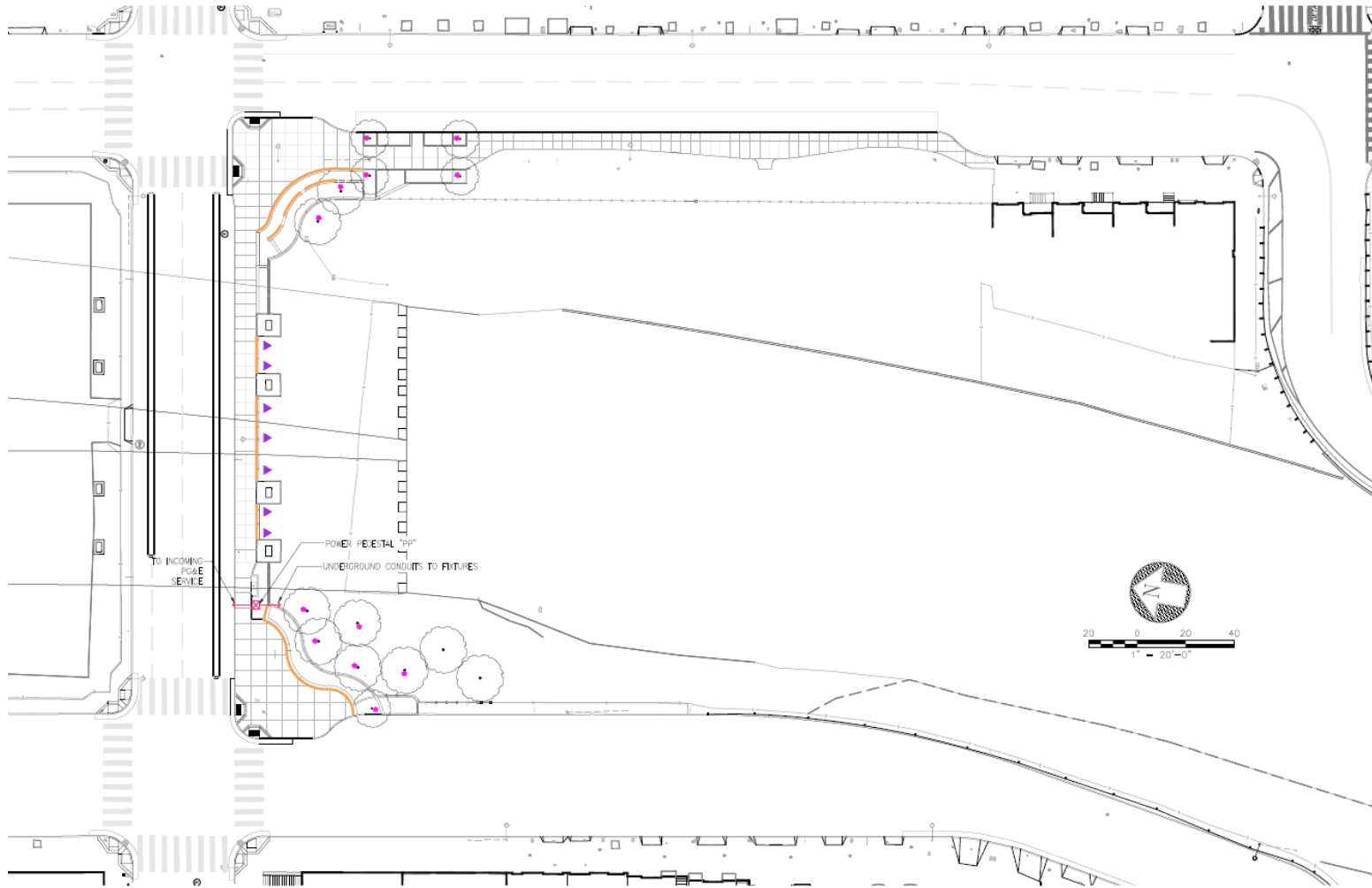
A screen copy from the
meeting 3/10

From PW, but only draft



Potrero Gateway Project

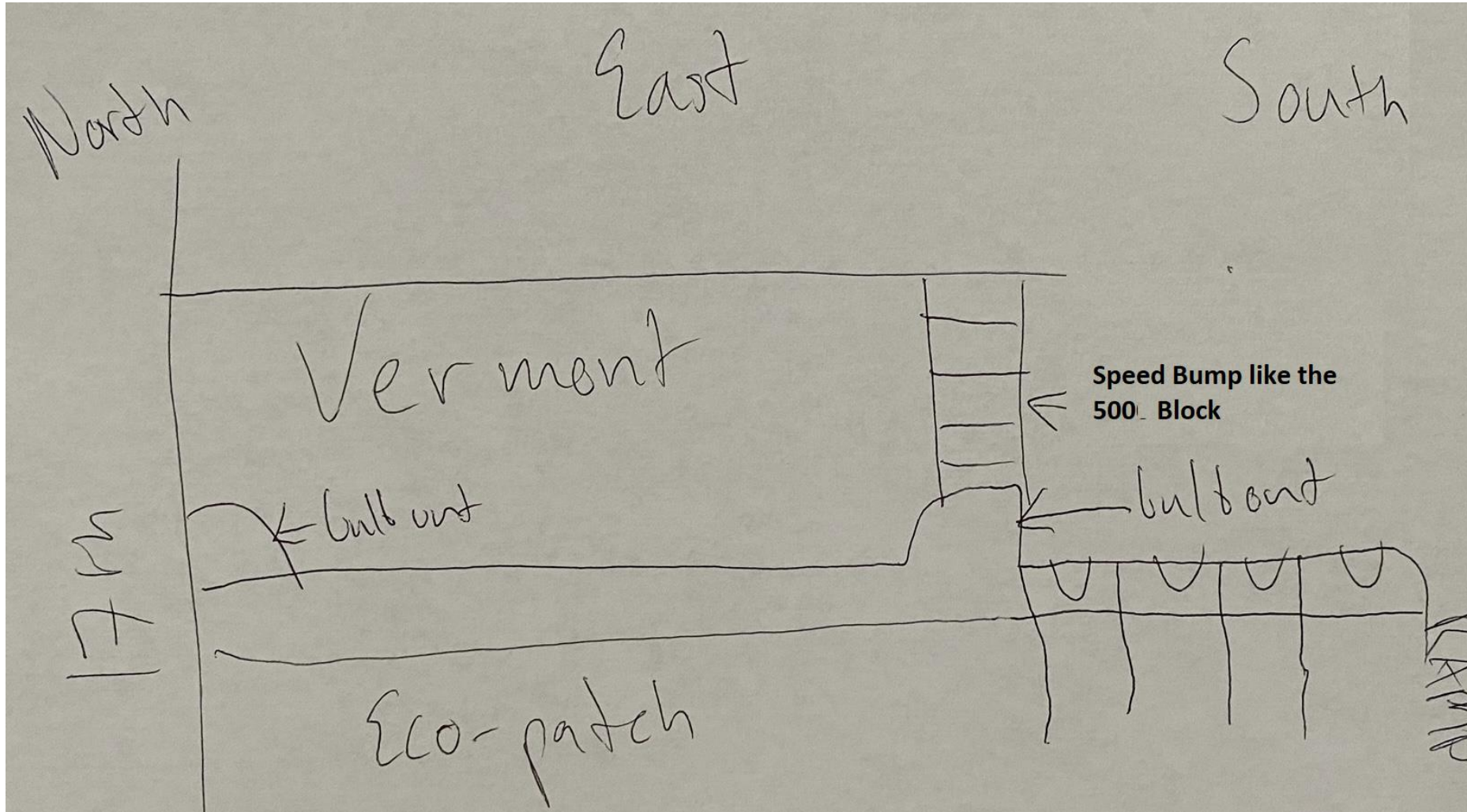
Phase 1 Scope



- 17th Street
- Vermont bulbout
- Vermont lane removal
- San Bruno bulbout
- Art integration

Potrero Gateway Project

35% Design Comments

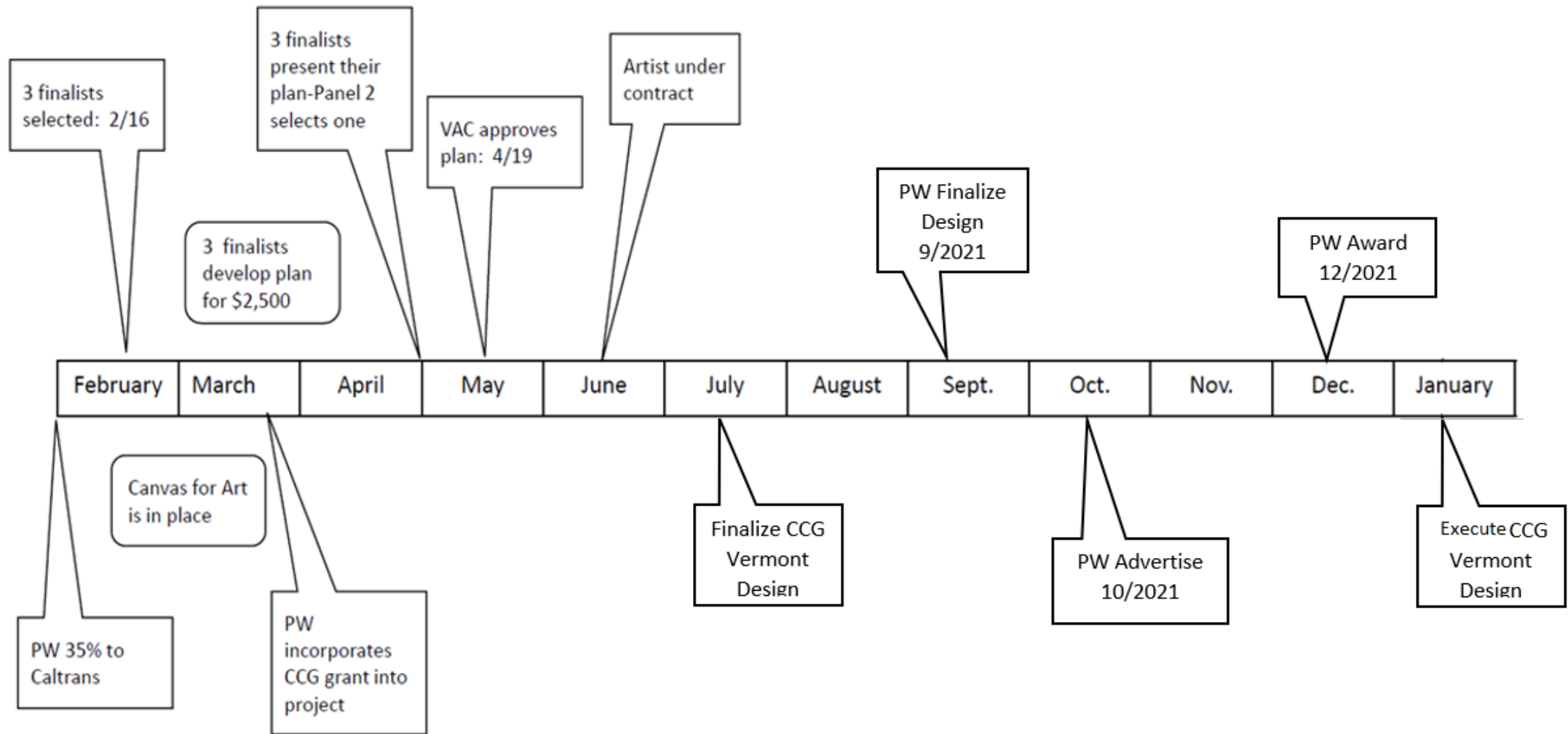


Kanwar's Explanation:

Add a bulbout and speed bump.

Potrero Gateway Project

High Level Schedule



Potrero Gateway Project

Eco-Patch Native Plant Test Garden

- Initiated with the help of volunteer landscapers : Field-Collective.land and Yerba Buena CNPS
- Volunteer work on the AAH land on Vermont Street
- Establishment costs funded by the GBD

Need to resolve

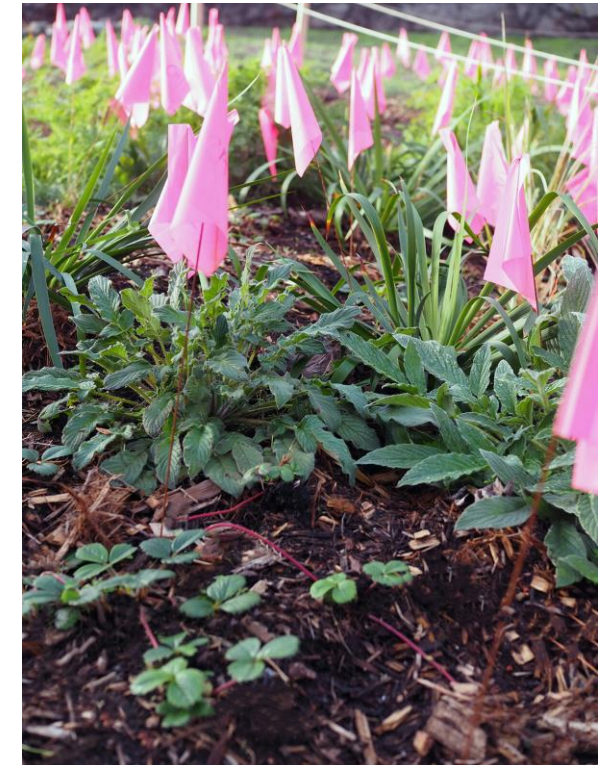
- Update AAH Permit
- Integrate with the Vermont Street CCH project
- Landscape Plan around the patch



Mulch and Compost



Solarization and planting



Plant Name Flags

Potrero Gateway Project

GBD EXPENSES - ACTUAL FY19-20	
Maintenance	52%
Park & Green Space	\$25,781
Repair/Supplies	117
Sidewalk & Public Realm	17,059
Volunteer hours applied to General Benefits	1,889
Sub-Total	\$44,847
Capital Improvement	12%
Capital Projects - Improvement	\$8,816
Volunteer hours applied to General Benefits	1,967
Sub-Total	\$10,782
Accountability, Transparency, and Citizen Services	20%
Administrative Services	\$11,428
Annual Election	1,066
Communications & Outreach	4,054
Events	485
Sub-Total	\$17,033
Operations and Contingency Reserves	16%
Administrative Services	\$10,935
Insurance	838
Office	577
Professional Services	1,461
Sub-Total	\$13,811
TOTAL EXPENSES	\$86,473

Maintenance and the NW Potrero Hill GBD Budget

FY12-20 Spent on Potrero Gateway

- Janitorial – Trash, Graffiti
- Landscape

Need to estimate maintenance cost

- Janitorial – Trash, Graffiti
- Landscape
- Art Repair

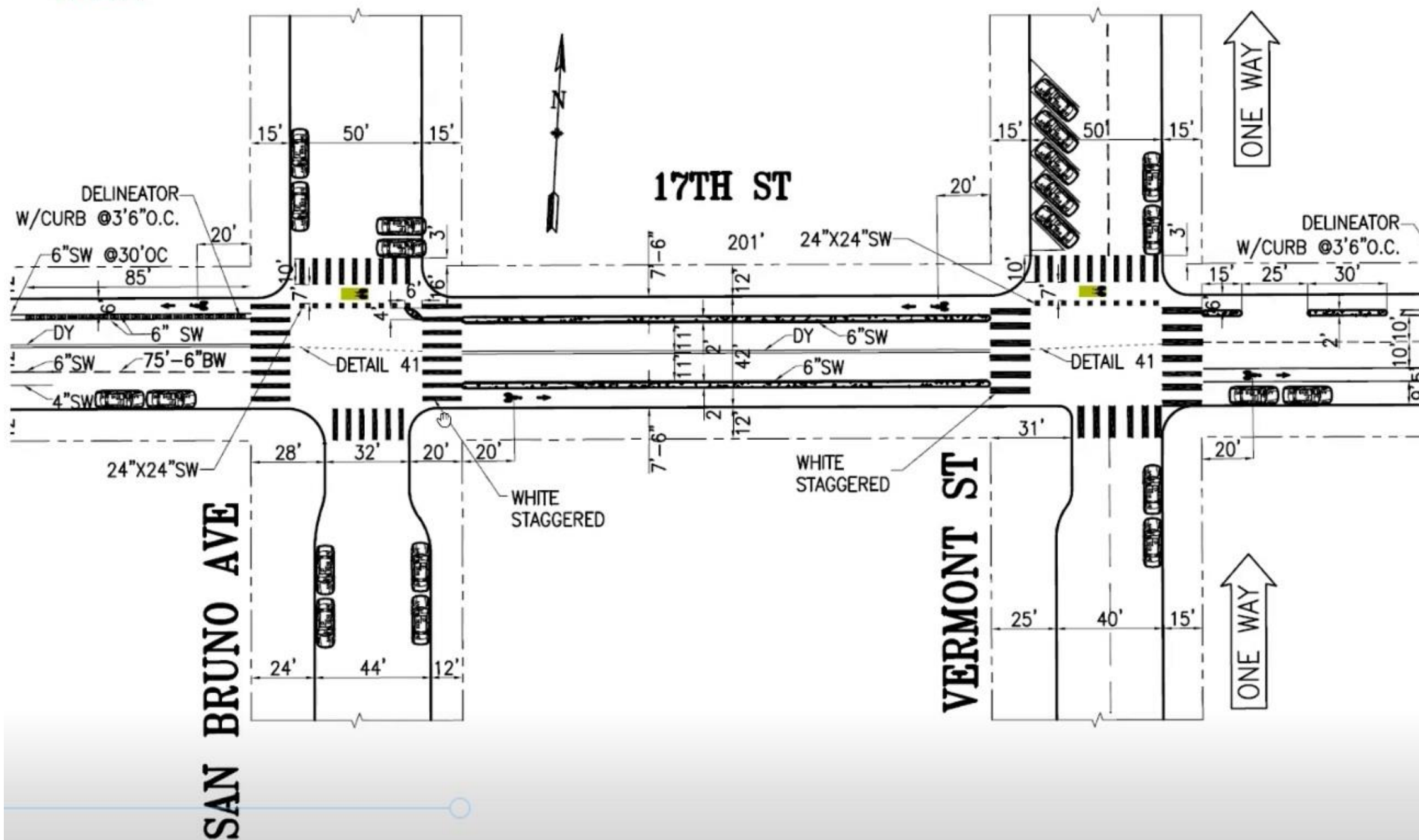
Need to Understand GBD Process for allocating funding for FY 22-23
(July 2022-June 2023)

Potrero Gateway Project

Action Items?

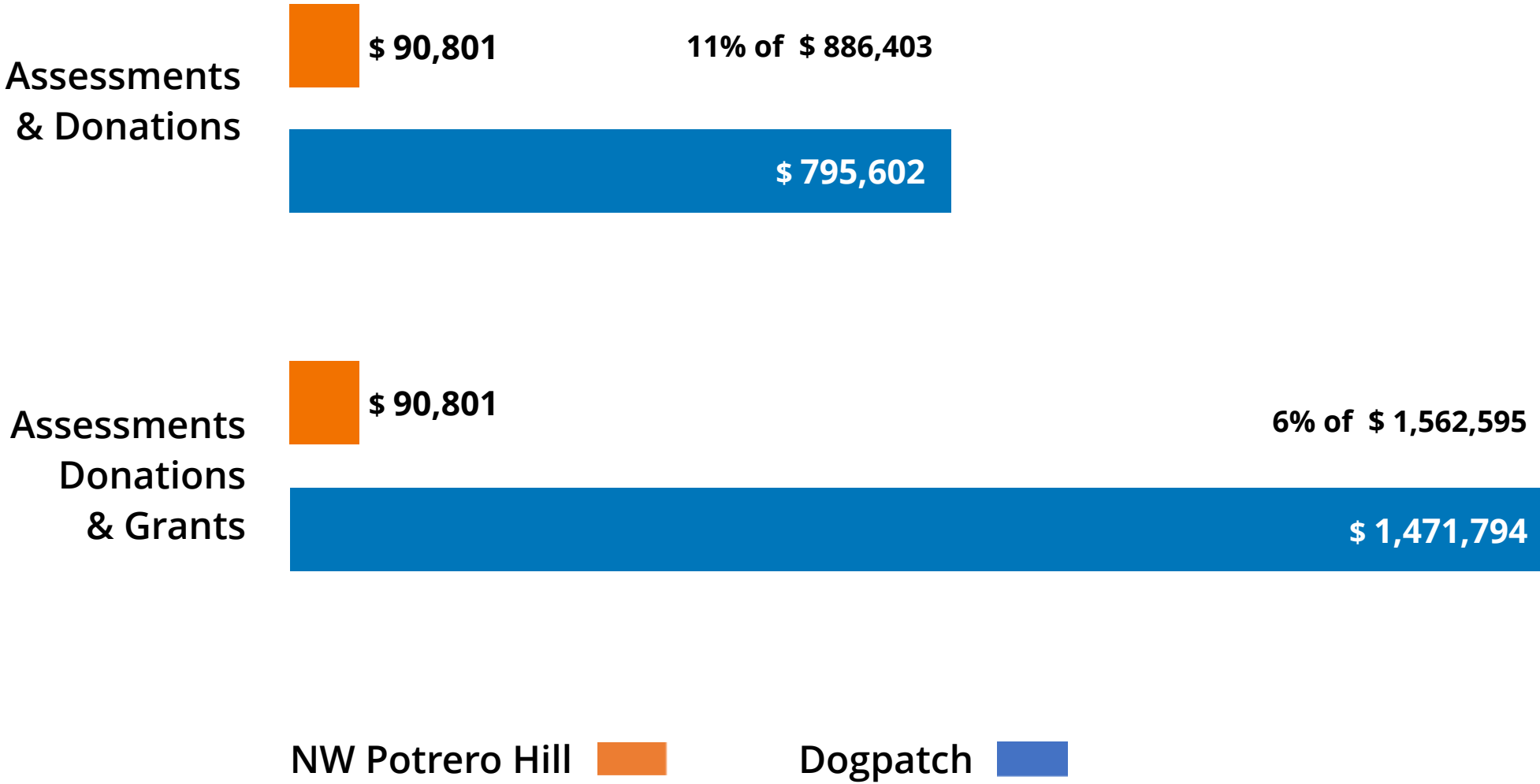


DRAFT

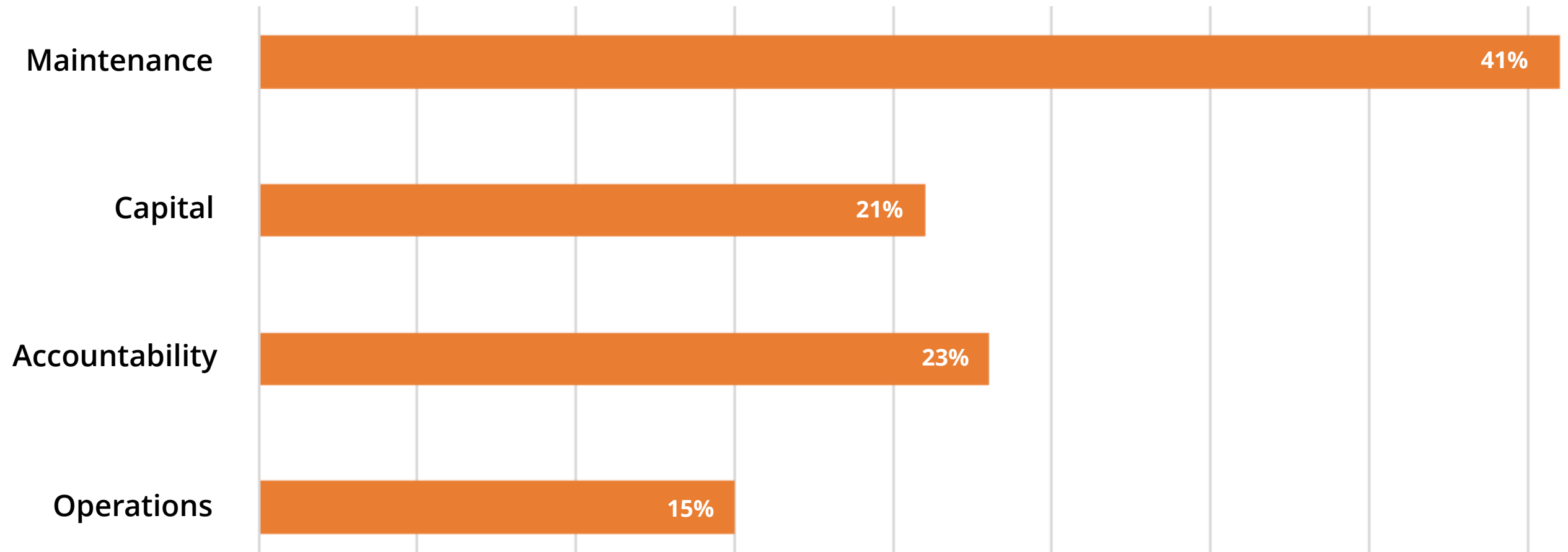




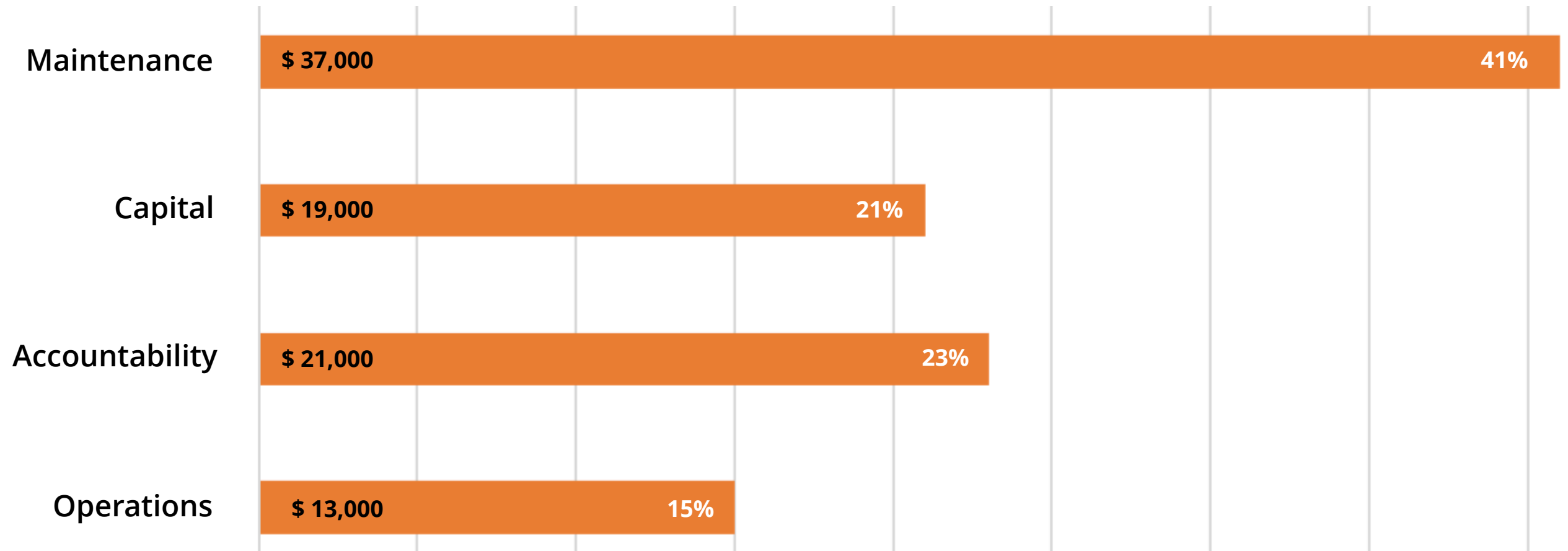
**Green Benefit District
Projected expenditures 2020/21**



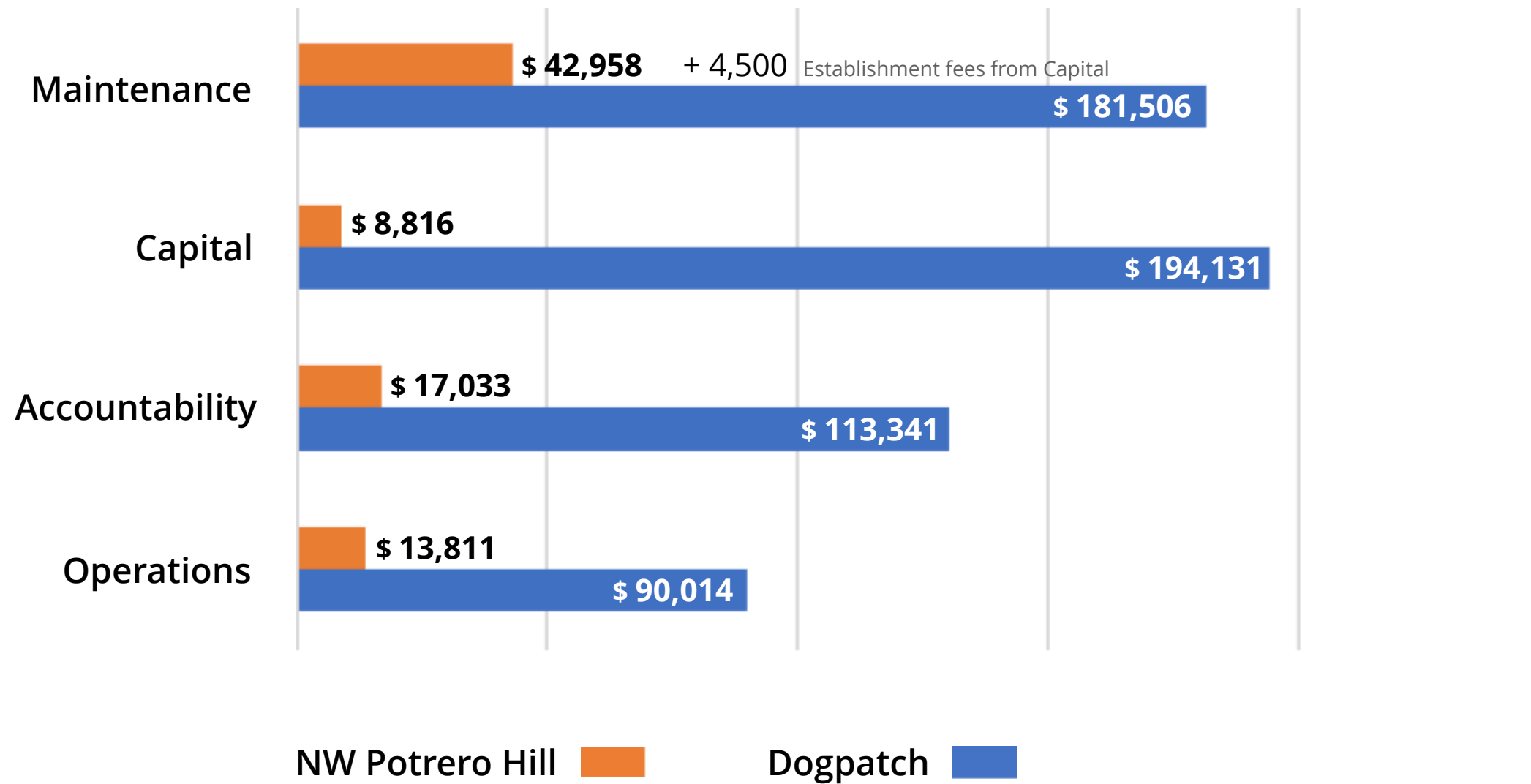
Green Benefit District NW Potrero Hill - Management Plan Target Budget Proportions



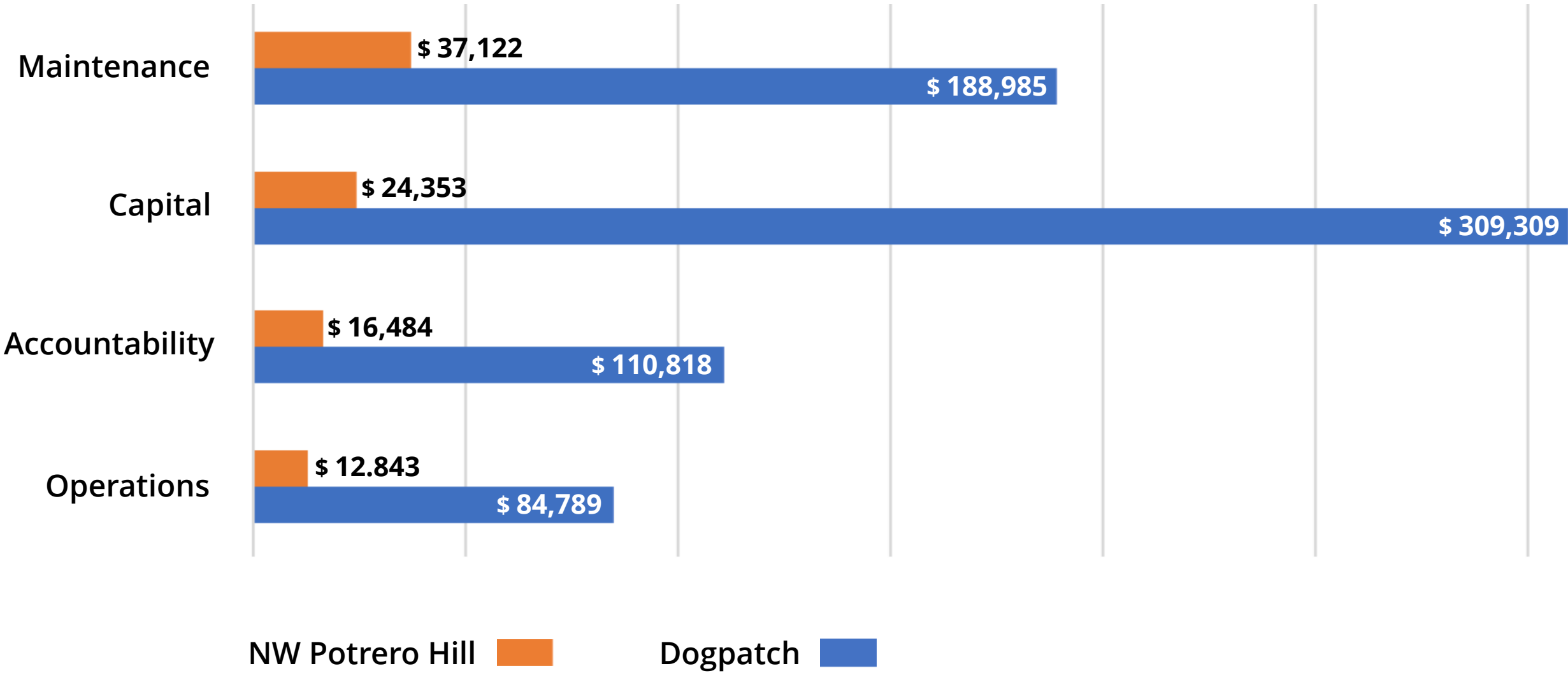
Green Benefit District NW Potrero Hill - Management Plan Target Budget Proportions



Green Benefit District Statement of Activity 2019/20



**Green Benefit District
Projected Expenses 2020/21**



Green Benefit District
NW Potrero Hill Maintenance & Capital Expenses 18/19 - 20/21

	18/19 Actual	19/20 Actual	20/21 Projection
Maintenance			
Landscape	24,332	25,781	13,371
Sidewalk & Public Realm	11,545	17,059	21,206
Supplies	109	117	312
TOTAL	35,986	42,957	34,889
Capital			
Establishment		4,500	3,434
Fallen Bridge	230		-
Benches	8,283	3,517	-
Gateway Loop			
Vermont Greenway		328	10,275
Misc Capital		472	2,500
TOTAL	8,513	8,817	16,209

Green Benefit District NW Potrero Hill Maintenance Schedule

	Mon	Tues	Wed	Thurs	Fri
PARKS/GREENSPACES					
Gateway	X			X	
Benches	X			X	
Fallen Bridge	X			X	
Pennsylvania	X		X		
22nd St Train Station	X		X		
Minnesota Grove		X		X	
Progress Park		X			X
25th St & Minnesota		X		X	
Tennessee, 23rd - 25th		X		X	
IM Scott		X		X	
Angel Alley			X		X
Woods Yard			X		X
Gears		X			X
Progress Dog Run			X		X
HOTSPOTS					
San Bruno	X			X	
20th St Indiana to 3rd	X		X		
Iowa St, 22nd to 25th		X		X	
22nd St, Penn to Illinois		X			X
SPECIAL CLEANING					
Graffiti abatement	X			X	
Power washing					X (1x Mo)
INSPECTION & SPOT CLEANING					
All Potrero Hill	X			X	
North Dogpatch		X	X		X
Central Dogpatch		X	X		X
South Dogpatch		X	X		X

X Landscape & Cleaning

X Cleaning only

Green Benefit District NW Potrero Hill Sidewalk & Public Realm Maintenance 2020/21

	Crew	Hours	Total HRS	Annual Cost	Annual		\$114,340
MONDAY					Monthly		\$9,529
Dogpatch	2	2.0	4	\$10,395			
NW Potrero Hill	2	2.0	4	\$10,395	Rates	Rate	Monthly
			8	\$20,789	Foreman	\$55	\$4,983
					Laborer	\$38	\$3,291
TUESDAY					Dump Fees		\$642
Dogpatch	2	4.0	8	\$20,789	Equipment , Transportation		\$613
			8	\$20,789			\$9,529
					Annual Distribution		
WEDNESDAY					Dogpatch		\$93,551
Dogpatch	2	4.0	8	\$20,789	NW Potrero Hill		\$20,789
			8	\$20,789			
THURSDAY							
Dogpatch	2	2.0	4	\$10,395	NW Potrero Hill		
NW Potrero Hill	2	2.0	4	\$10,395	\$1,700 per month for 35 hrs + fuel, dump fees, etc.		
			8	\$20,789			
FRIDAY							
Dogpatch	2	4.0	8	\$20,789			
			8	\$20,789			
STEAM CLEANING							
Dogpatch	1	4.0	4	\$10,395			
NW Potrero Hill	1	0.0	0	\$0			
			4	\$10,395			

Green Benefit District NW Potrero Hill Landscape Maintenance 2020/21

	Crew	Hours	Total HRS	Annual Cost			
MONDAY					Annual		\$161,304
Gateway	3	1.5	4.5	\$10,081	Monthly		\$13,442
Benches	2	1.0	2	\$4,481			
Fallen Bridge	1	1.0	1	\$2,240	Rates	Rate	Monthly
Pennsylvania	3	1.5	4.5	\$10,081	Foreman	\$47	\$4,888
22nd St Train Station	3	1.0	3	\$6,721	Leader	\$37	\$3,848
Iowa, 20th, etc.	3	3.0	9	\$20,163	Laborer	\$29	\$3,016
			24	\$53,768	Equipment , Fuel, Dump Fees		\$1,690
							\$13,442
THURSDAY					Annual Distribution		
Minnesota Grove	3	4.0	12	\$26,884	Dogpatch		\$144,500
25th St & Minnesota patch	3	1.0	3	\$6,721	NW Potrero Hill		\$16,804
Tennessee	3	1.5	4.5	\$10,081			
IM Scott	3	1.5	4.5	\$10,081			
			24	\$53,768			
					NW Potrero Hill		
FRIDAY					\$1,400 per month for 32 hrs + fuel, dump fees, etc.		
Angel Alley	3	1.0	3	\$6,721			
Woods Yard	3	0.5	1.5	\$3,360			
Gears	3	2.0	6	\$13,442			
Progress Dog Run	3	0.5	1.5	\$3,360			
Progress Park	3	4.0	12	\$26,884			
			24	\$53,768			

