



Steering Committee Meeting  
April 23, 2021 3pm-4pm  
ZOOM

**Steering Committee Attending:** JR Eppler, Sheldon Trimble, Kanwar Kelley, Steven Solomon, Jean Bogiages

**Guests:** Mary Gooseff, Albert Sandoval (San Bruno Ave)

**PW:** Trent Tieger, PW Manager, Jasmine Kaw, Landscape, Claudia Rodriquez, Landscape

**Meeting Objective:** Review San Bruno Avenue Master Plan Draft Diagrams with the San Bruno Avenue neighbors for input, noting that this is mostly about parking, sidewalks and curbs. Landscape solutions come later.

### Meeting Minutes

The meeting started at 3:04 with Concept Diagram Draft Option 1. Jasmine explained that the Phase 1 bulbout would need to be a little bigger to meet with the existing sidewalk for accessibility reasons. The existing sidewalk is about 3-4 ft and would be increased to 6ft. Option 1 added a sidewalk/plaza area at the south end of the perpendicular parking. There were questions about the size of the road at both ends of the sidewalk/plaza. Why lose 2 feet at the north end? Is visibility bad driving north for the car near the plaza when backing out?

The drawing shows no parallel parking on the east side of San Bruno. Removing parallel parking at the corner is an idea the neighborhood likes. They did not get a majority for the 2-hr. parking mostly because of the cost. Some neighbors have more than one car.

Option 2, which is the simplest, also included the removal of parallel parking on the east side and was received positively.

Option 3 included the idea of street trees. It was noted that this was something the GBD could work on. It also included a bulbout on the west side of Vermont which would remove marking, which may be a negative. The new plaza/greening area could possibly include raised gardens or boulders to prevent camping. It also could be an area for a green wall experiment. Mary asked if vines could be grown on any fencing that replaces the chain-link. Jasmine noted that maintenance would have to be done by GBD or neighbors. Some version of Caltrans fence would be installed which is stringer than the existing chainlink.

### Meeting Summary

Jasmine summarized what she heard:

- Adding the white strip for accessibility to the phase 1 bulbout was fine.
- The mid-block screening has potential, but concern about camping needs to be addressed. Don't remove it.
- If the neighbors want street trees on the west side, that would be good screening.
- Removing parallel parking on the east side would be good but need to determine how much.
- Keep or extend the perpendicular parkin on the east side.

Jasmine and Claudia are working on the Phase 1 65% Design now but will come back with an update version for Phase 2 San Bruno Concept Design.



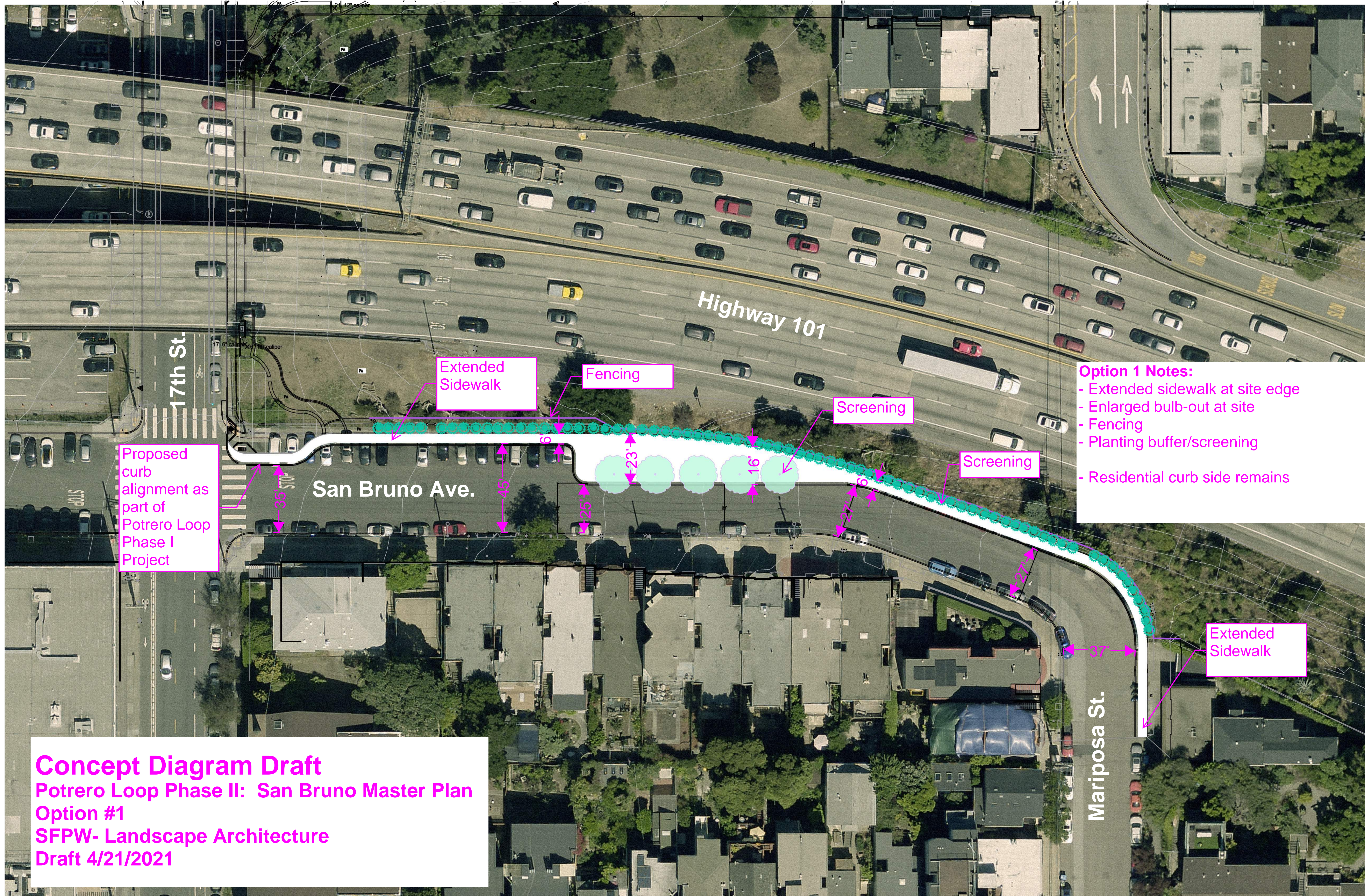
A couple of Phase 1 questions were raised.

Jasmine asked if replacing the Australian Tea trees with trees with trunks, like Oak trees would be OK for Phase 1. Jean and May agreed.

Who pays for water was asked. Jean noted that Public Works pays for the Benches water and for Dogpatch water at Angel Alley, Progress Park, Progress Dog Park and 22<sup>nd</sup> Street sidewalk gardens. SFMTA pays for water at MUNI Park. RPD pays for water at Fallen Bridge Park. Sheldon pointed out that Caltrans installed water at the Mariposa corner 10 years ago after a fire to the south, Jean said she would send a photo of the installation to Jasmine.

Jean noted that a number of San Bruno neighbors did not make the meeting because of work. Jean said she would follow up with the San Bruno neighbors that did not make the meeting.  
The meeting ended at 4:10.





Proposed curb alignment as part of Potrero Loop Phase I Project

Extended Sidewalk

Fencing

Screening

Screening

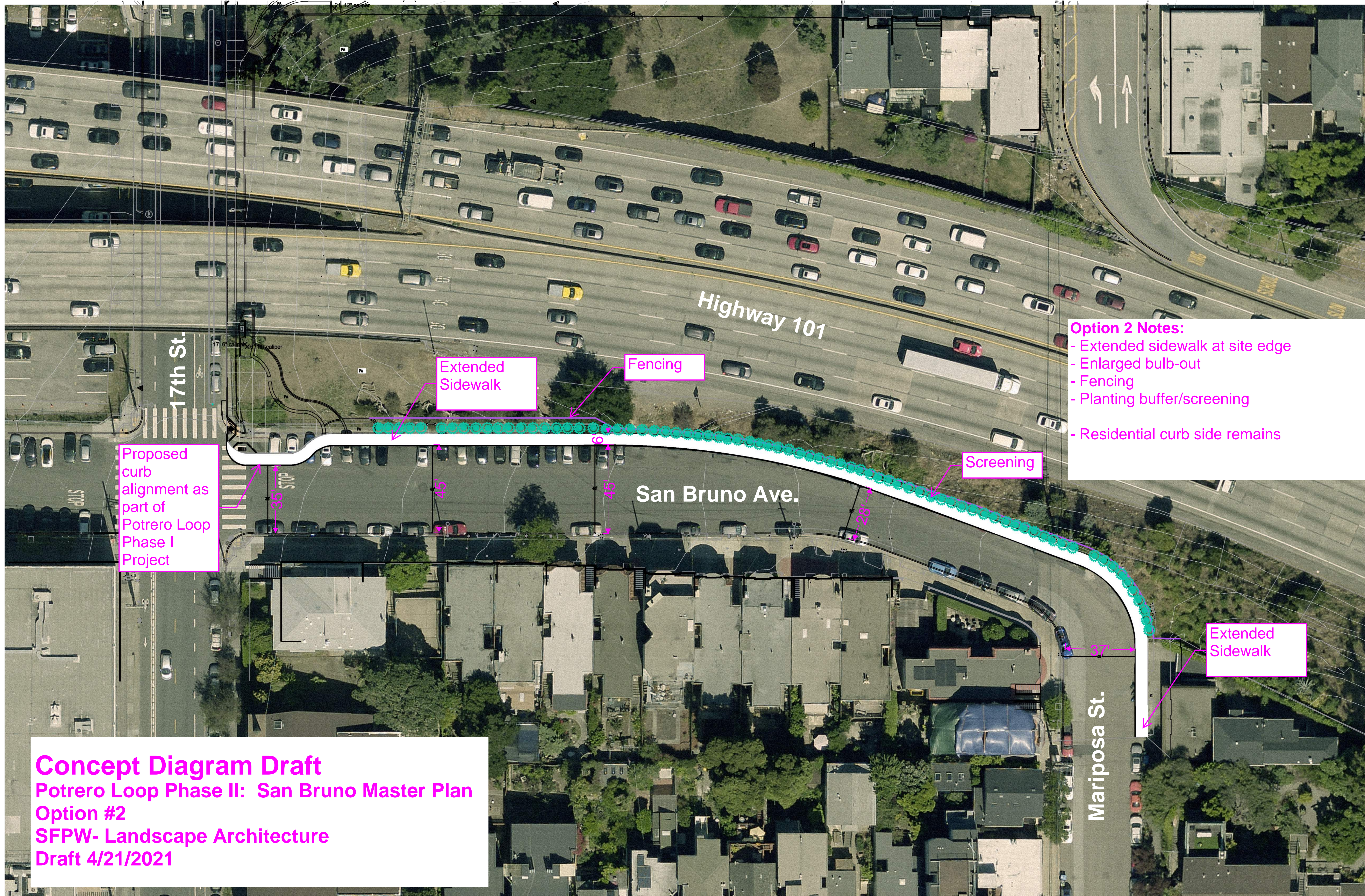
**Option 1 Notes:**

- Extended sidewalk at site edge
- Enlarged bulb-out at site
- Fencing
- Planting buffer/screening
- Residential curb side remains

Extended Sidewalk

**Concept Diagram Draft**  
Potrero Loop Phase II: San Bruno Master Plan  
Option #1  
SFPW- Landscape Architecture  
Draft 4/21/2021





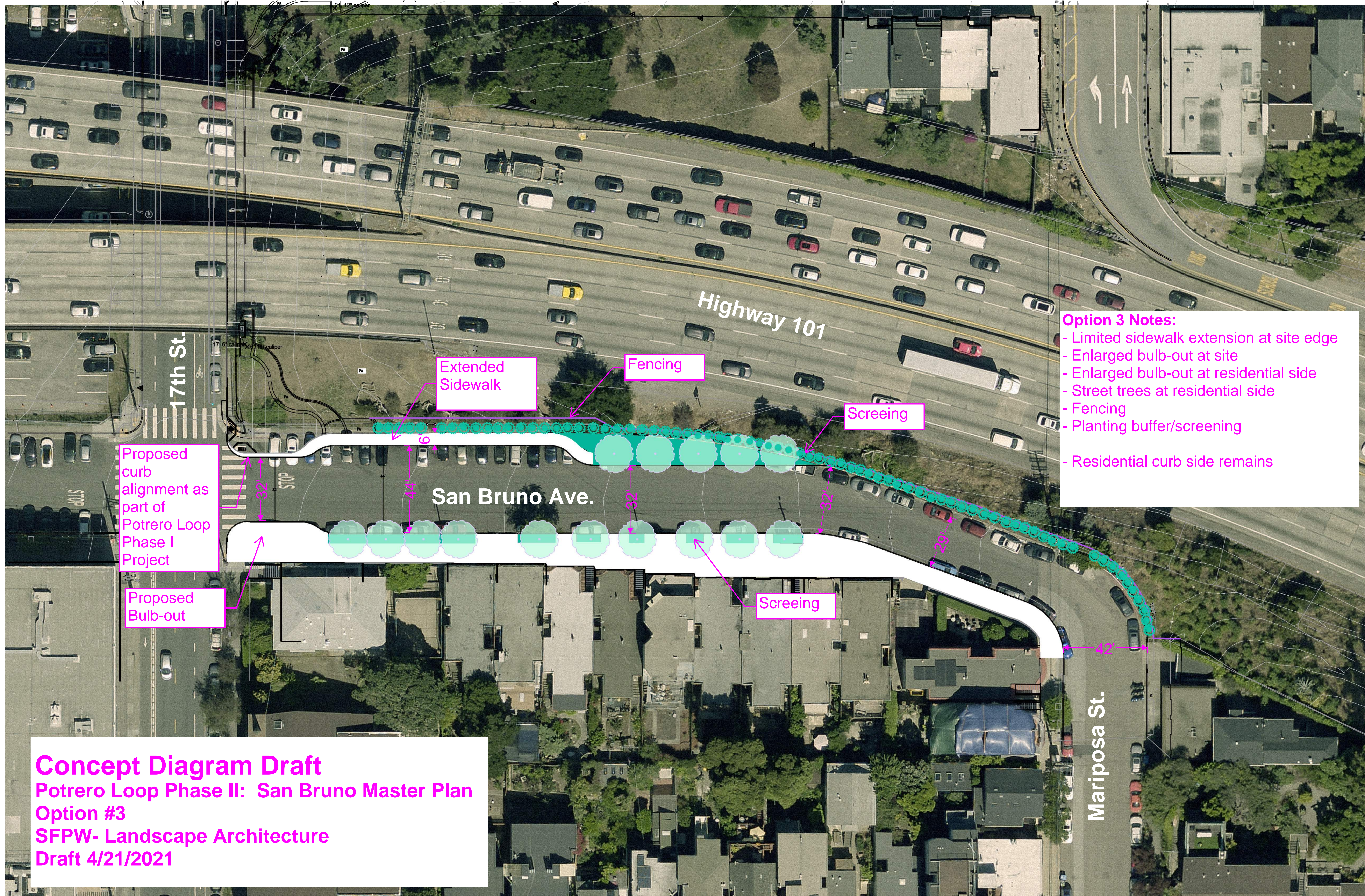
**Option 2 Notes:**

- Extended sidewalk at site edge
- Enlarged bulb-out
- Fencing
- Planting buffer/screening
- Residential curb side remains

Proposed curb alignment as part of Potrero Loop Phase I Project

**Concept Diagram Draft**  
Potrero Loop Phase II: San Bruno Master Plan  
Option #2  
SFPW- Landscape Architecture  
Draft 4/21/2021





- Option 3 Notes:**
- Limited sidewalk extension at site edge
  - Enlarged bulb-out at site
  - Enlarged bulb-out at residential side
  - Street trees at residential side
  - Fencing
  - Planting buffer/screening
  - Residential curb side remains

**Concept Diagram Draft**  
Potrero Loop Phase II: San Bruno Master Plan  
Option #3  
SFPW- Landscape Architecture  
Draft 4/21/2021