



Steering Committee Meeting  
February 2 , 2022  
ZOOM 4pm-5pm

**Steering Committee:** Dianne Bates, J JR Eppler, Michael Kerbow, Sheldon Trimble, Kanwar Kelley, Steven Solomon, Patricia Fonseca, Peter Belden

**Absent:** , JD Beltran

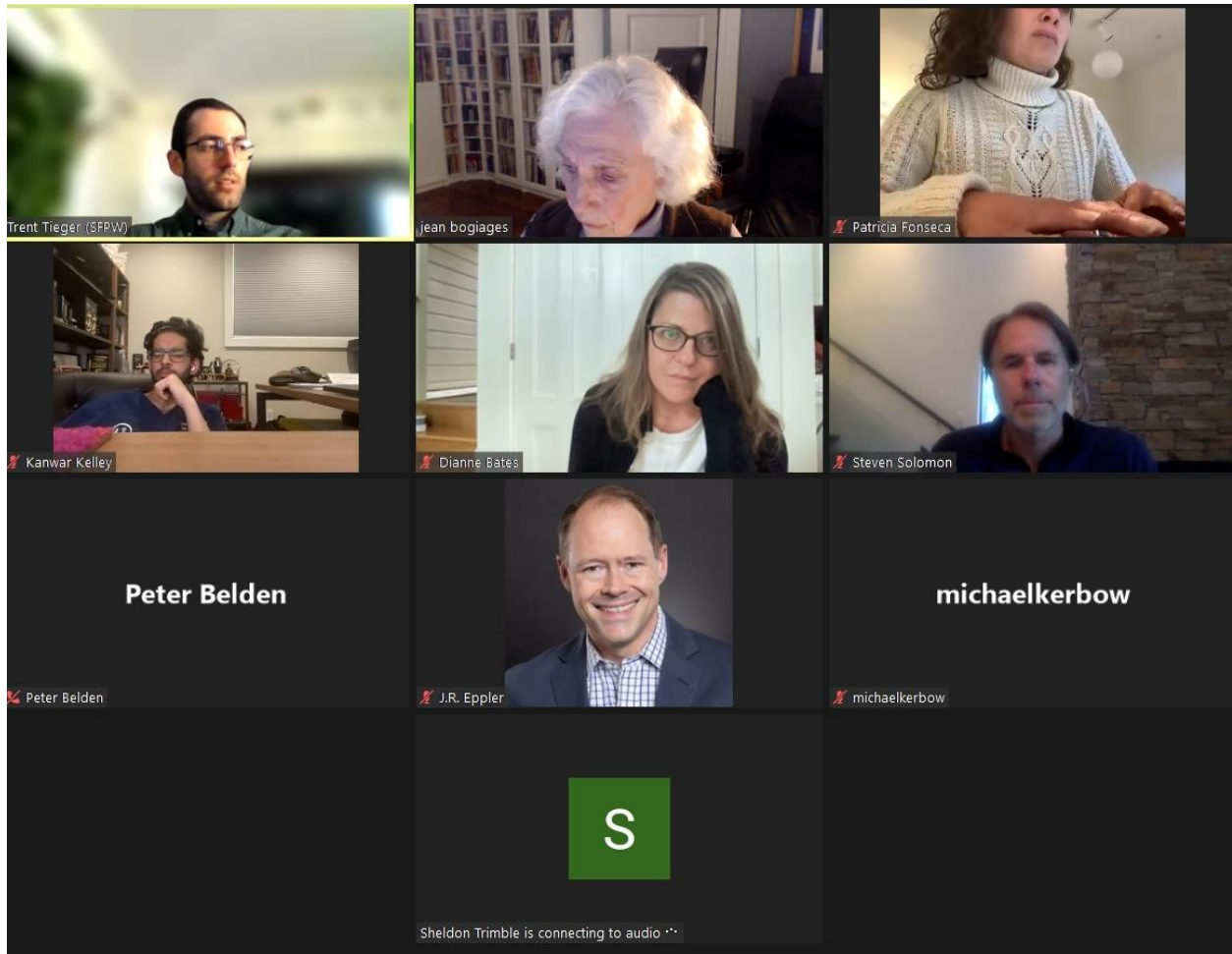
**PW:** Trent Tieger, PW Manager

Notes

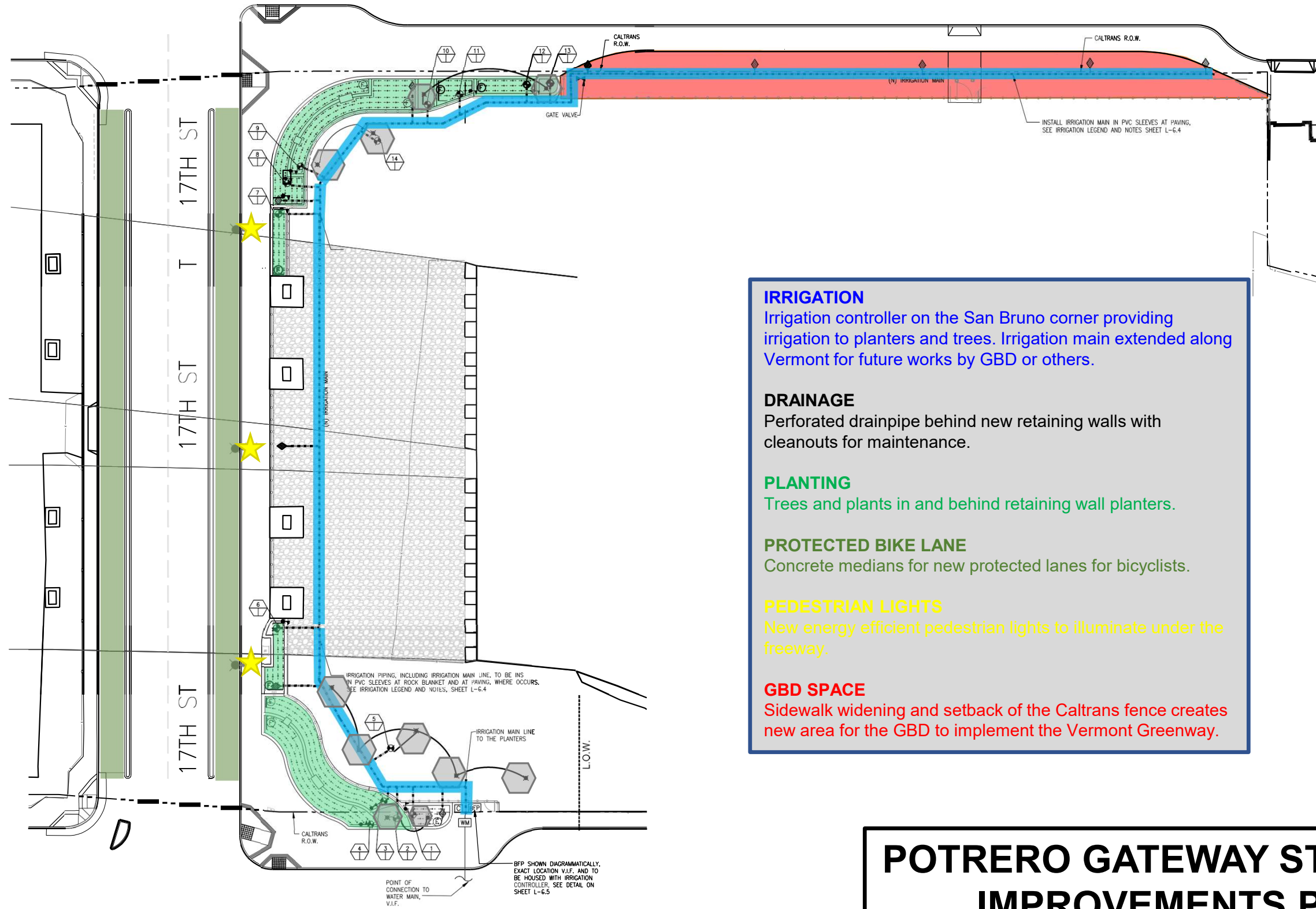
1. Attached are 5 pages from the bid set, that address:
  - a. Bike lane improvements that managed to get into the bid
  - b. The landscape elements including the plant selection and neighborhood involvement in planting. Note that Trent is pushing for a neighborhood planting event for the bulbouts.
2. Potrero Gateway Update Topics
  - a. How we are connecting the retaining wall texture, Art work, Caltrans paint job and fencing to provide a pleasing visual pallet - This is still work to be done.
  - b. Current Budget not presented
  - c. Current schedule - Construction may start in May-July.
  - d. Update on San Bruno Avenue- There is money in the budget to complete the design exercise for San Bruno Avenue
  - e. Status of the Adopt-a-Highway permit vs the 2016 Public Works maintenance agreement with Caltrans properties? PW is only encroaching on the area in which they are doing construction.
  - f. SFAC Project status - *The artists are currently working on the subcontract agreement with their engineer. As soon as that is done, we will begin the process of creating shop drawings, construction documents, and calculation packets. Some adjustments to the sculptural forms may take place as a result of engineering.*
3. Continuing Work - The Steering Committee will continue to review the design and construction progress. Next will be Jasmine's update on the San Bruno Avenue design option. We will need to find funding for constructions.



Meeting Attendance:



VERMONT ST.



**IRRIGATION**

Irrigation controller on the San Bruno corner providing irrigation to planters and trees. Irrigation main extended along Vermont for future works by GBD or others.

**DRAINAGE**

Perforated drainpipe behind new retaining walls with cleanouts for maintenance.

**PLANTING**

Trees and plants in and behind retaining wall planters.

**PROTECTED BIKE LANE**

Concrete medians for new protected lanes for bicyclists.

**PEDESTRIAN LIGHTS**

New energy efficient pedestrian lights to illuminate under the freeway.

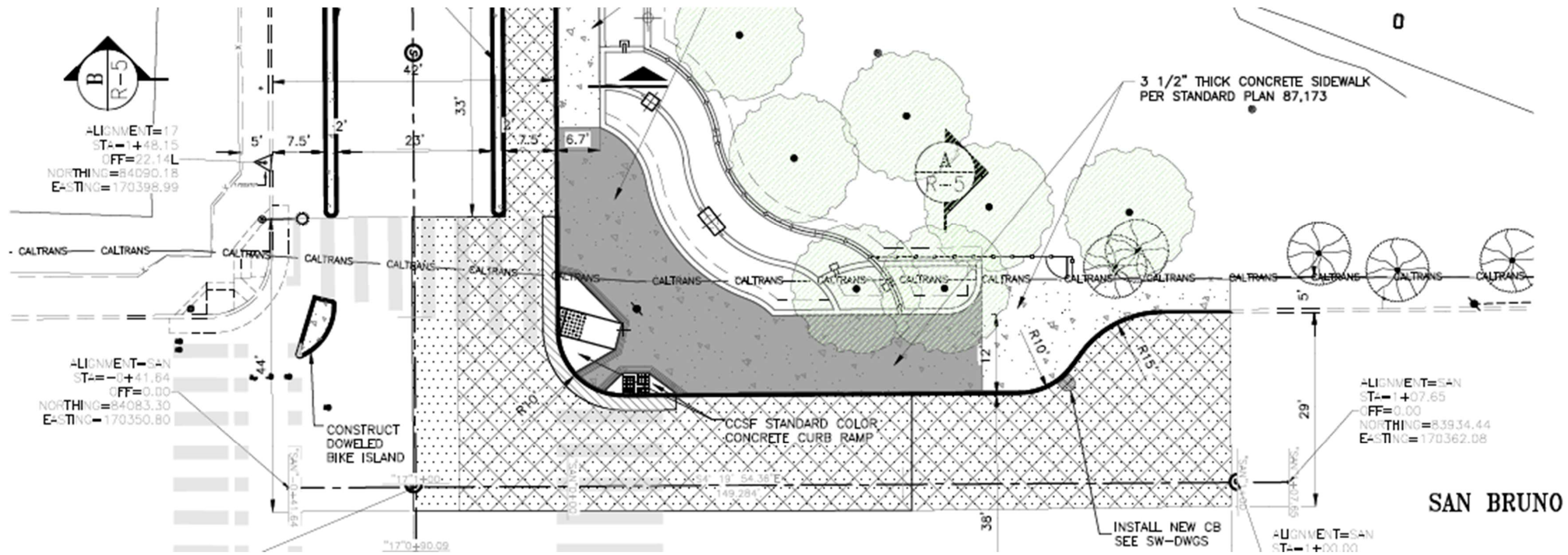
**GBD SPACE**

Sidewalk widening and setback of the Caltrans fence creates new area for the GBD to implement the Vermont Greenway.

**POTRERO GATEWAY STREETSCAPE IMPROVEMENTS PROJECT**



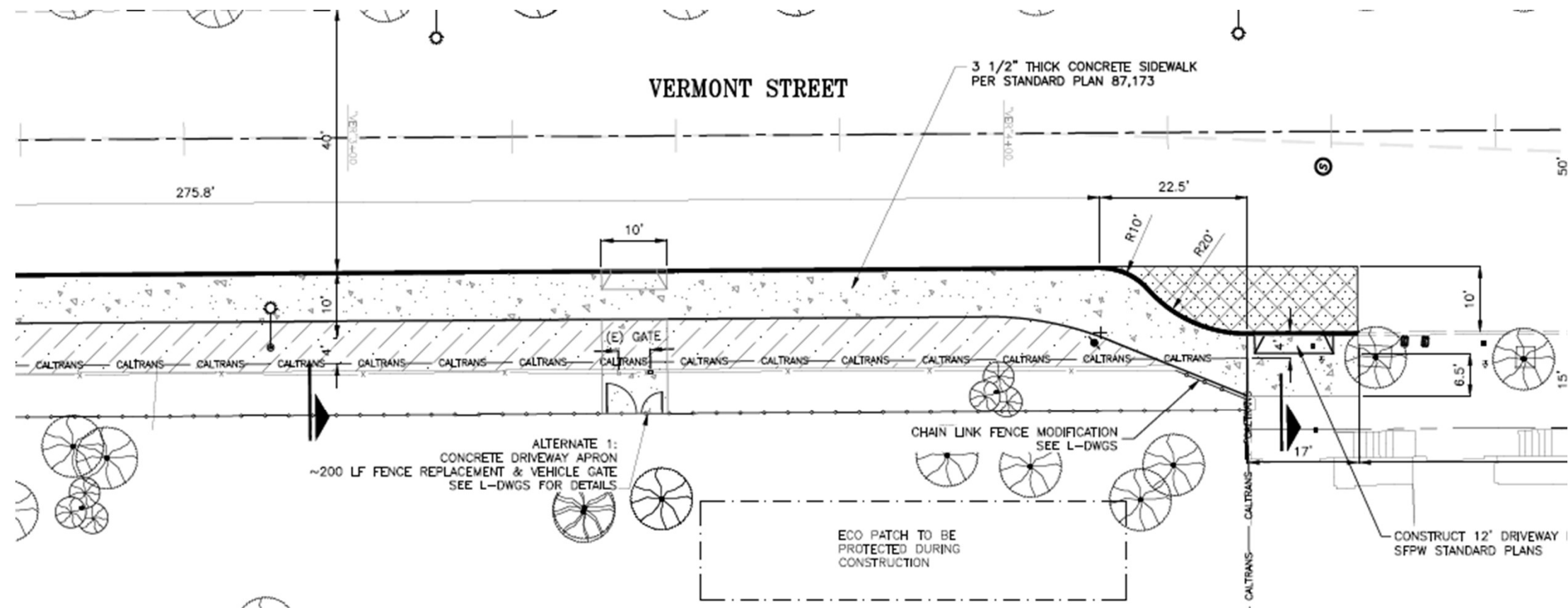
# San Bruno Corner



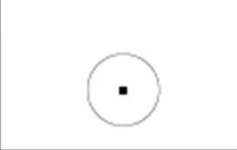




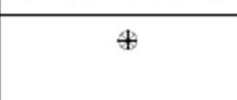


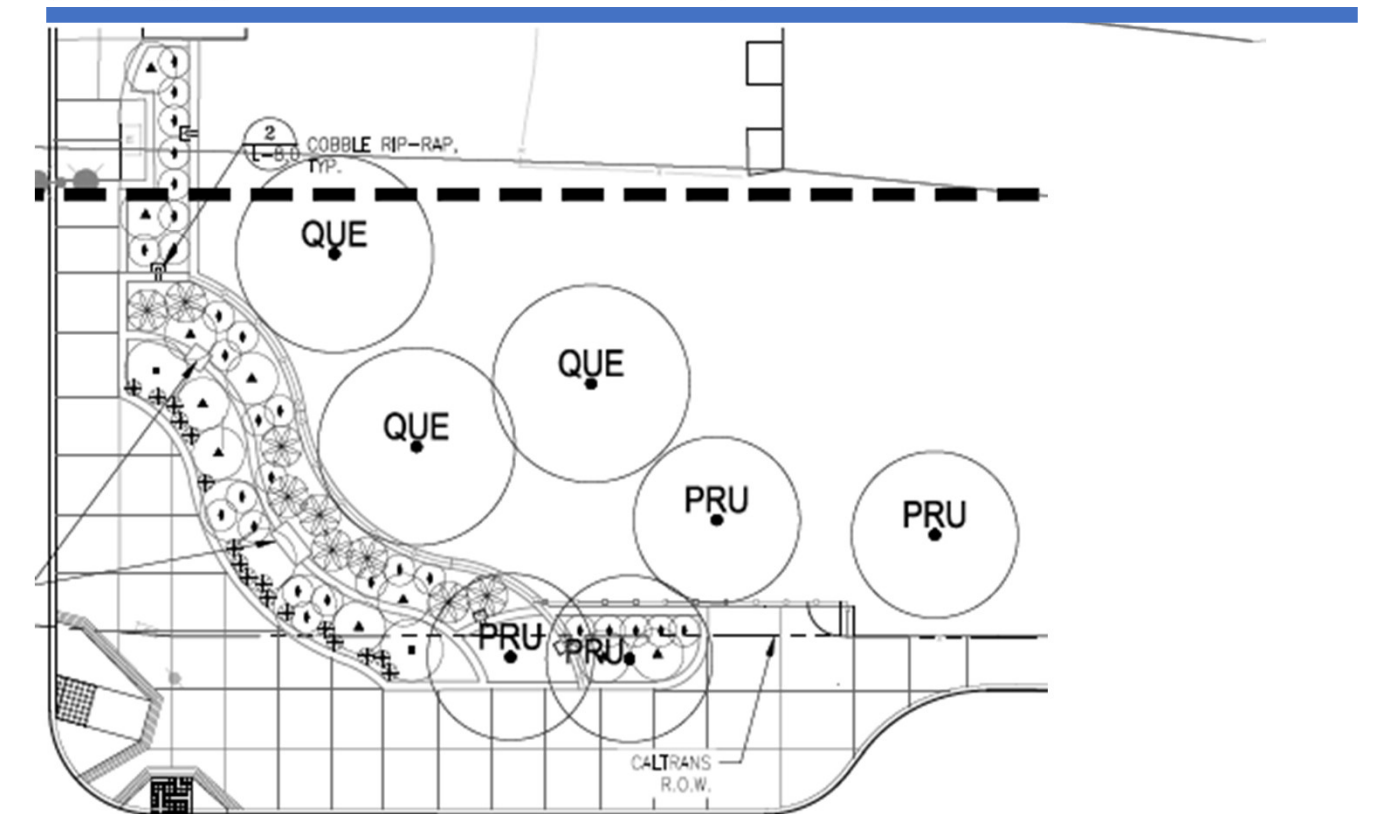
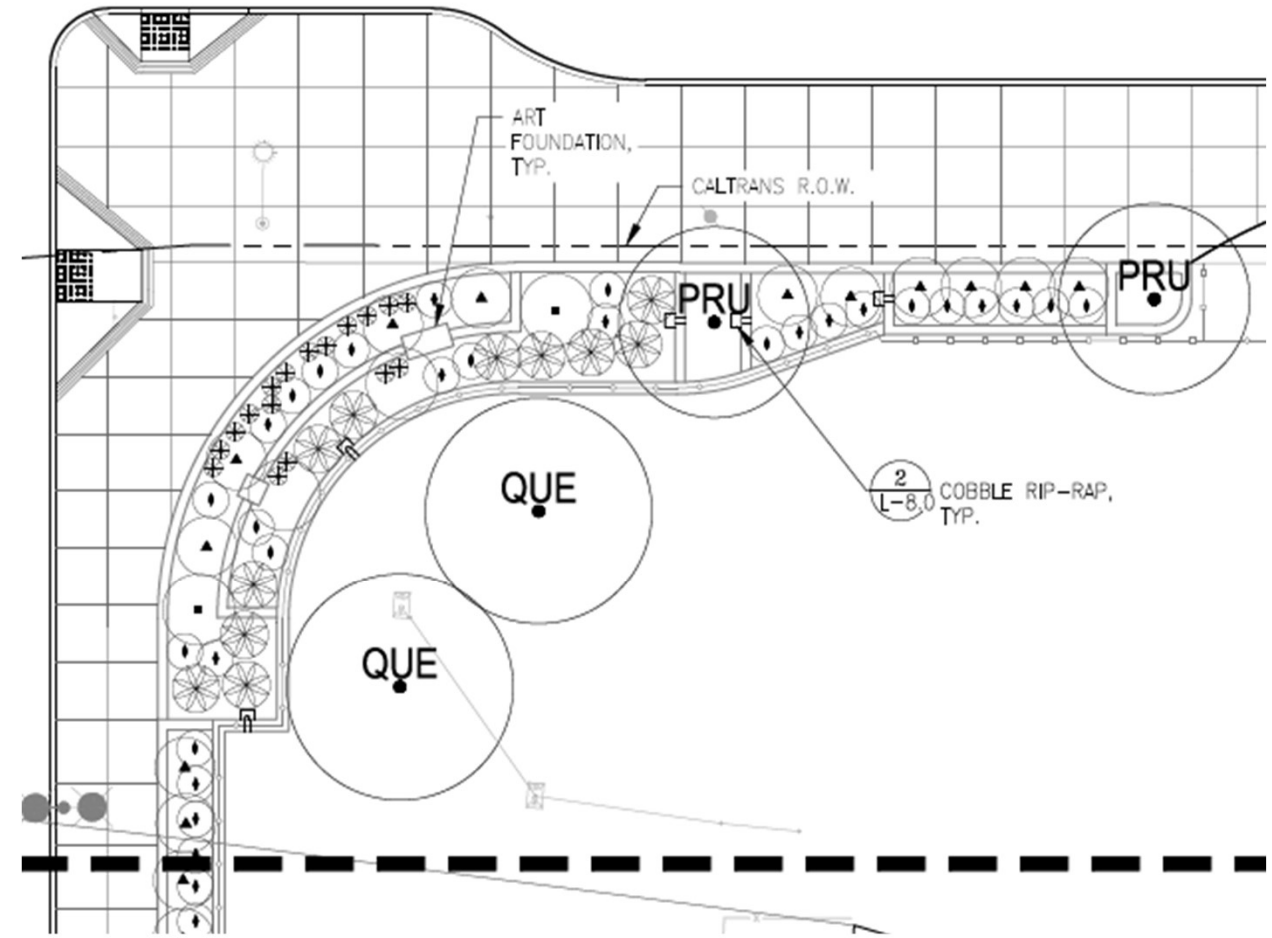




# Vermont Mid-Block



SYMBOL	QTY.	SCIENTIFIC NAME	COMMON NAME
<b>TREES</b>			
	5	QUERCUS AGRIFOLIA	COAST LIVE OAK
	6	PRUNUS ILICIFOLIA SSP. ILICIFOLIA	HOLLYLEAF CHERRY
<b>SHRUBS</b>			
	5	CEANOTHUS THYRSIFLORUS VAR. THYRSIFLORUS 'LOUIS EDMUNDS'	CEANOTHUS THYRSIFLORUS VAR. THYRSIFLORUS 'LOUIS EDMUNDS'
	5	BACCHARIS PILULARIS "PIGEON POINT"	DWARF COYOTE BRUSH
	25	ARCTOSTAPHYLOS UVA URSI "POINT REYES"	POINT REYES BEARBERRY
	20	LUPINUS PROPINQUUSI	BLUE BUSH LUPINE
	60	MIMULUS AURANTIACUS 'PT. MOLATE'	MONKEY FLOWER
<b>GROUNDCOVERS</b>			
	35	ERIGERON GLAUCUS 'WAYNE RODERICK'	SEASIDE DAISY



# Potrero Gateway Project - Update 2-2-2022

## Summary

The [Potrero Gateway](#) Steering Committee has been working with Public Works (PW) for that last two years. PW provided manager (Trent Tieger) and PW designers. December 2021 the Phase 1 design was approved by Caltrans and sent out to contractors for bids. In January PW presented an overview to the Dogpatch and NW Potrero Hill Green Benefit District (GBD) board of directors. At that meeting a maintenance Memorandum of Understanding (MOU) was approved by the GBD board.

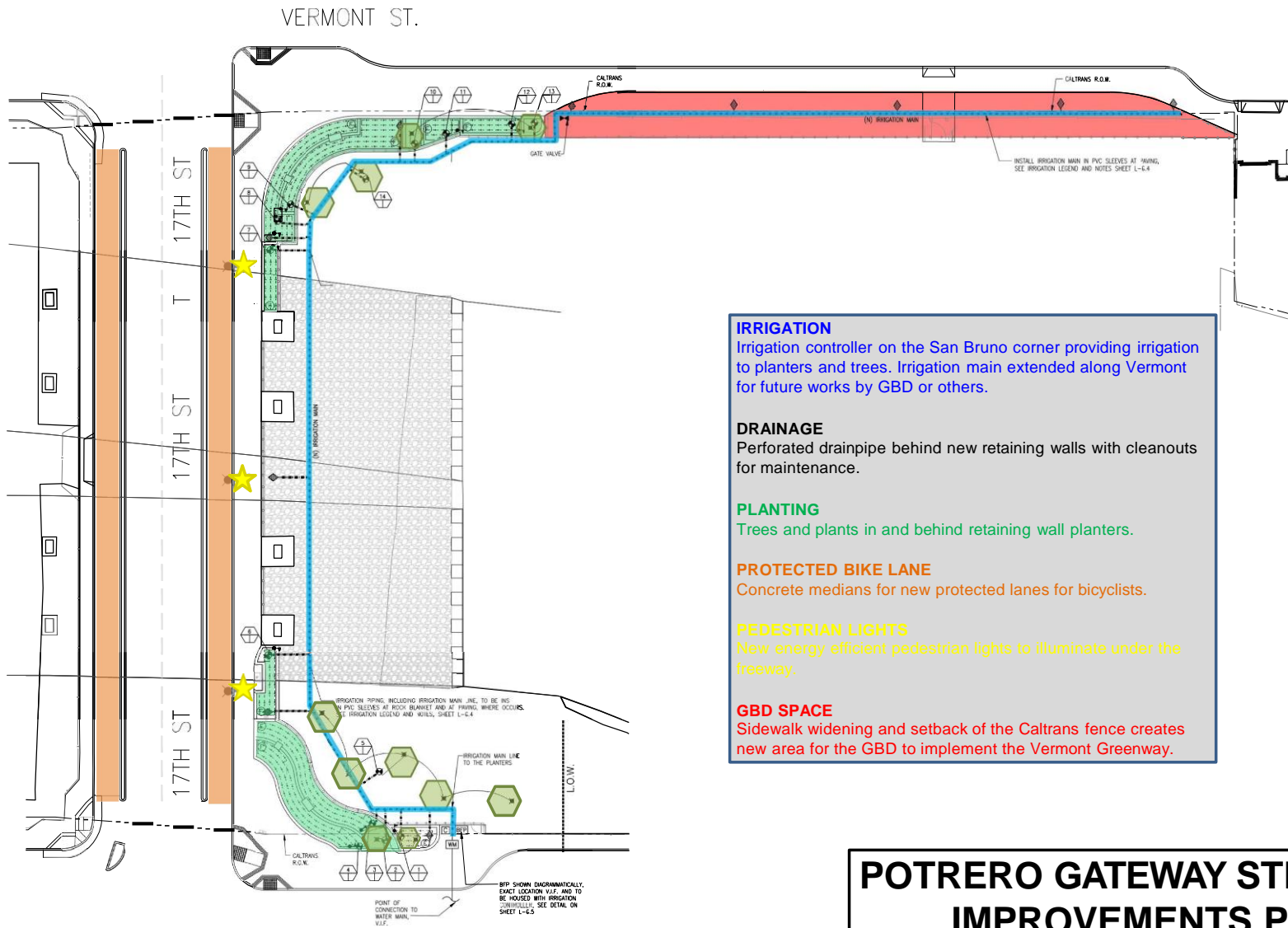
## The Phase 1 Project components are:

- Corner Bulbouts with retaining walls and San Francisco native planting
- Safe Bike Lane with parking removal on 17<sup>th</sup> St.
- Enlarged Sidewalk on 17<sup>th</sup> St.
- Public Art on 17<sup>th</sup> St.
- Fencing and Lighting on 17<sup>th</sup> St and Vermont (with CC funding)
- Removal of Vermont 400 block west traffic lane and addition of 6' sidewalk
- Rock Blanket under the freeway bridge (with CC funding)

## Additional components not in PW Phase 1

- Native Habitat Demonstration Garden – the Eco-Patch on Vermont hillside
- Vermont Street West Lane Greening – A GBD-CCG Project
- San Bruno Avenue TBD





**IRRIGATION**  
 Irrigation controller on the San Bruno corner providing irrigation to planters and trees. Irrigation main extended along Vermont for future works by GBD or others.

**DRAINAGE**  
 Perforated drainpipe behind new retaining walls with cleanouts for maintenance.

**PLANTING**  
 Trees and plants in and behind retaining wall planters.

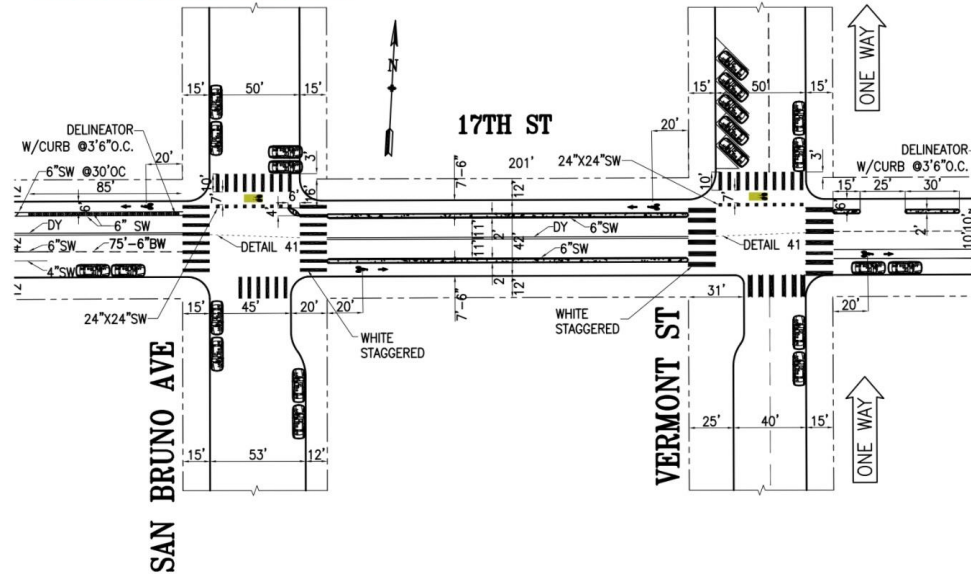
**PROTECTED BIKE LANE**  
 Concrete medians for new protected lanes for bicyclists.

**PEDESTRIAN LIGHTS**  
 New energy efficient pedestrian lights to illuminate under the freeway.

**GBD SPACE**  
 Sidewalk widening and setback of the Caltrans fence creates new area for the GBD to implement the Vermont Greenway.

**POTRERO GATEWAY STREETSCAPE IMPROVEMENTS PROJECT**

PROPOSED DESIGN - ZOOMED IN



Parking removed on 17<sup>th</sup>

Diagonal parking on Vermont 300 block

New bike medians

Bike safety features added



17th Street

BIKE  
LANE  
6'

BIKE  
LANE  
6'

SIDEWALK  
9'

Made with Streetmix

## SFAC Public Art Project



Public Works Drawing of the Vermont St bulbout

Using what was learned from the Eco-Patch, the landscape will consist of SF Native Plants.

FutureForms project was chosen using the SFAC process.

The design will continue to be updated in the spring 2022

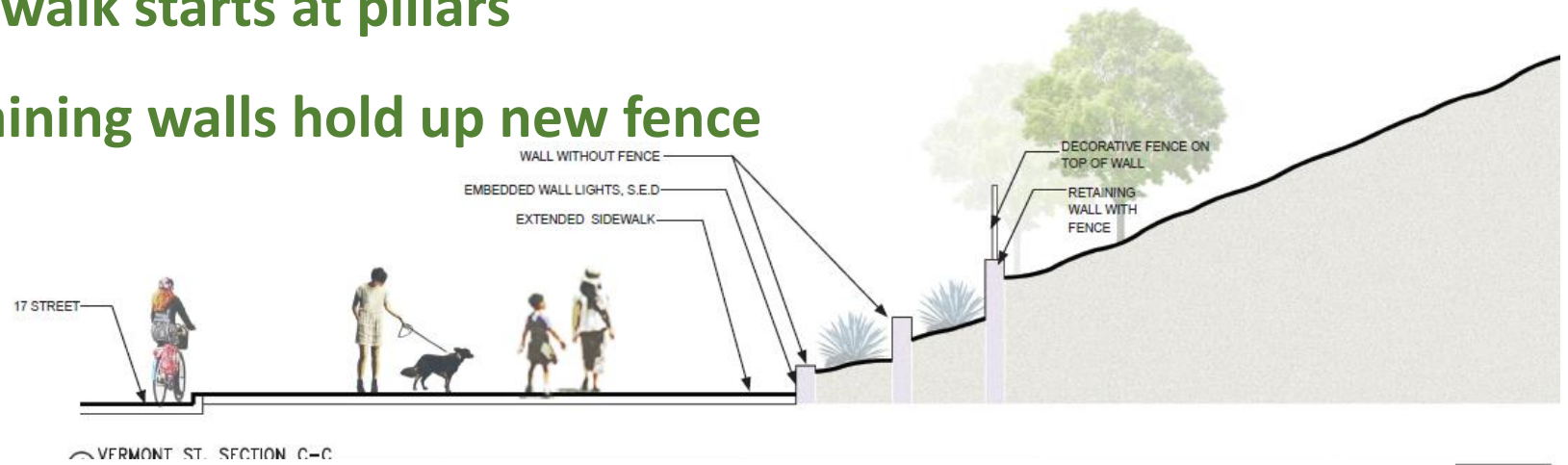
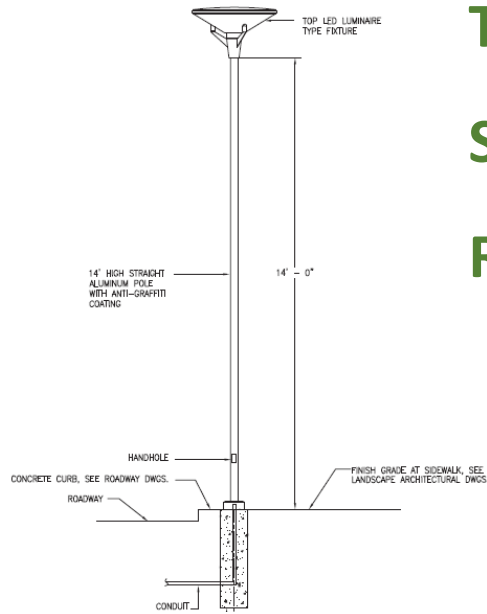




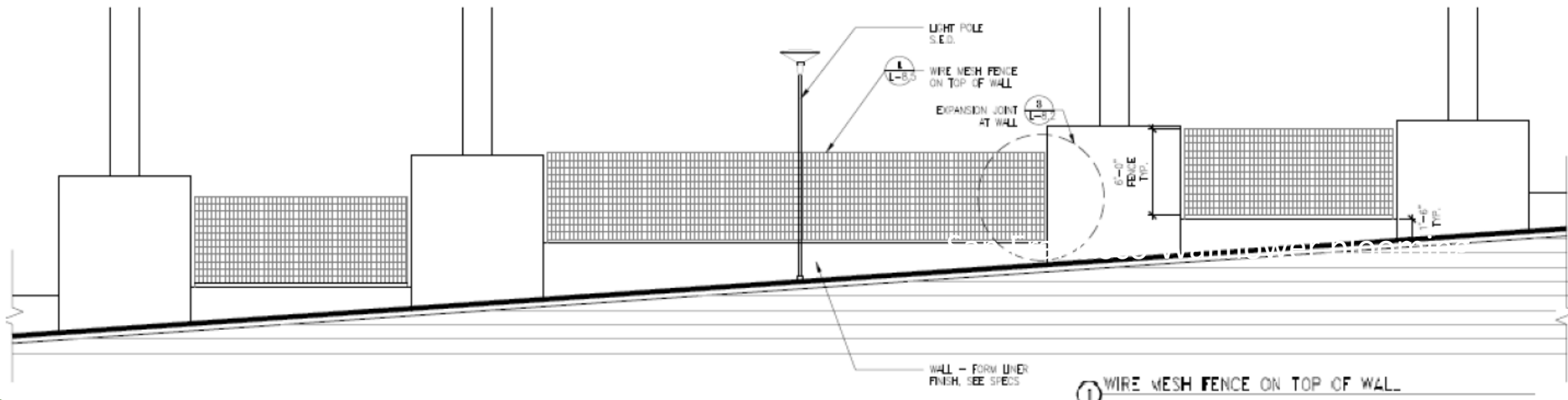
# Three New Sidewalk Lights

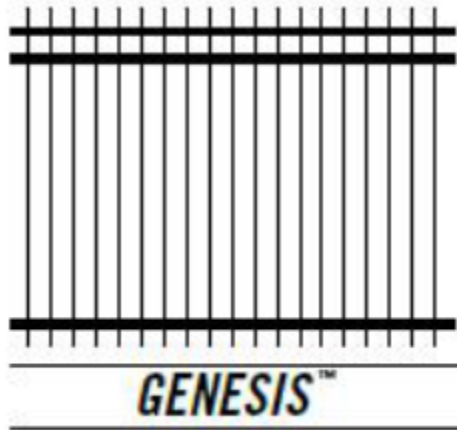
Sidewalk starts at pillars

Retaining walls hold up new fence



## Wire Mesh Panel Fence from the Public Works 95% Design





**Metal Fencing**

**Rock Blanket under freeway**

**Caltrans Bridge Paint Project**

**CA Native Habitat behind walls**





## Eco-Patch Test Garden



January 19 Work-Party – Mulched and Weeded

Open Garden Events and Work-Parties are anticipated during winter and spring

