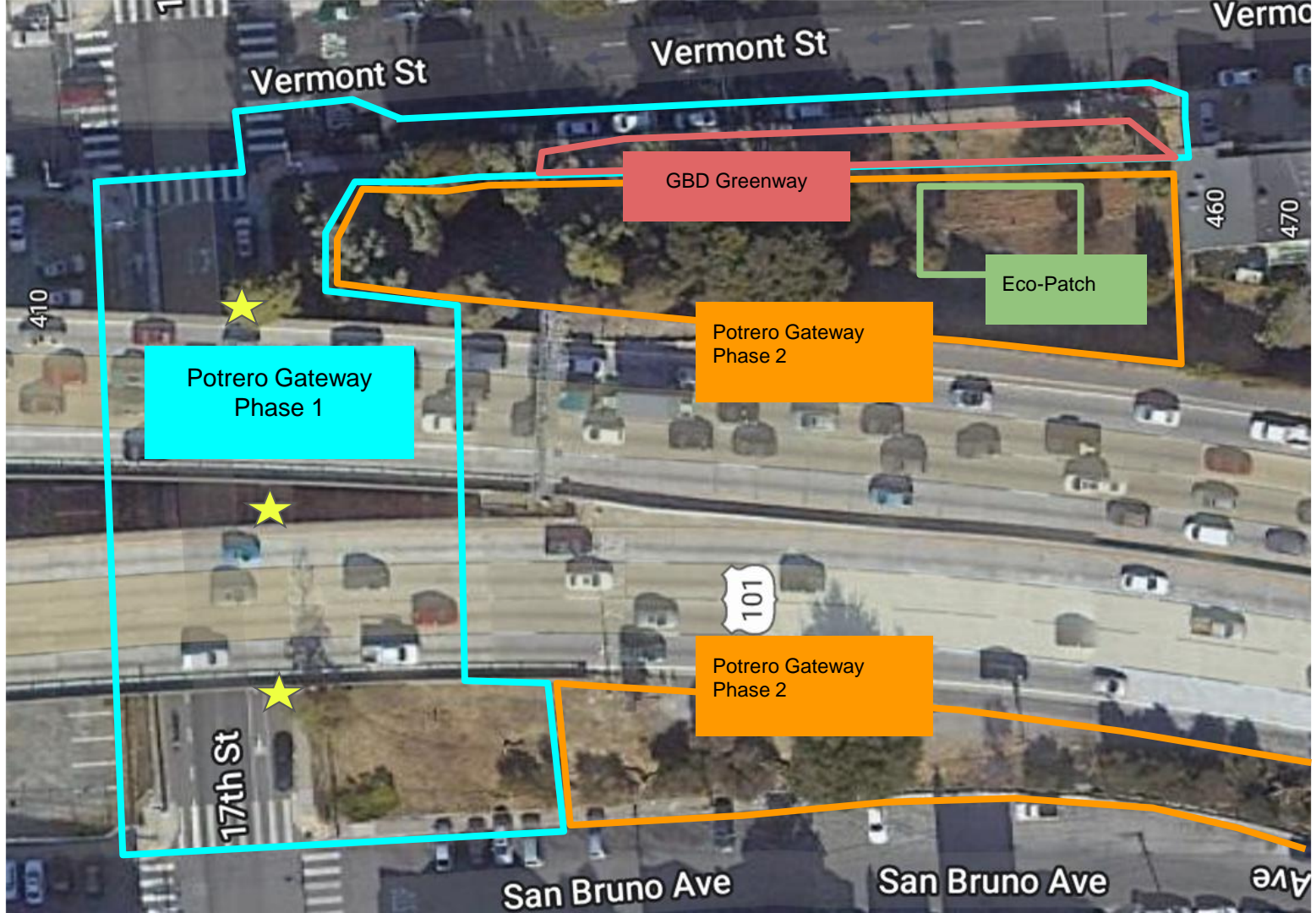


# Potrero Gateway Project



June 15, 2022





Vermont St

Vermont St

Vermo

410

460

470

Potrero Gateway  
Phase 1

GBD Greenway

Eco-Patch

Potrero Gateway  
Phase 2

101

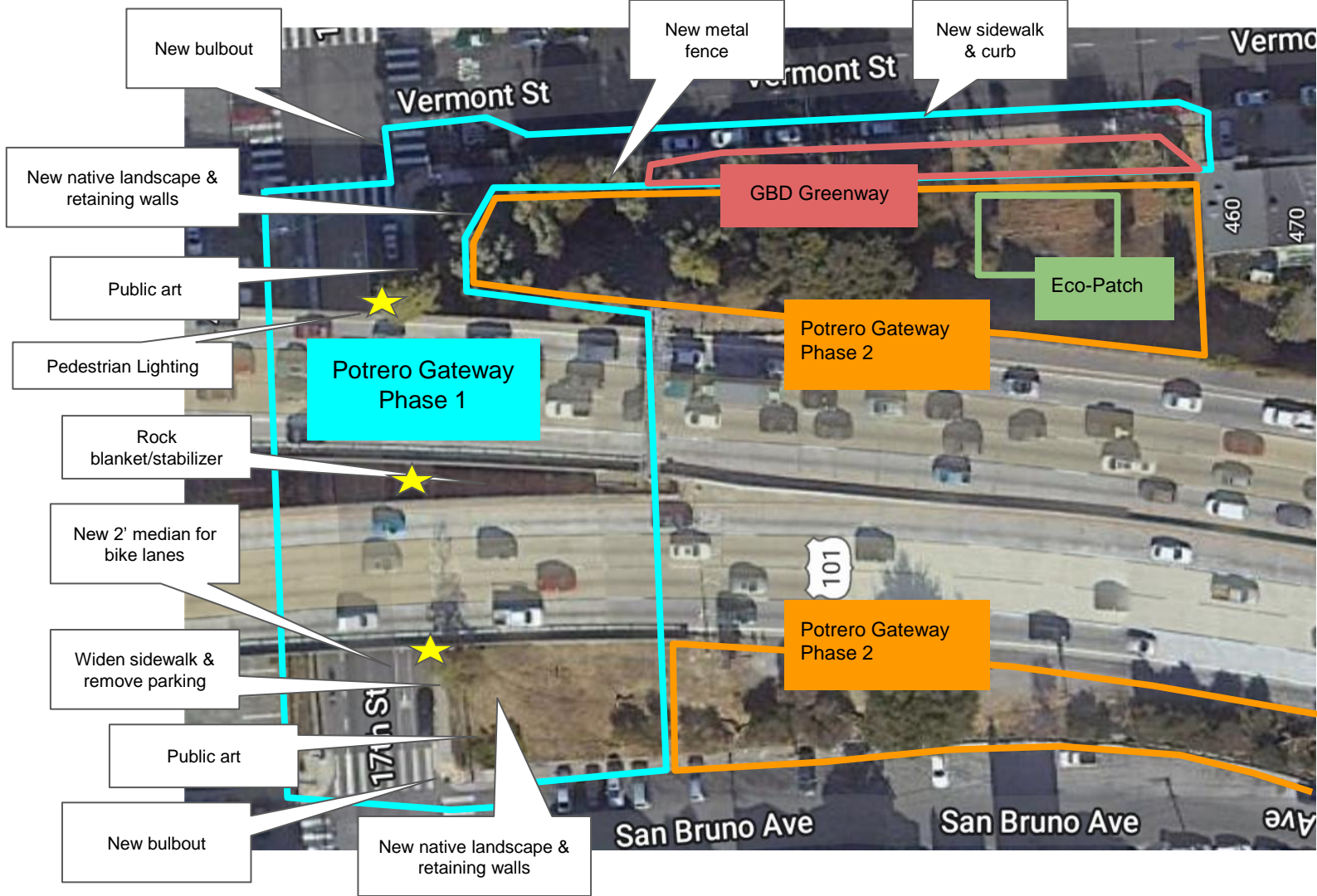
Potrero Gateway  
Phase 2

17th St

San Bruno Ave

San Bruno Ave

Ave



New bulbout

New metal fence

New sidewalk & curb

New native landscape & retaining walls

Public art

Pedestrian Lighting

Potrero Gateway Phase 1

Rock blanket/stabilizer

New 2' median for bike lanes

Widen sidewalk & remove parking

Public art

New bulbout

New native landscape & retaining walls

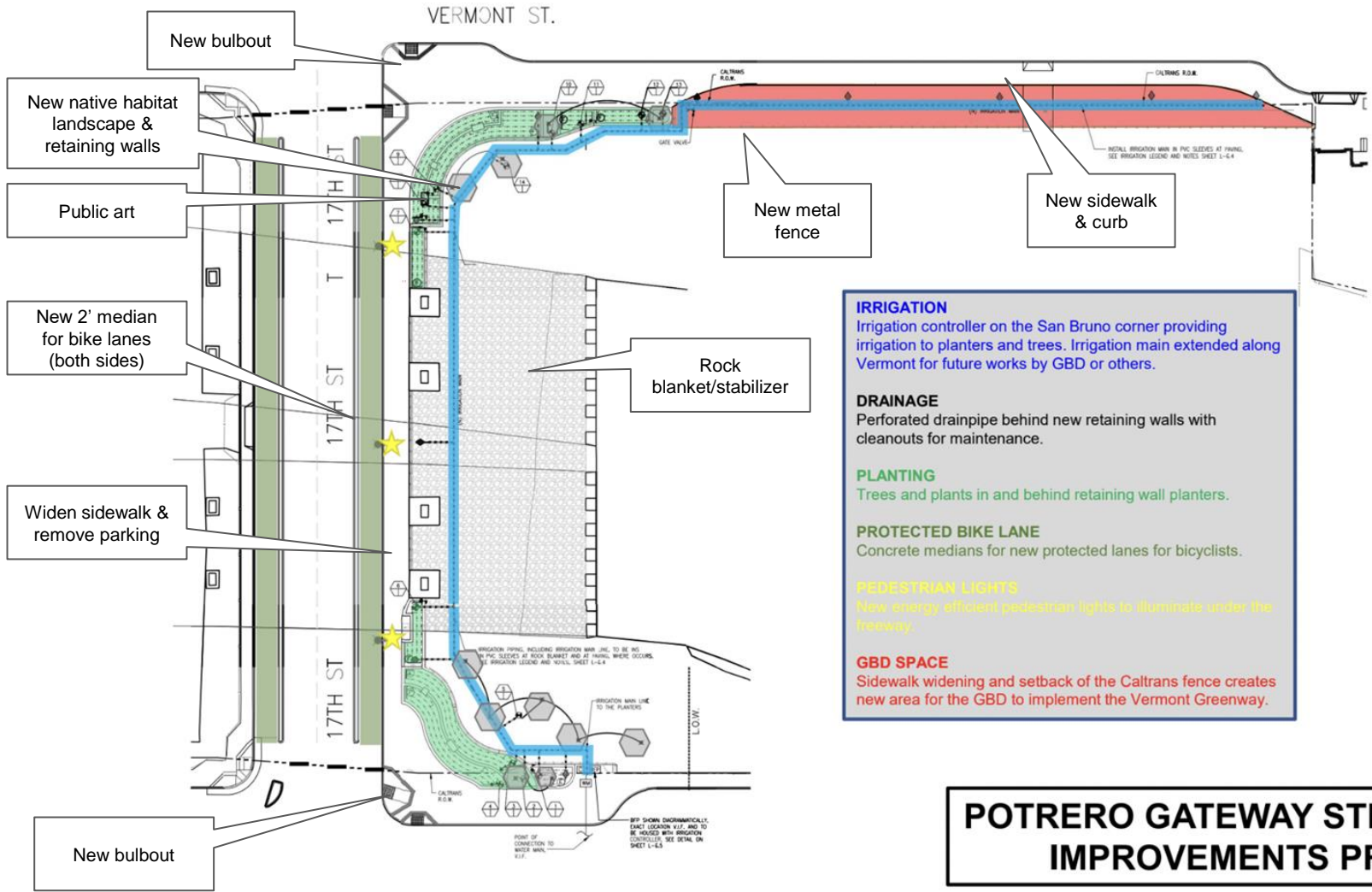
GBD Greenway

Potrero Gateway Phase 2

Eco-Patch

Potrero Gateway Phase 2





**IRRIGATION**  
 Irrigation controller on the San Bruno corner providing irrigation to planters and trees. Irrigation main extended along Vermont for future works by GBD or others.

**DRAINAGE**  
 Perforated drainpipe behind new retaining walls with cleanouts for maintenance.

**PLANTING**  
 Trees and plants in and behind retaining wall planters.

**PROTECTED BIKE LANE**  
 Concrete medians for new protected lanes for bicyclists.

**PEDESTRIAN LIGHTS**  
 New energy efficient pedestrian lights to illuminate under the freeway.

**GBD SPACE**  
 Sidewalk widening and setback of the Caltrans fence creates new area for the GBD to implement the Vermont Greenway.



**POTRERO GATEWAY STREETSCAPE IMPROVEMENTS PROJECT**